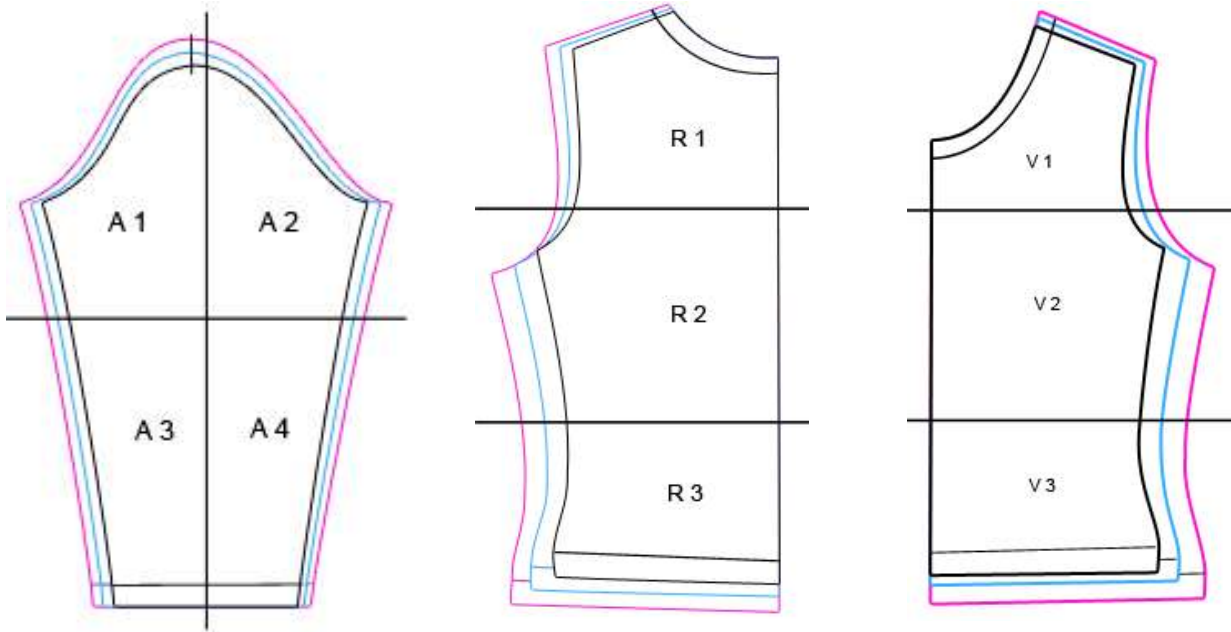


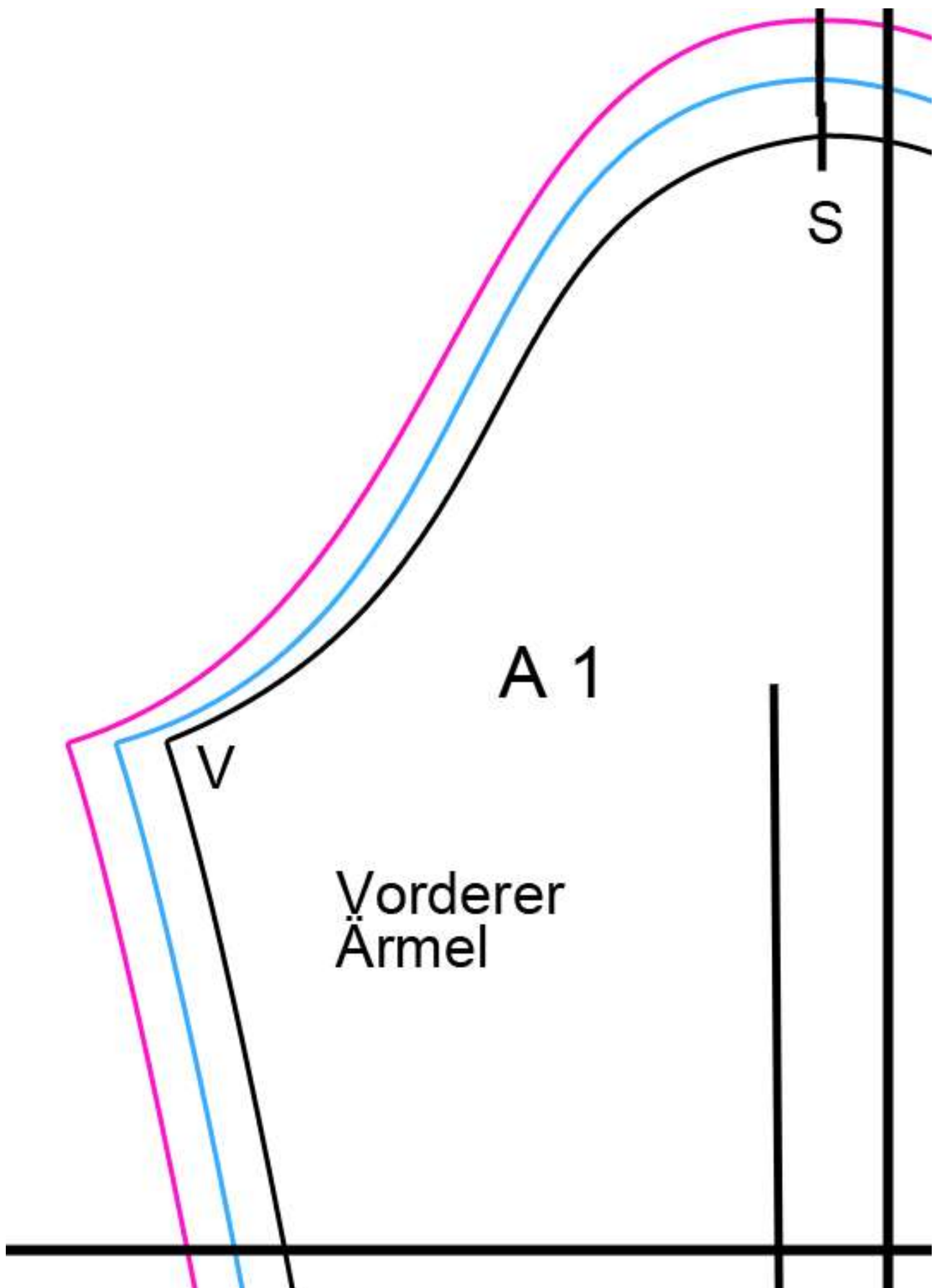
Verflixt und Zugenäht

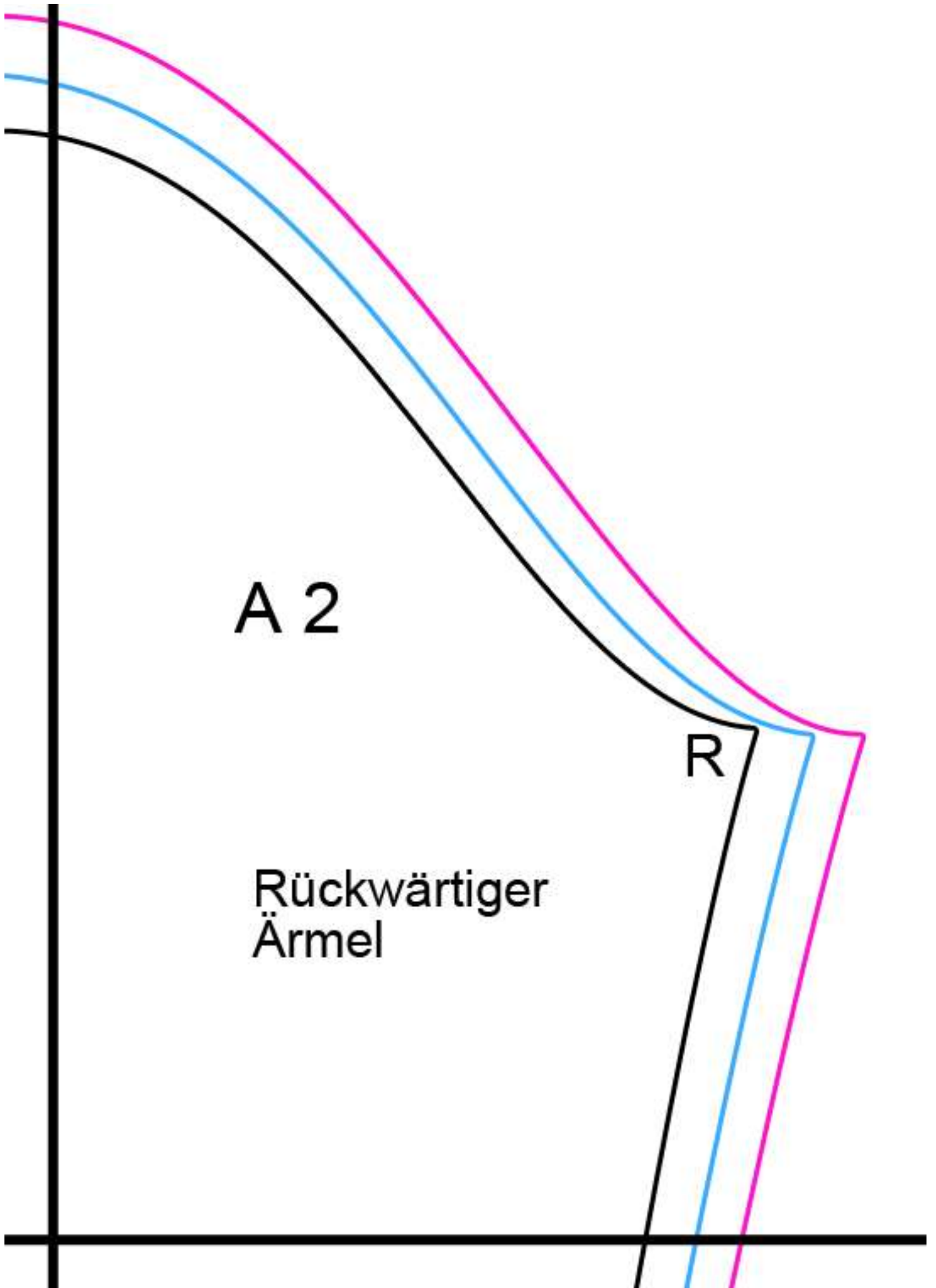
www.schneidern-naehen.de

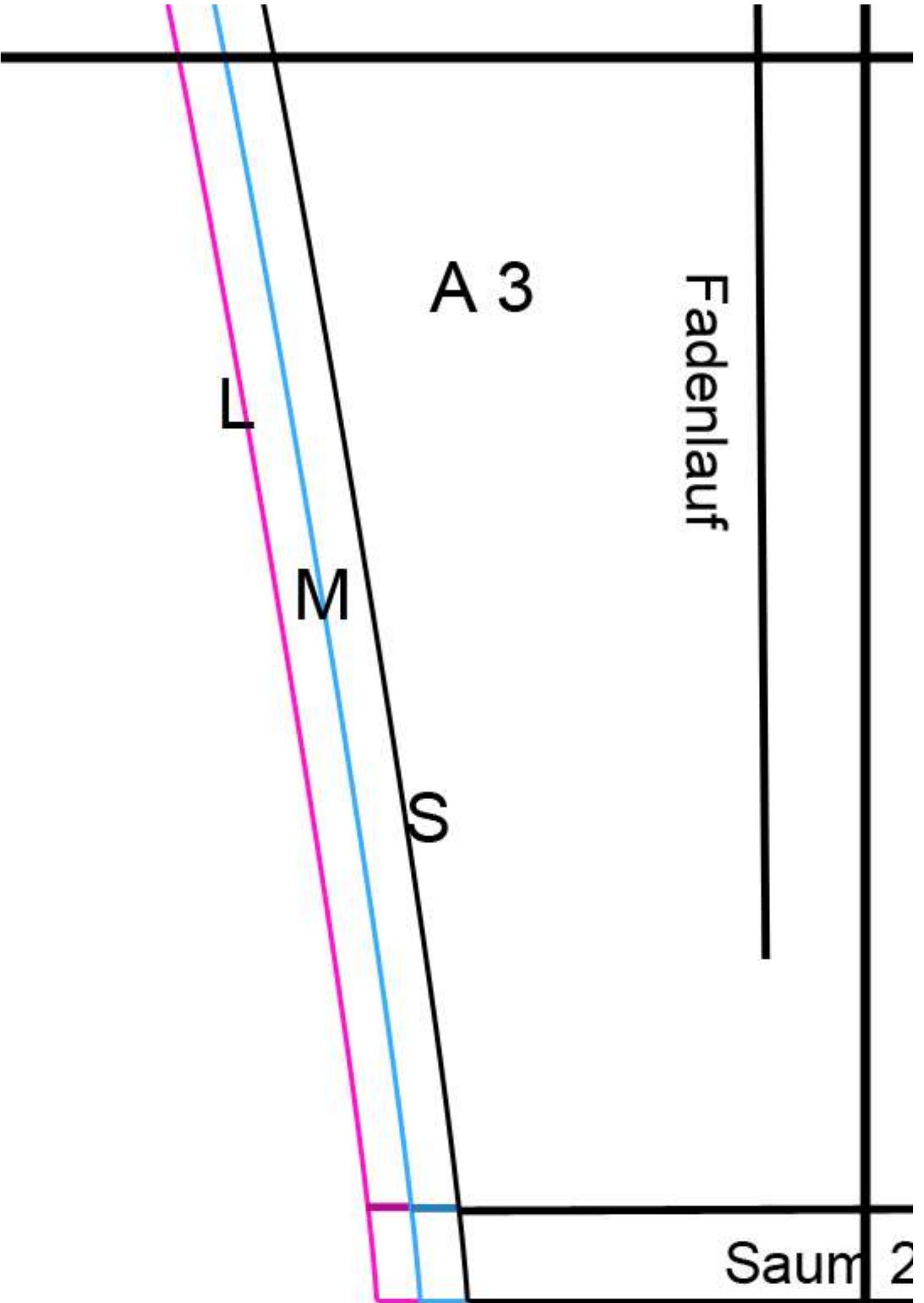
Schnittmuster Basic Shirt für Damen

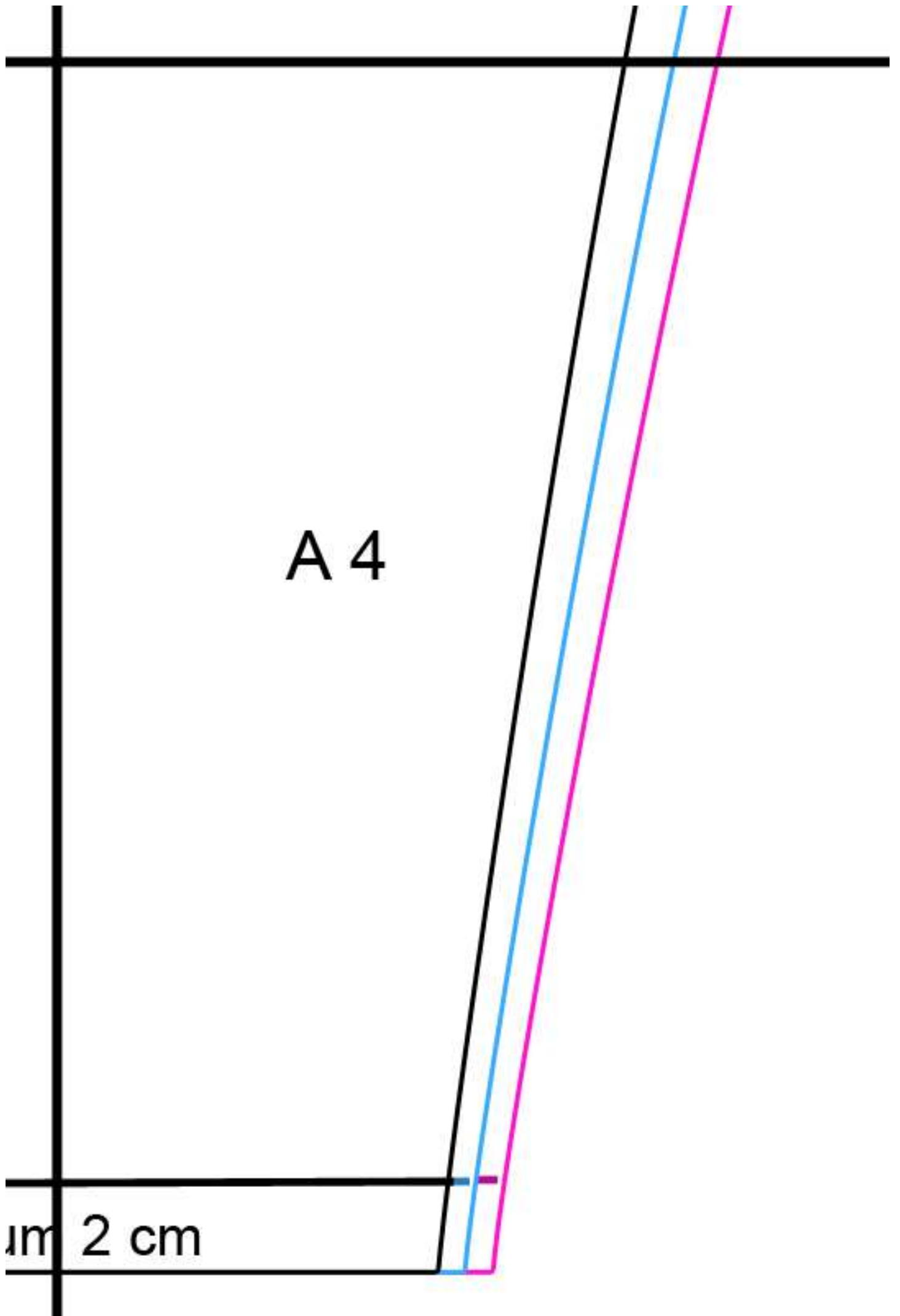
Drucken Sie das Schnittmuster aus. Kleben Sie die Teile an den Linien zusammen. Die Linien treffen aufeinander.

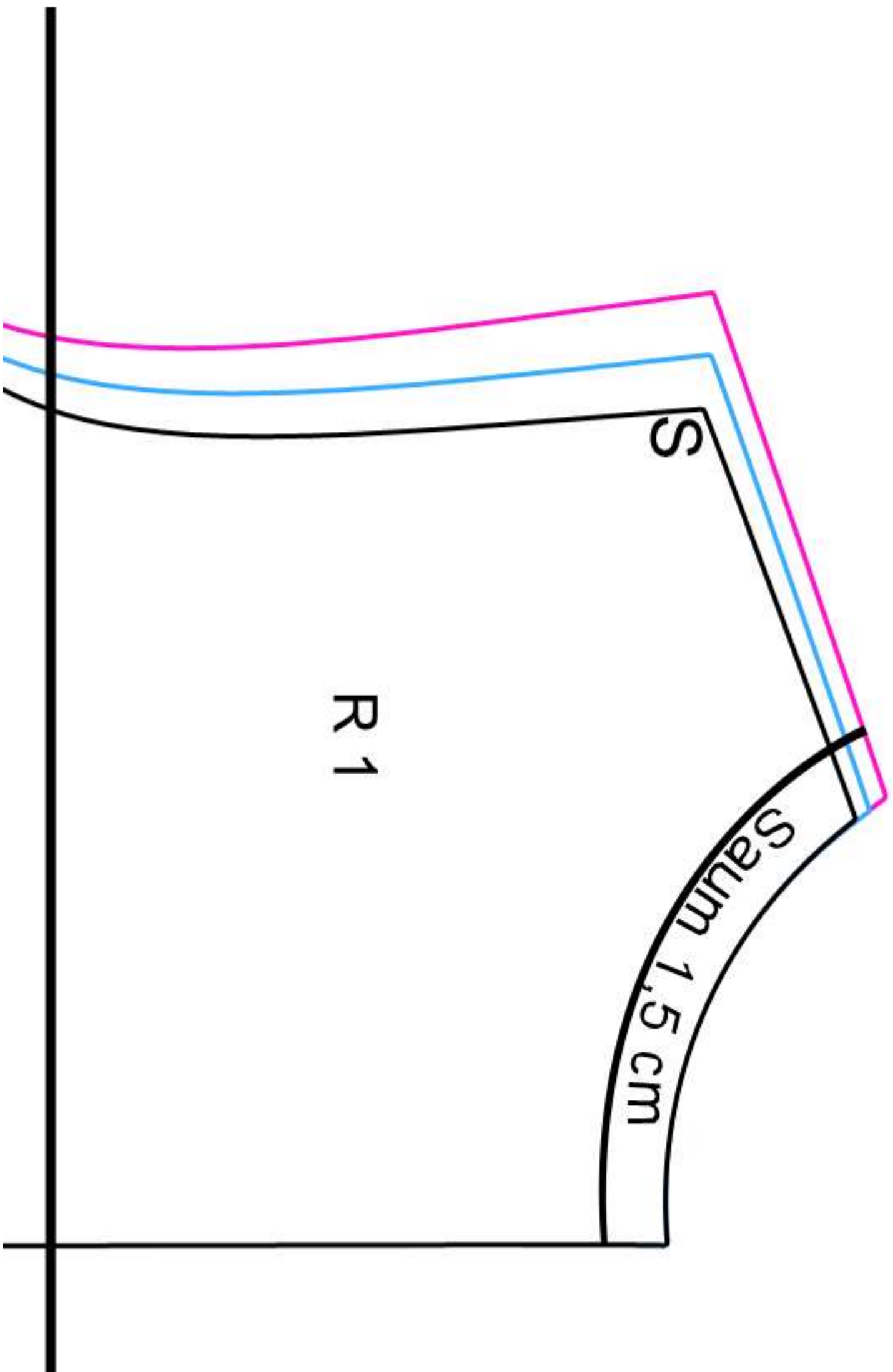








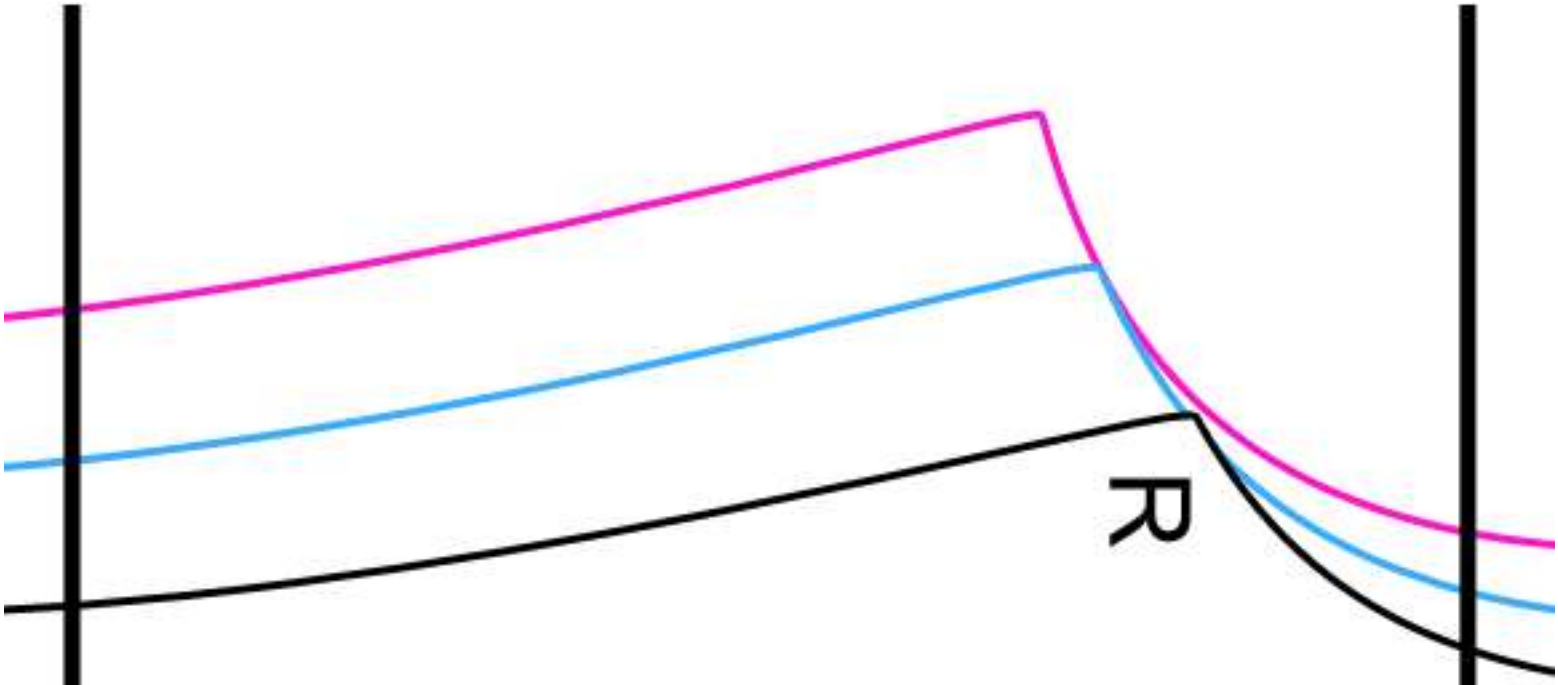




Rückwärtige Mitte Stoffbruch

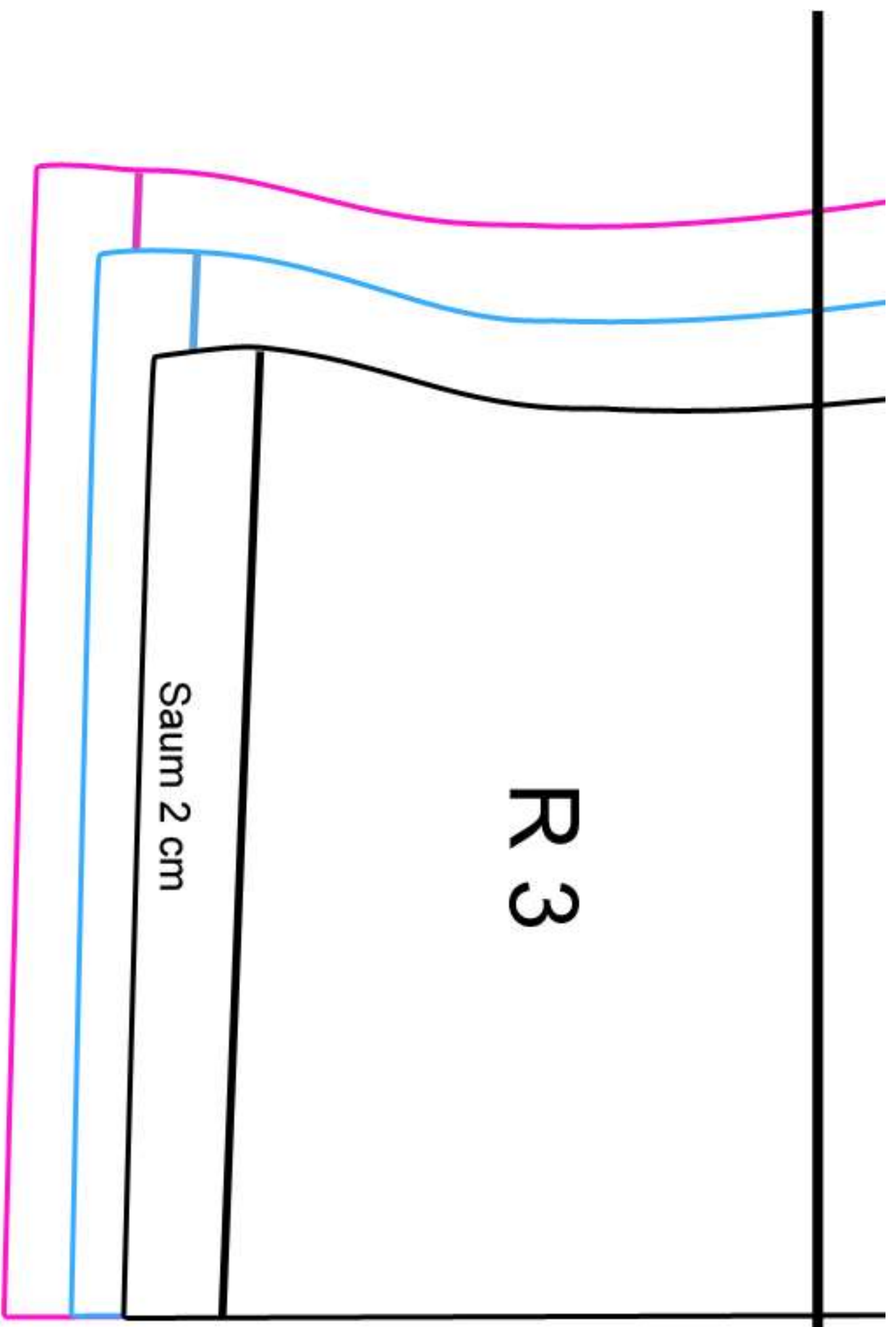
R 2

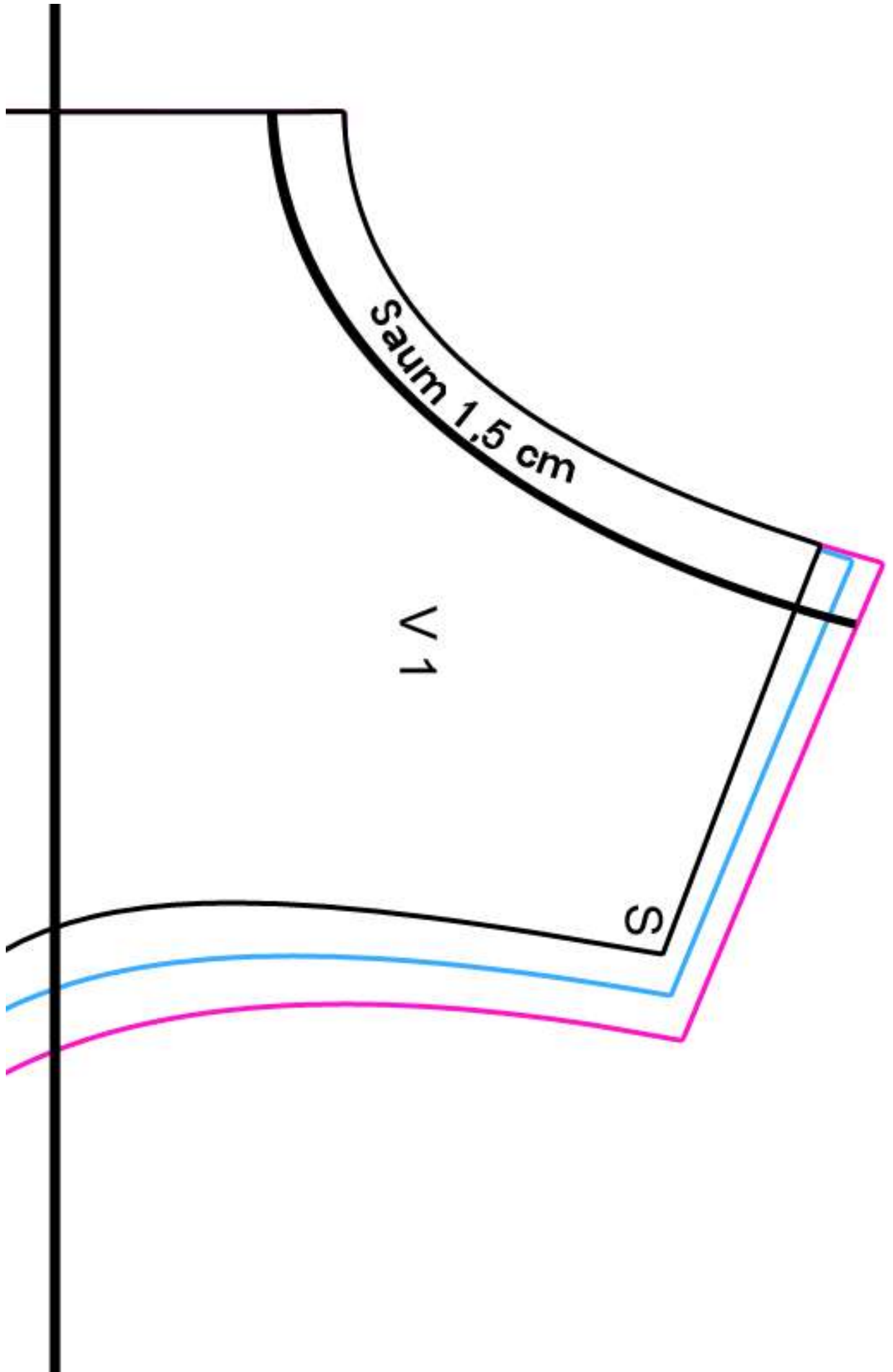
R



R 3

Saum 2 cm





Vordere Mitte Stoffbruch

V/2

