

# Verflixt und Zugenäht

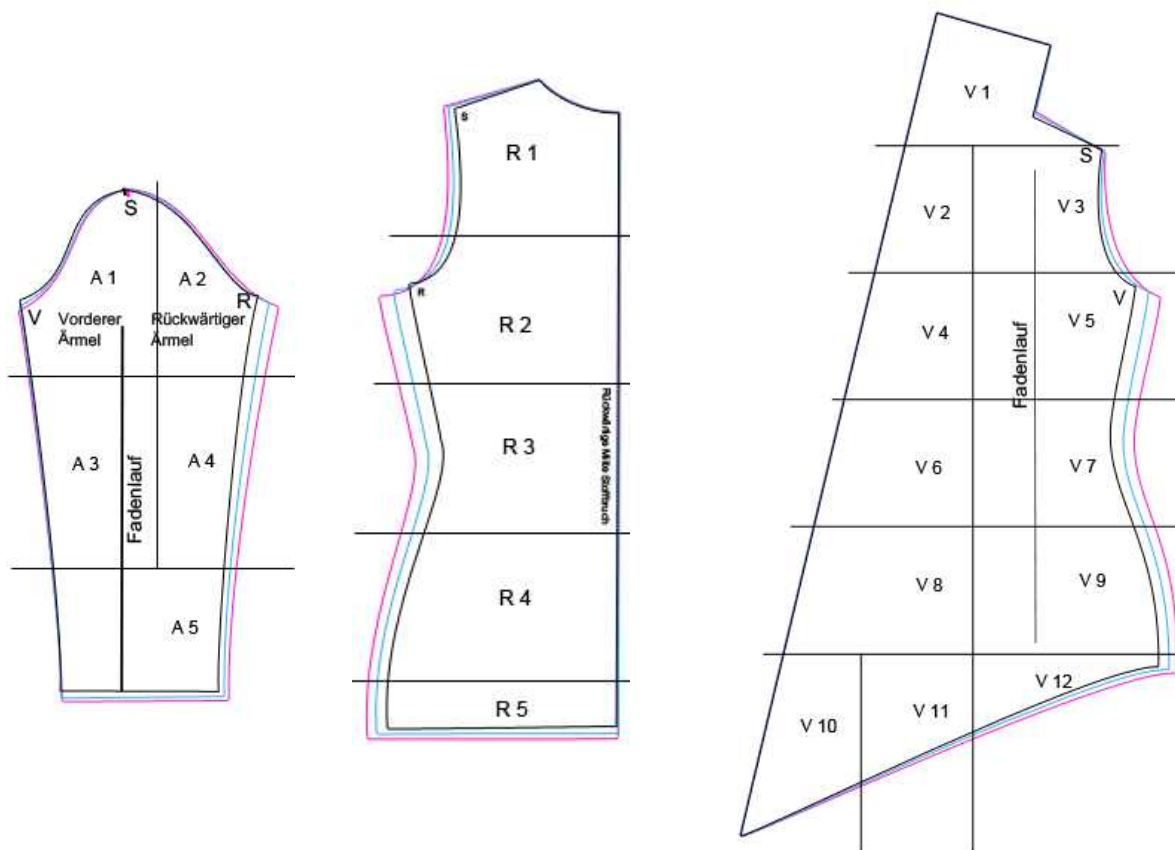
[www.schneidern-naehen.de](http://www.schneidern-naehen.de)

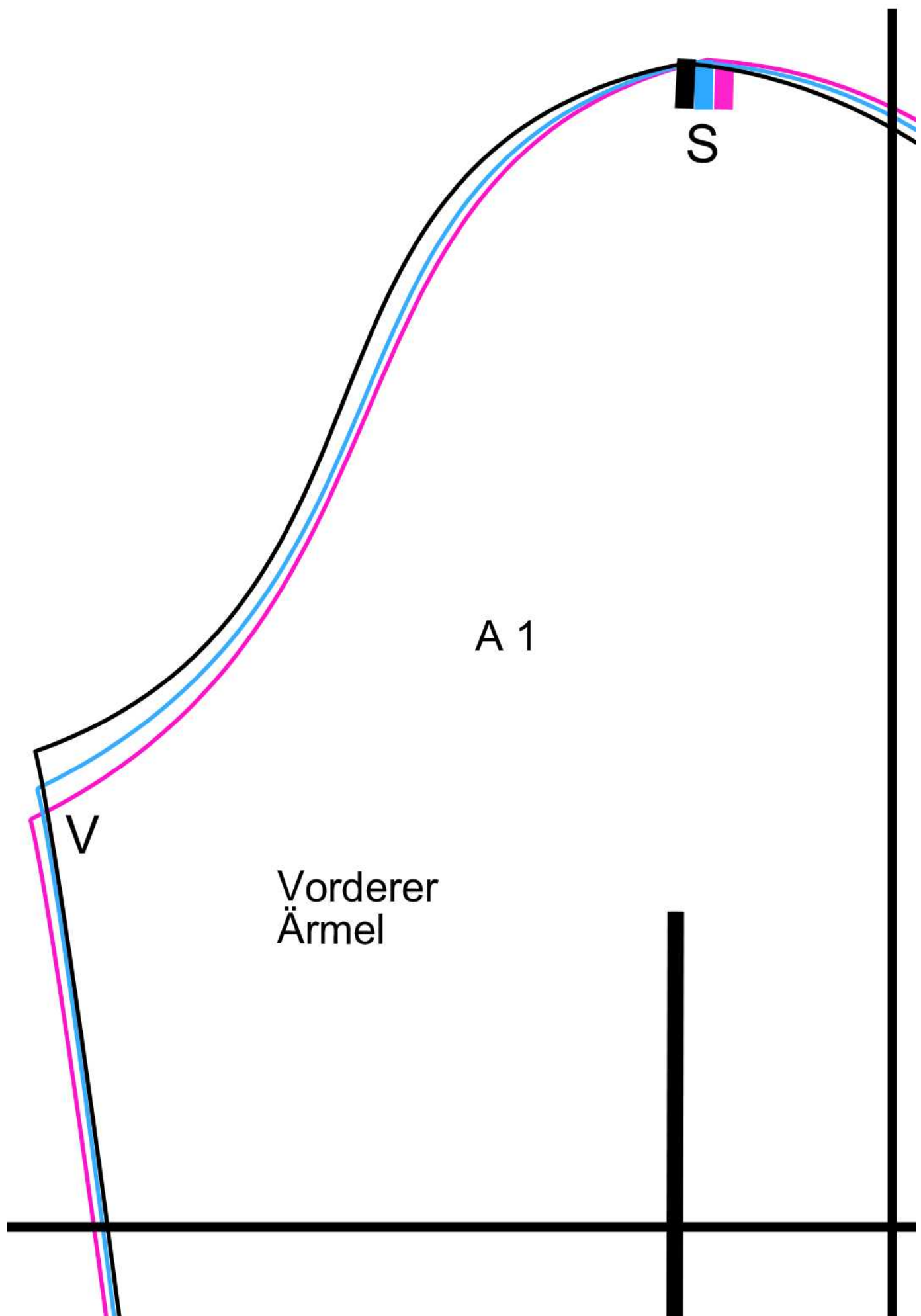
## Schnittmuster – Zipfeljacke

Drucken Sie das Schnittmuster aus. Kleben Sie die Teile an den schwarzen Linien zusammen. Die Linien treffen aufeinander.

- Schwarz = Größe S
- Blau = Größe M
- Pink = Größe L

### Übersicht



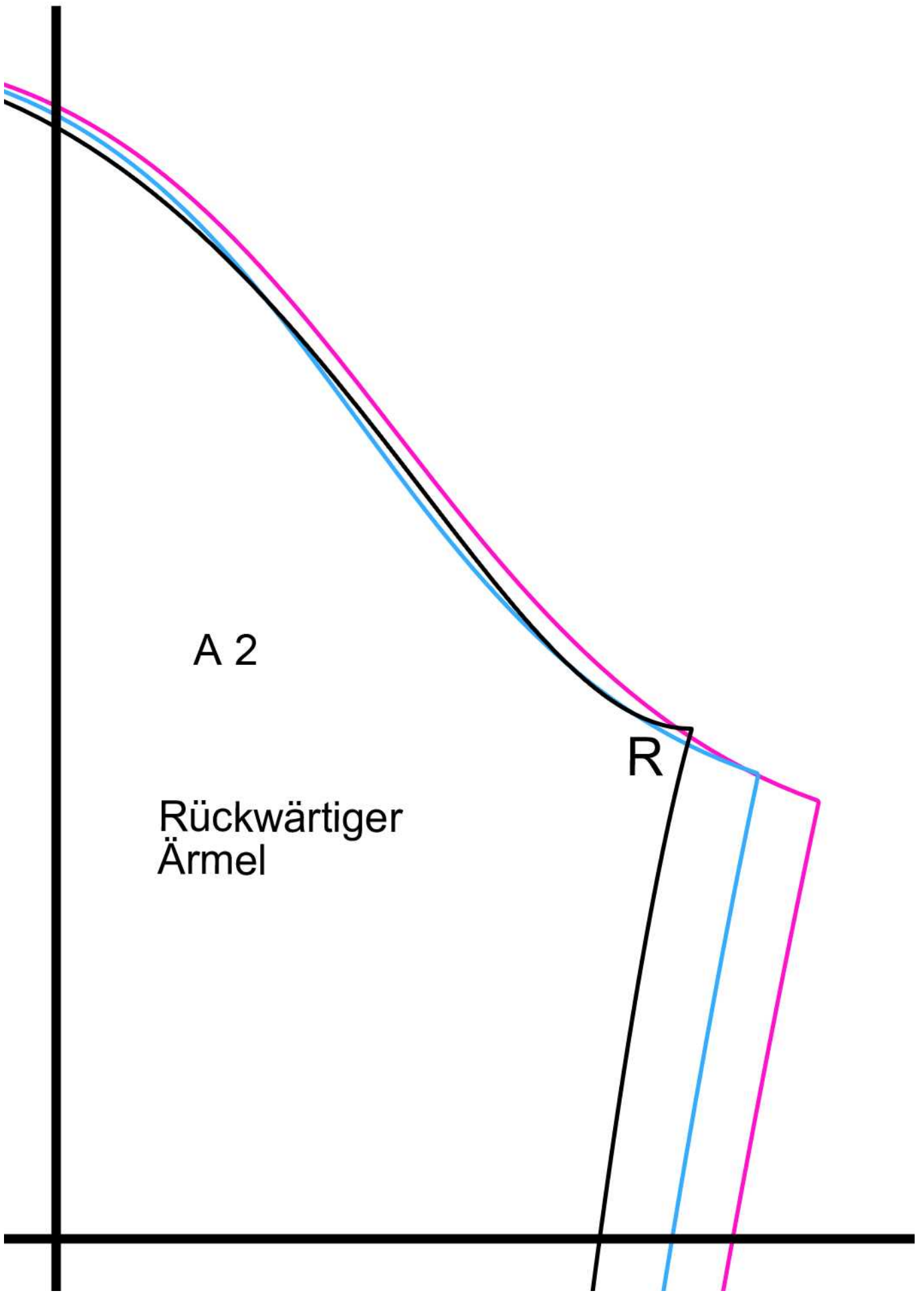


V

Vorderer  
Ärmel

A 1

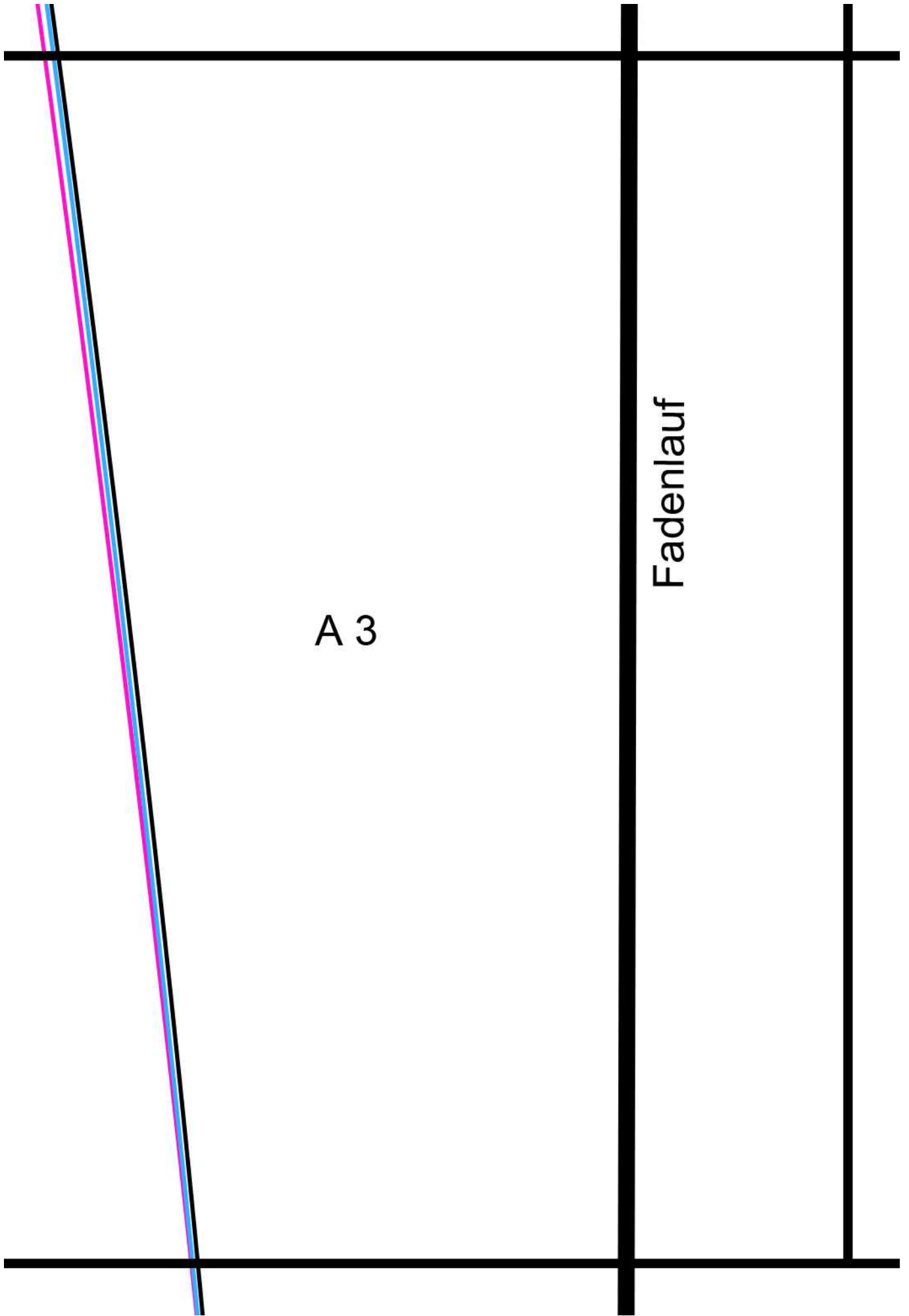
S

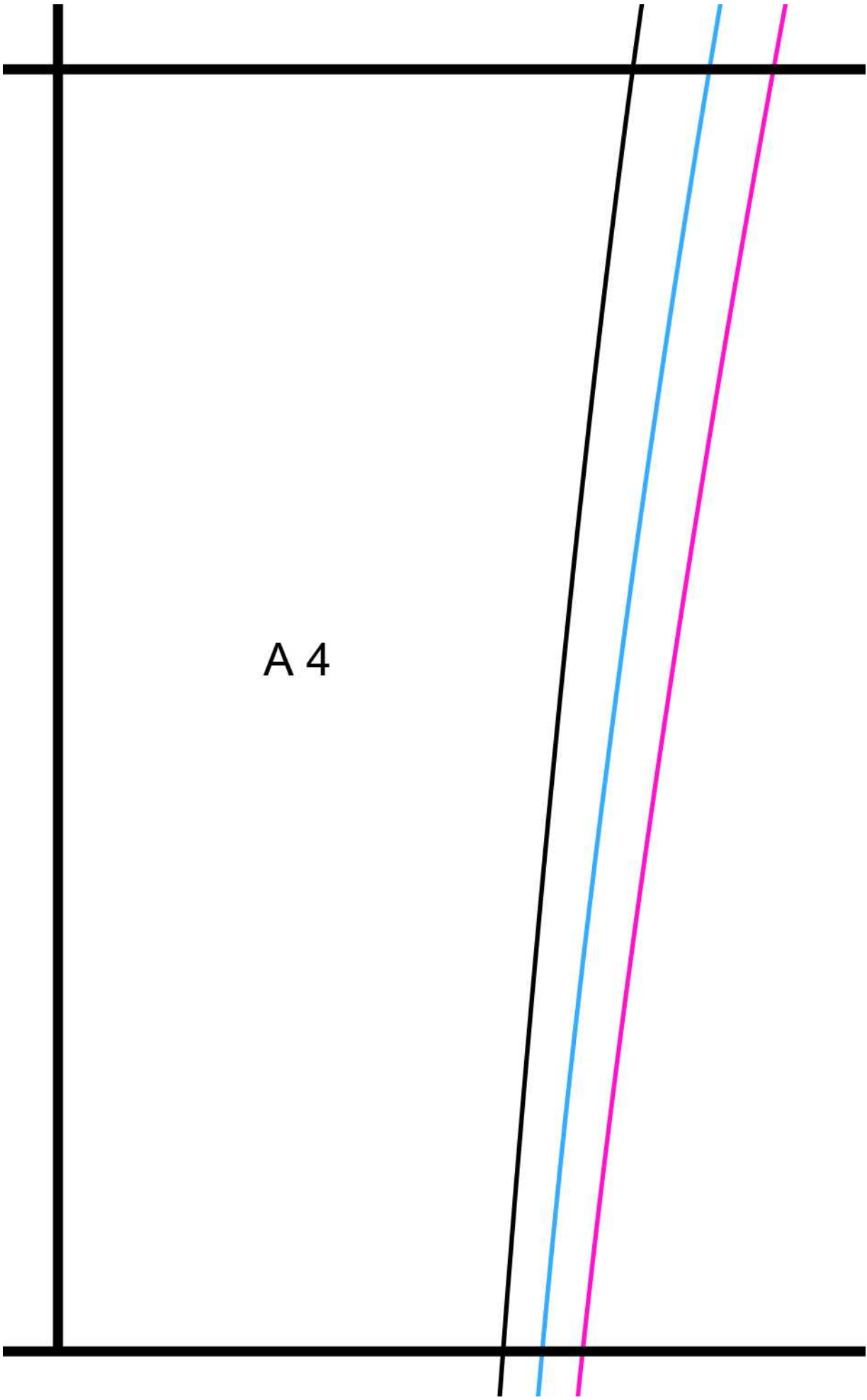


A 2

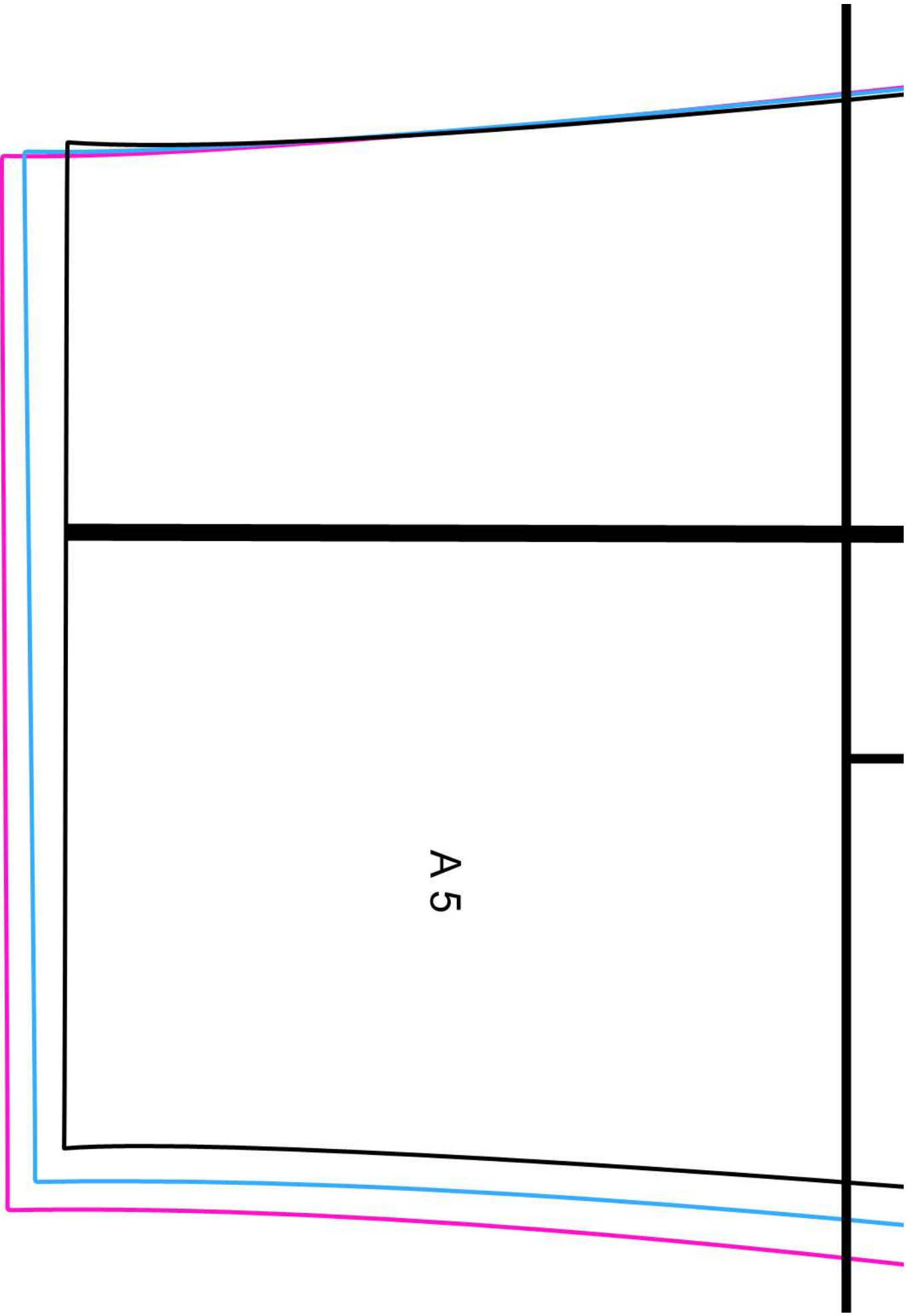
Rückwärtiger  
Ärmel

R

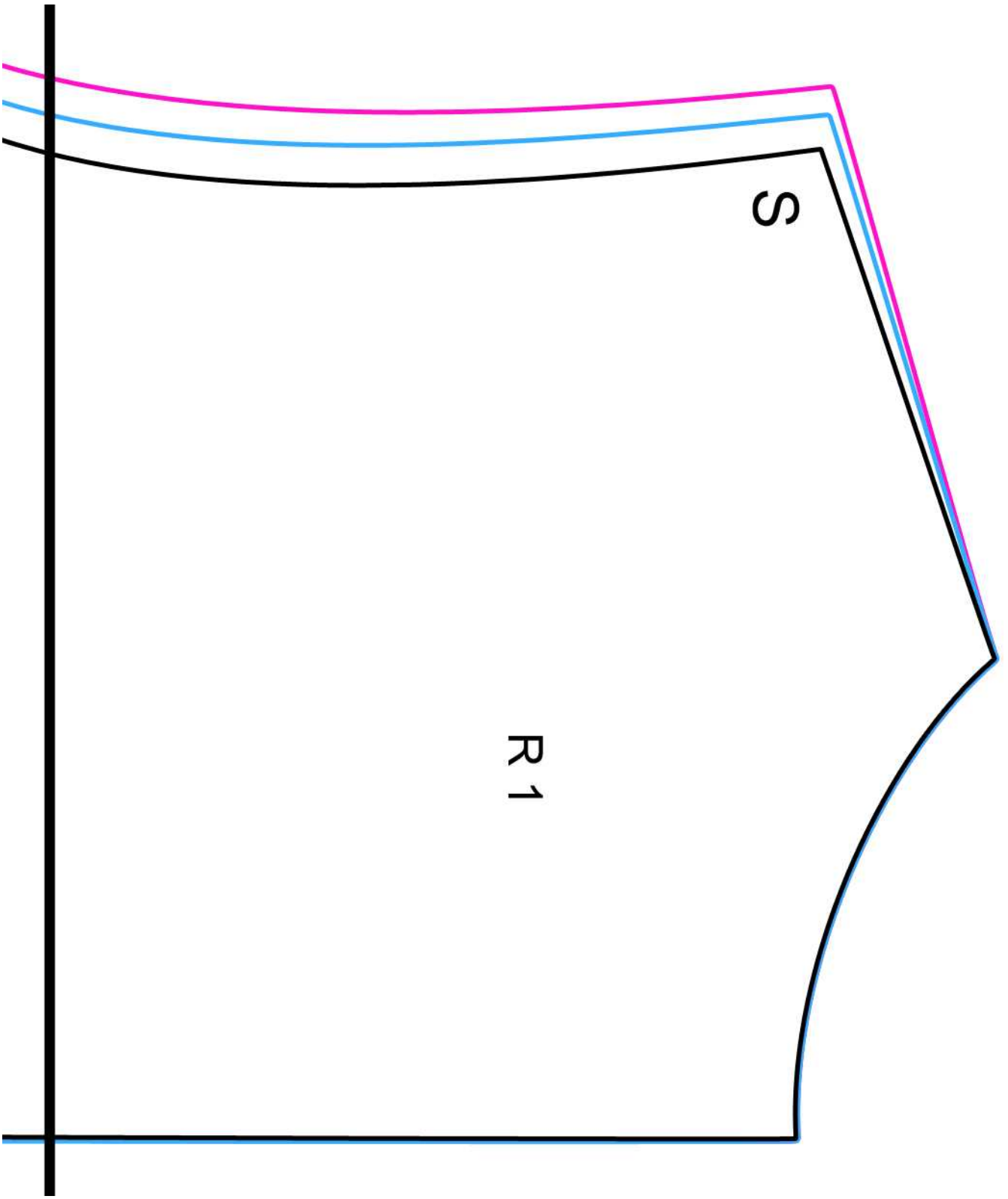


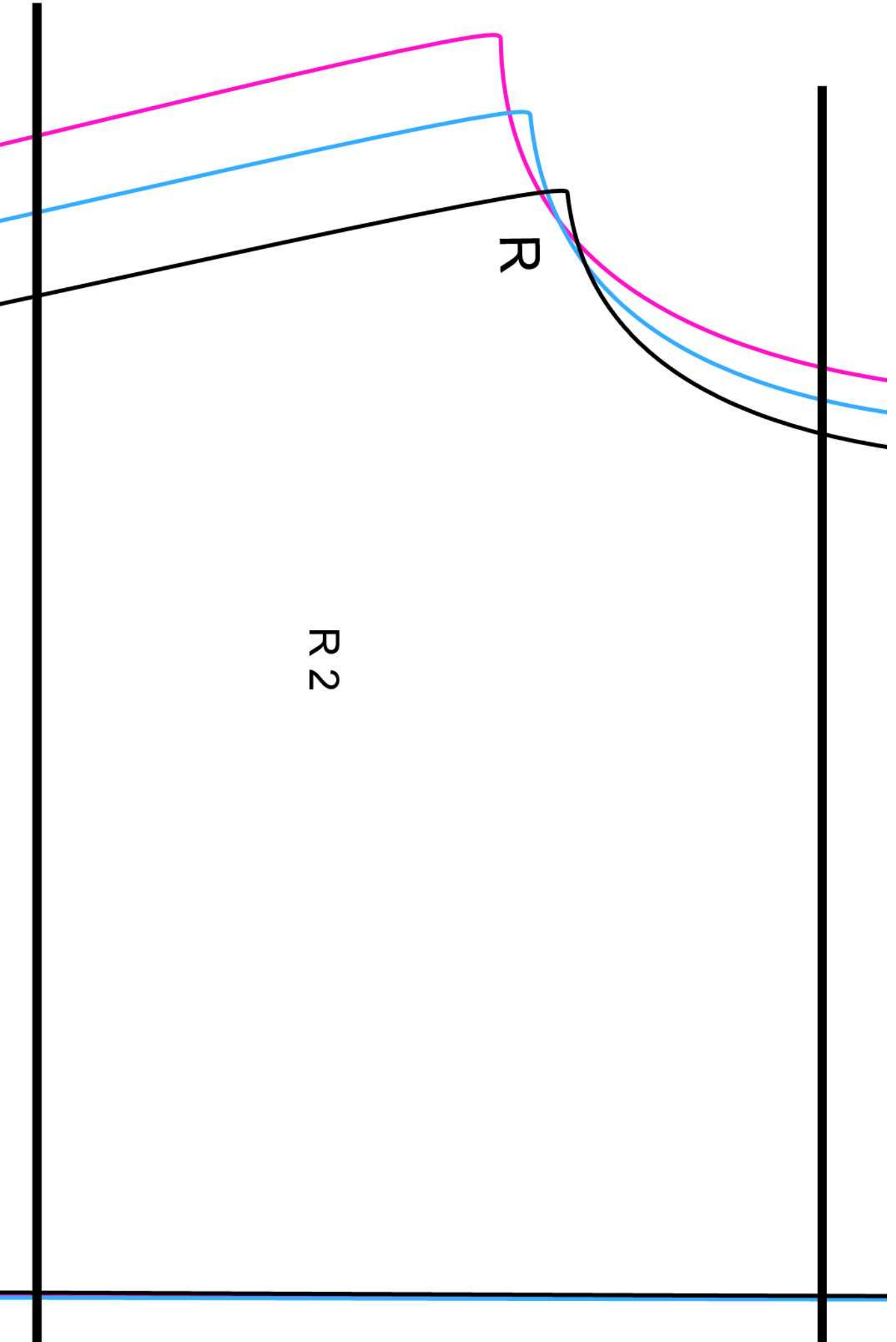


A 4



A 5

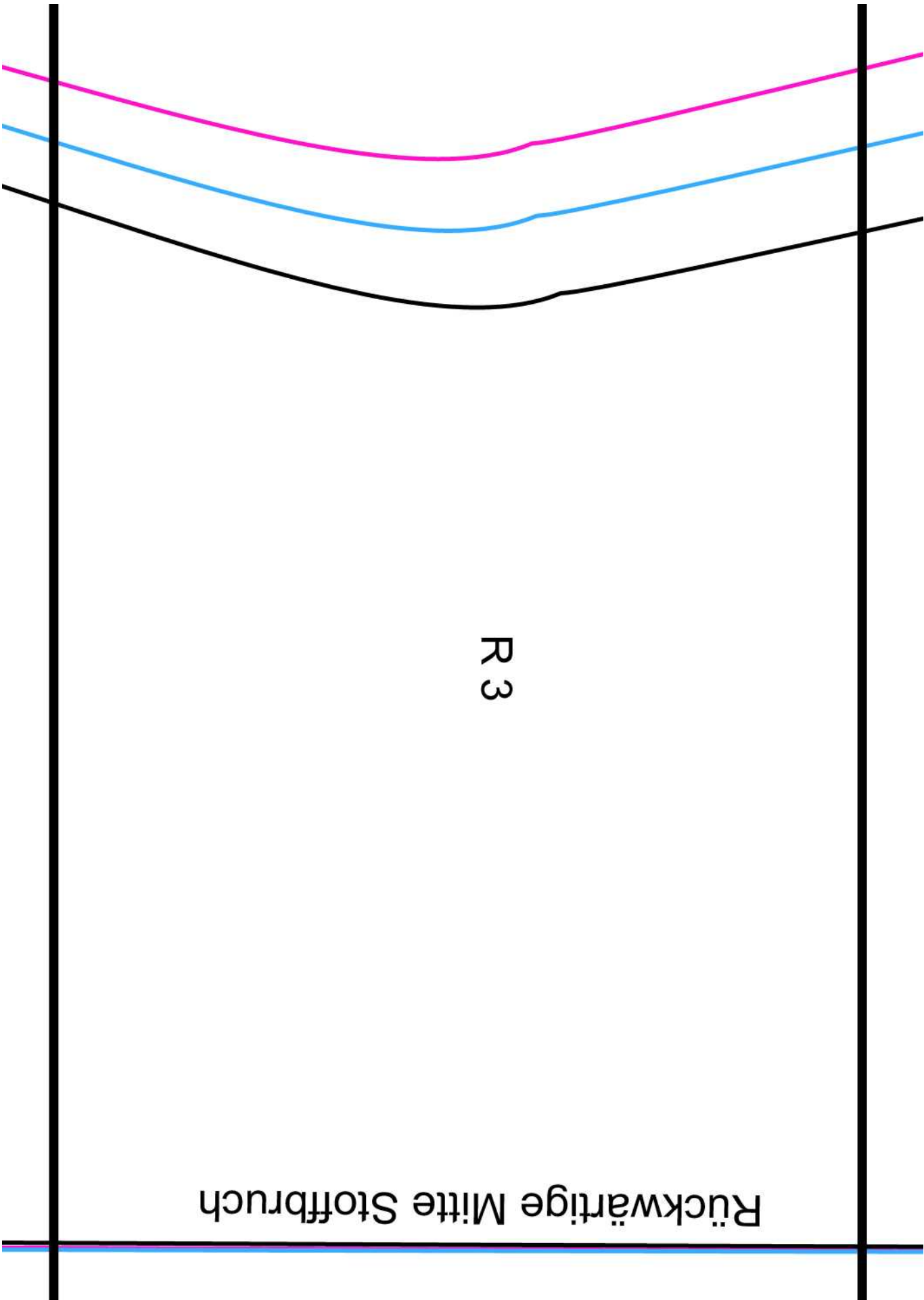


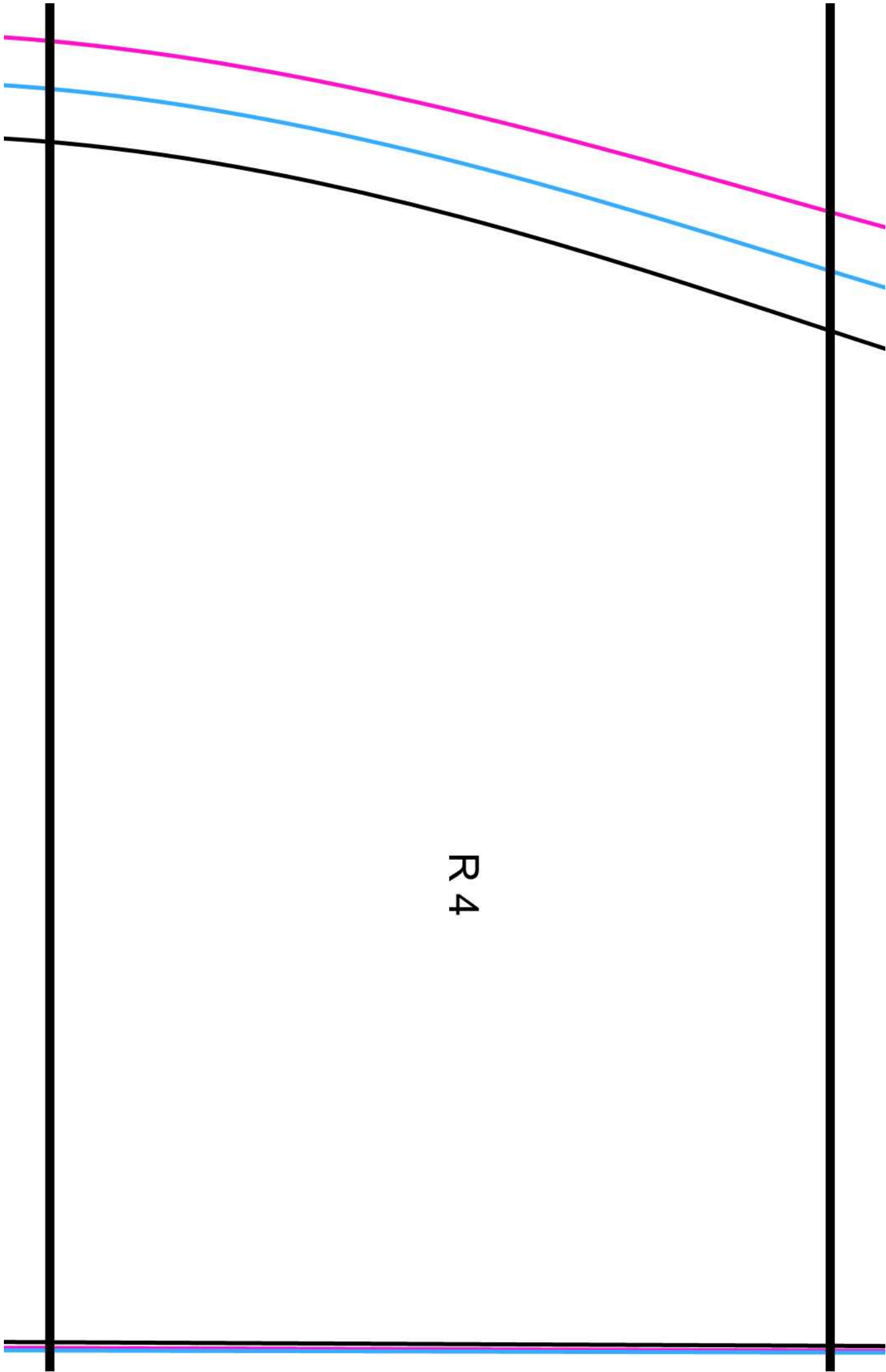




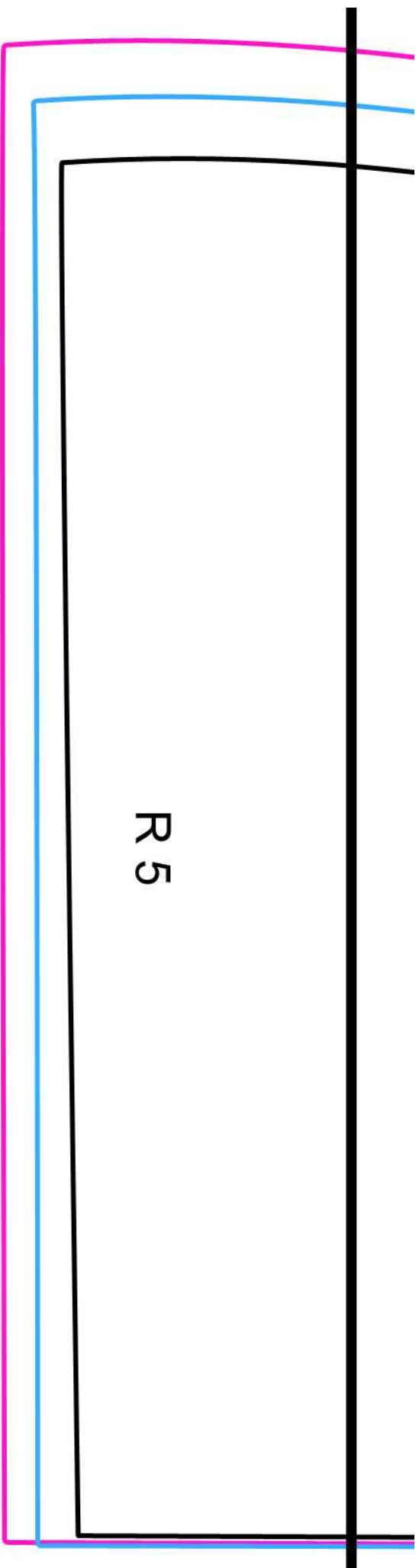
Rückwärtige Mitte Stoffbruch

R 3

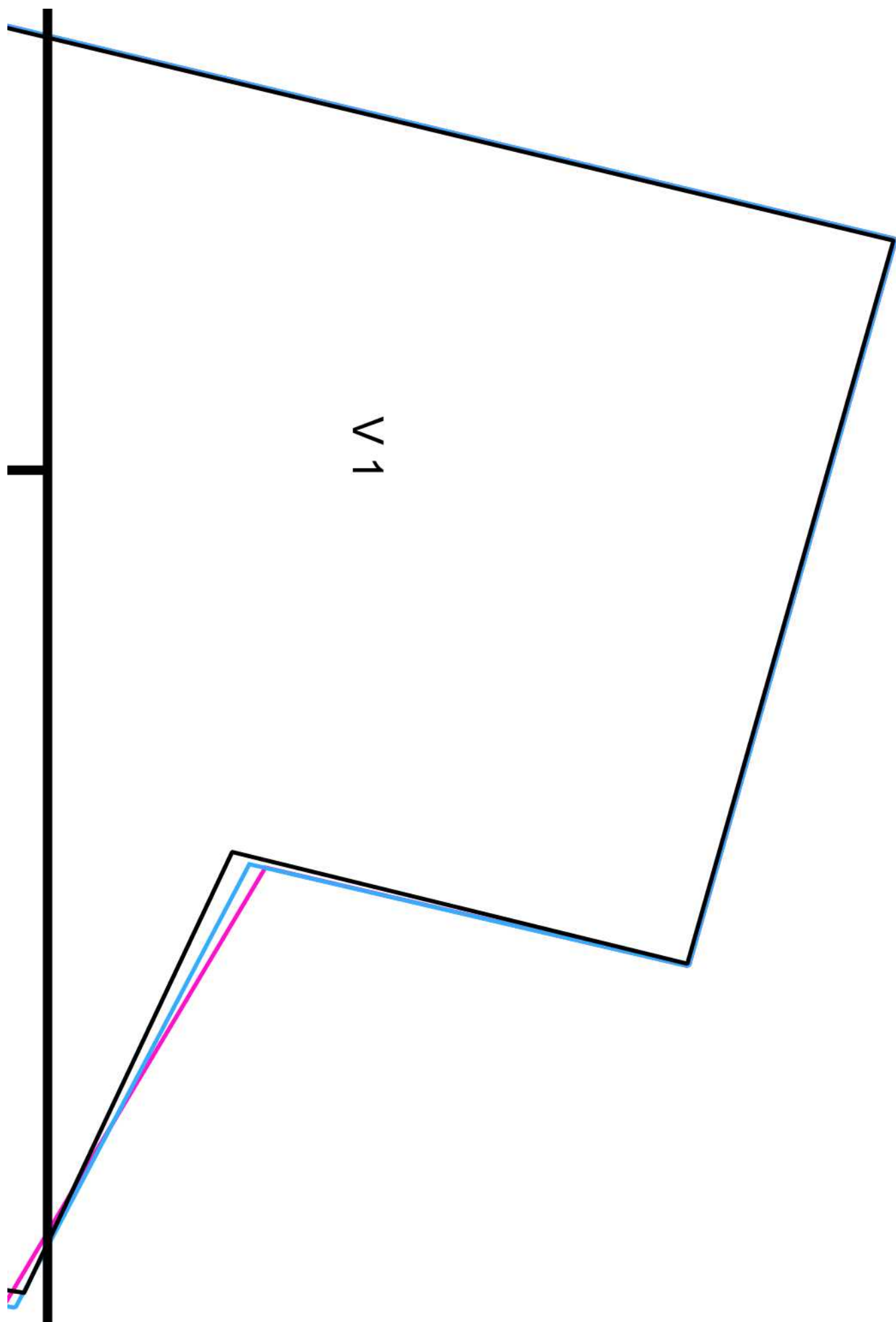


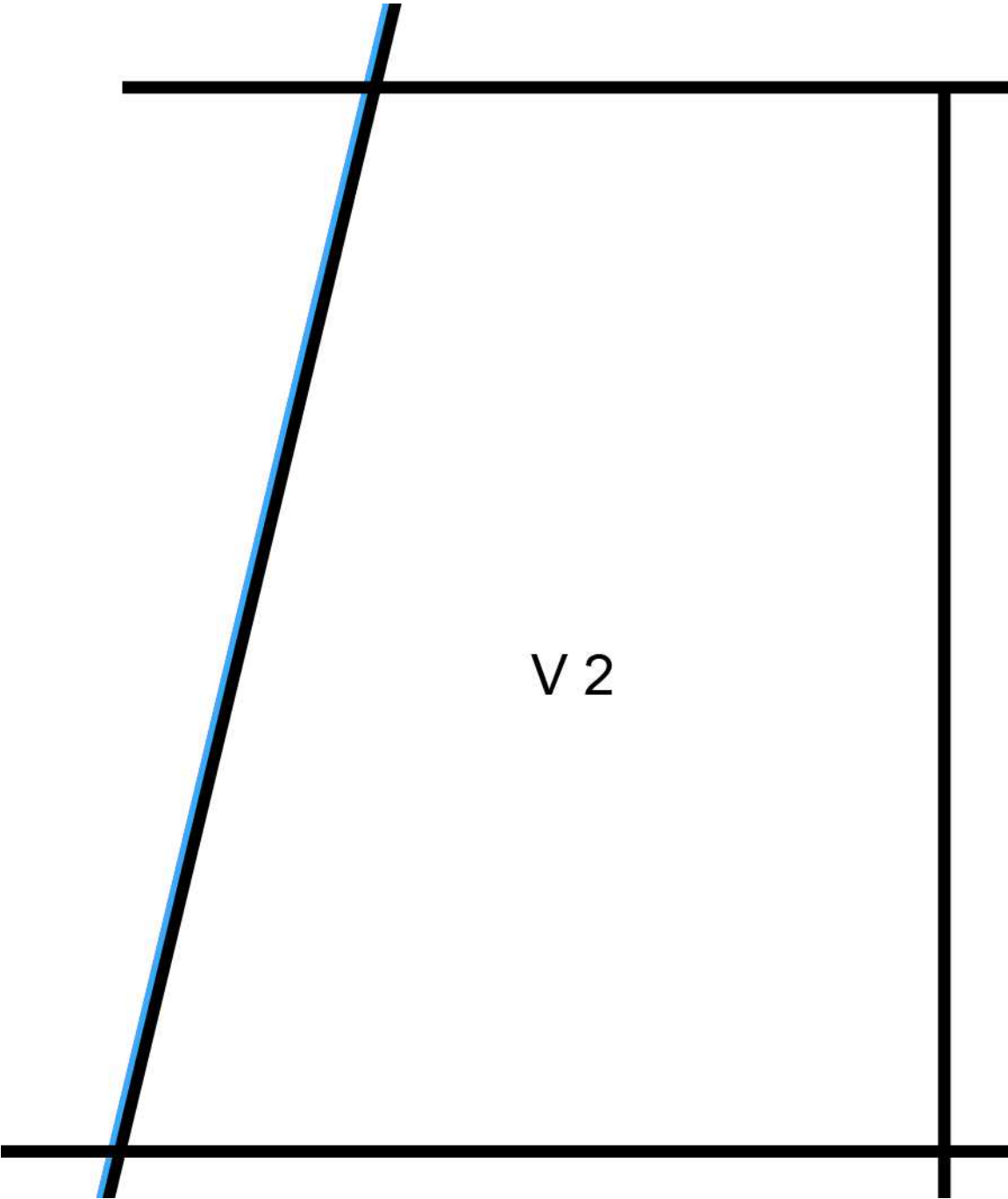


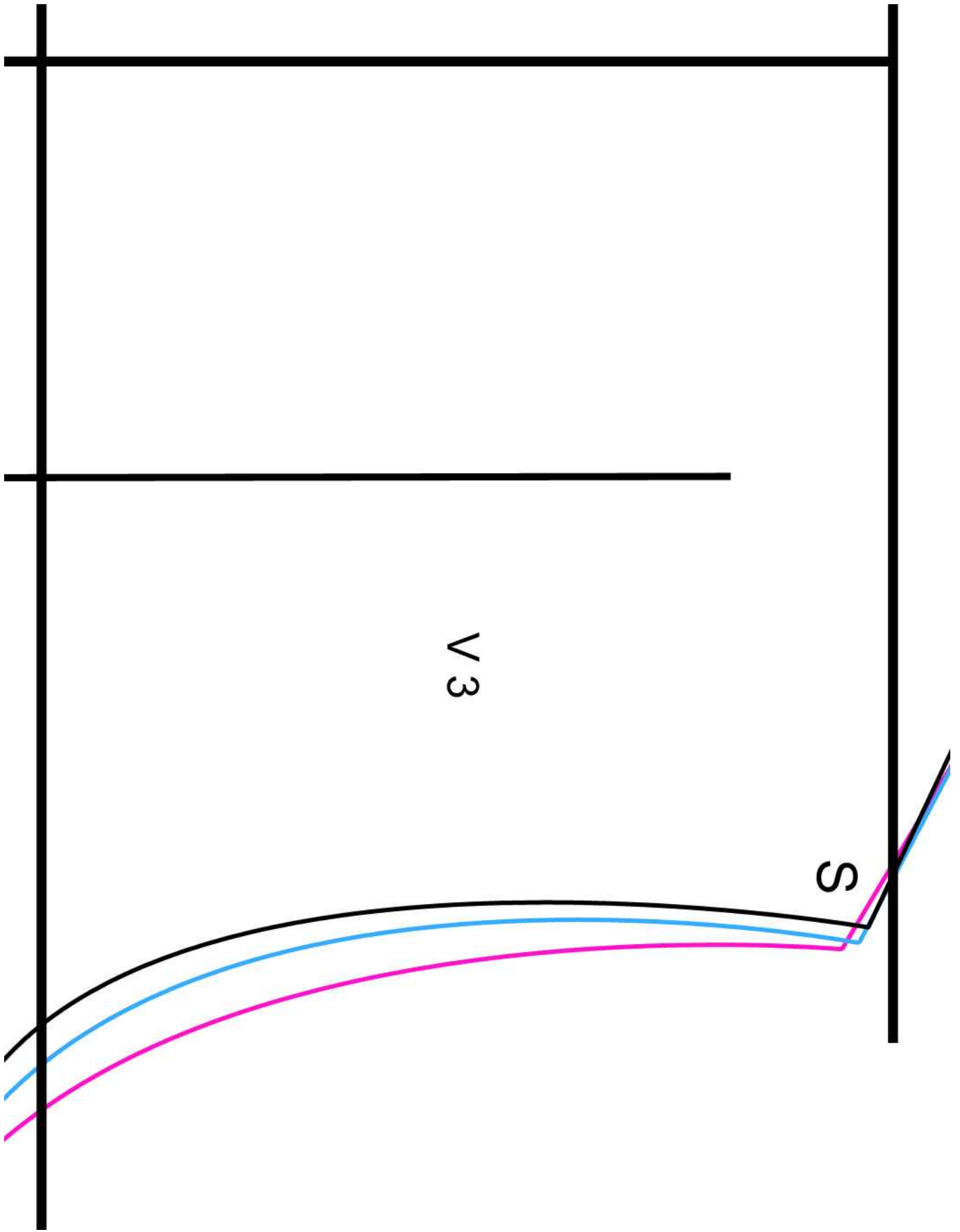
R 4

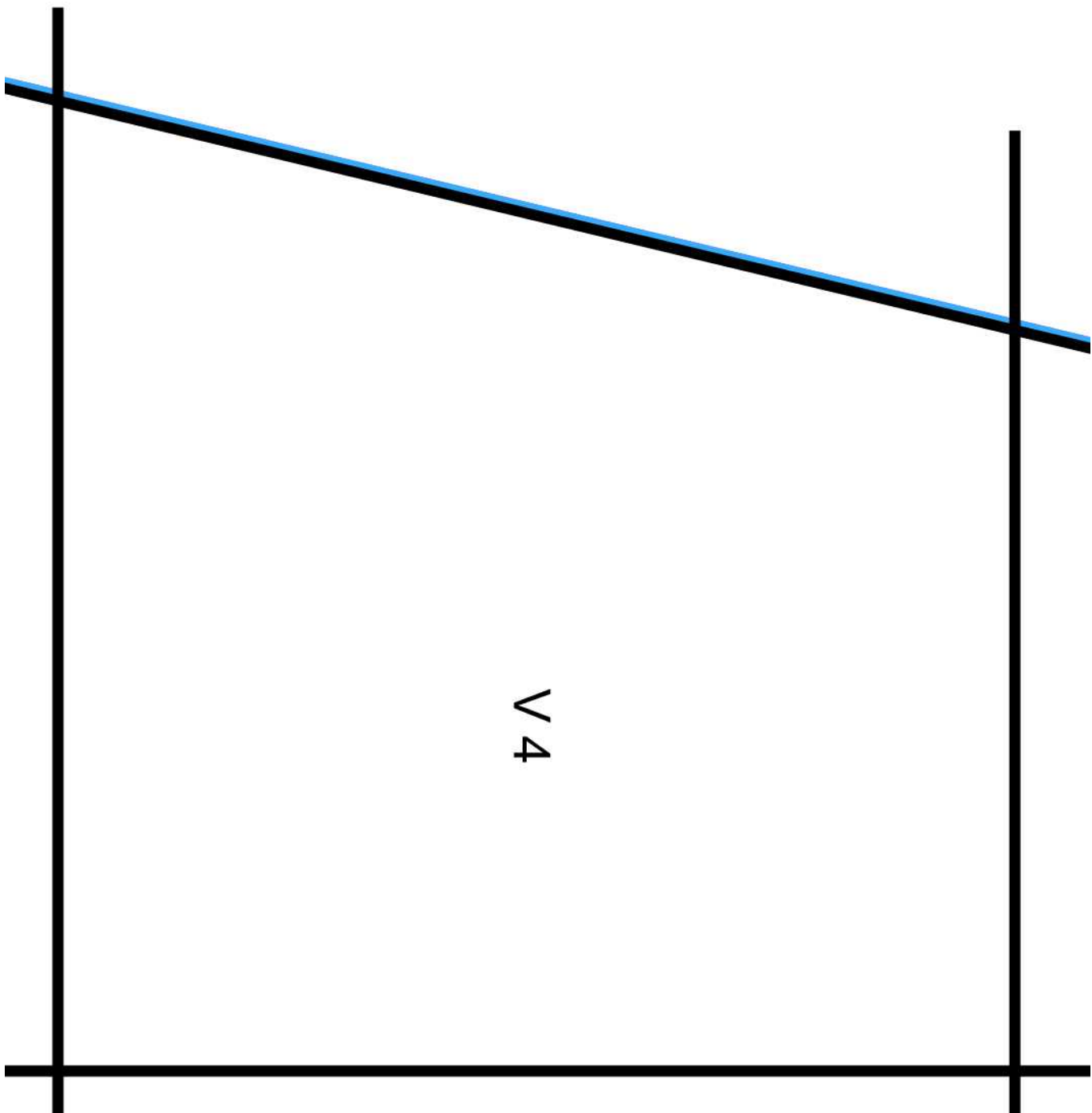


R 5





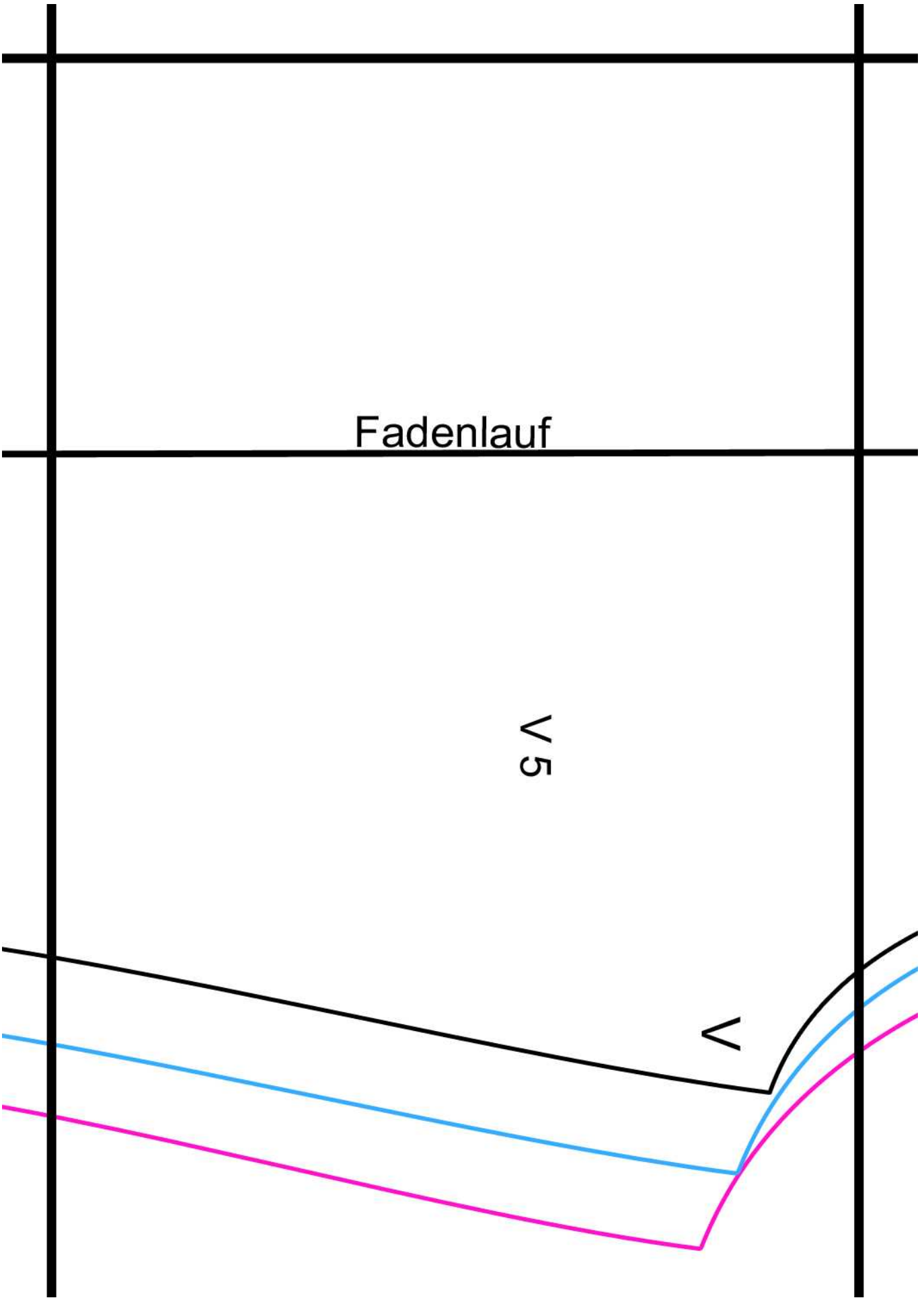




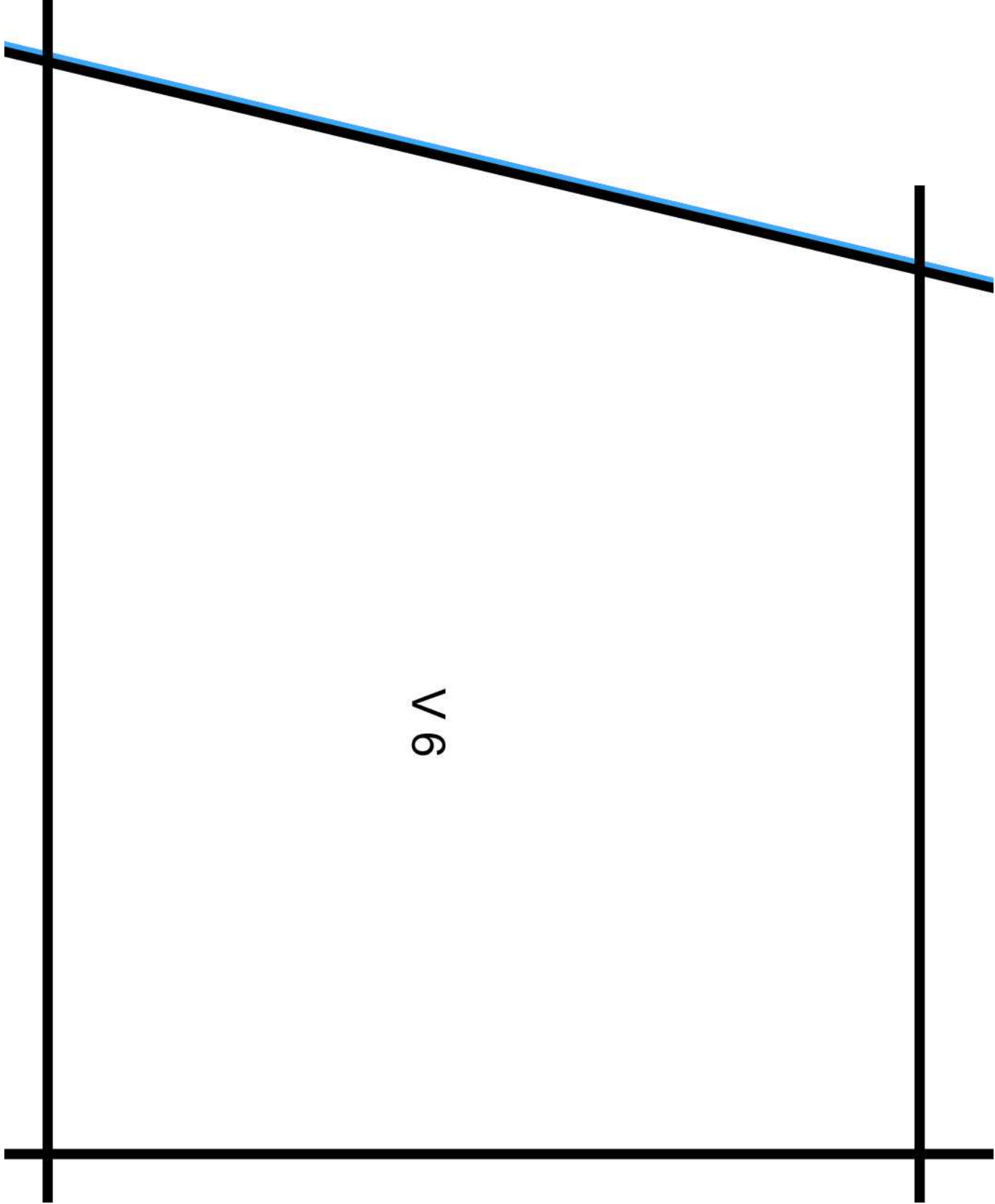
Fadenlauf

5 V

∧

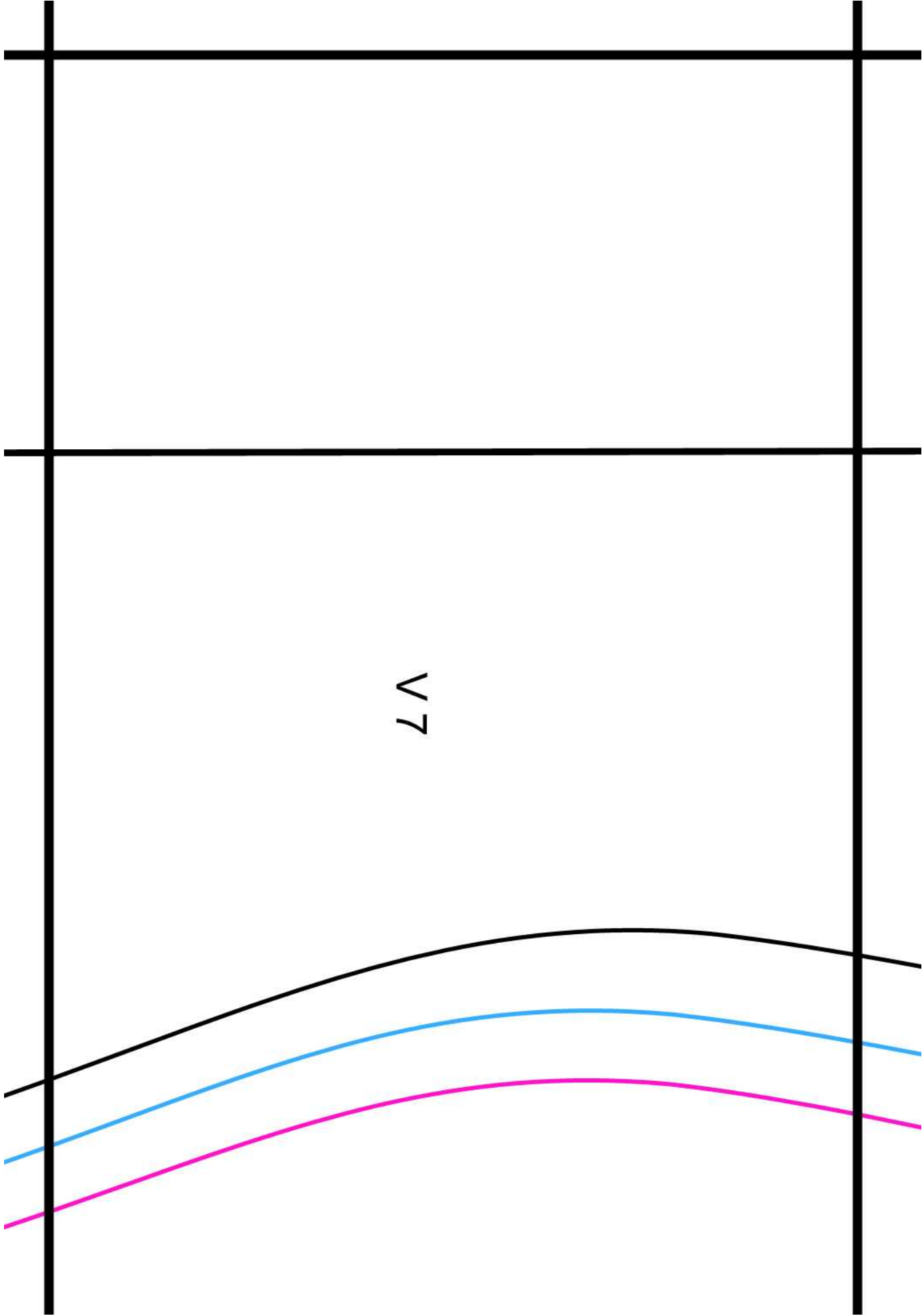


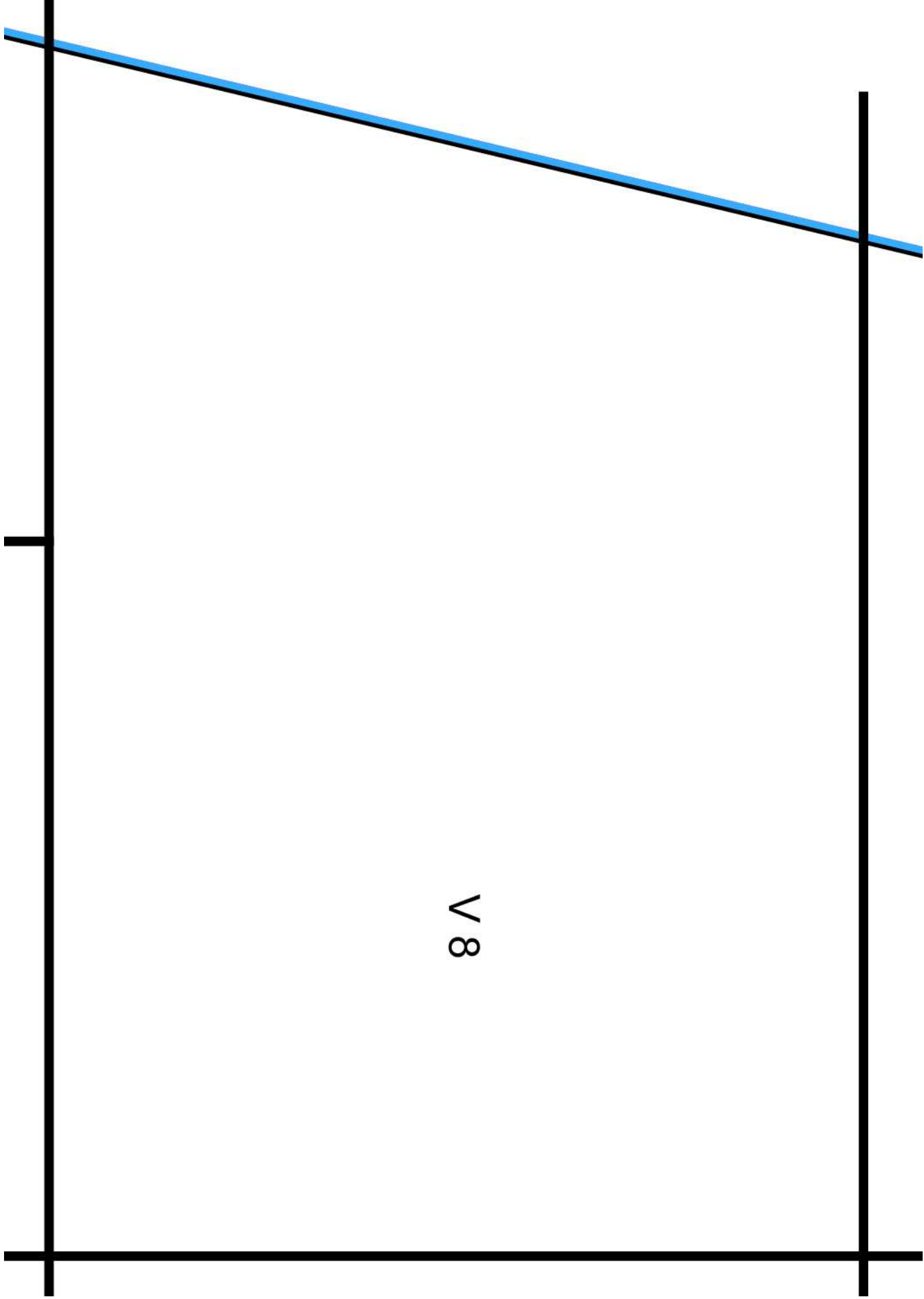


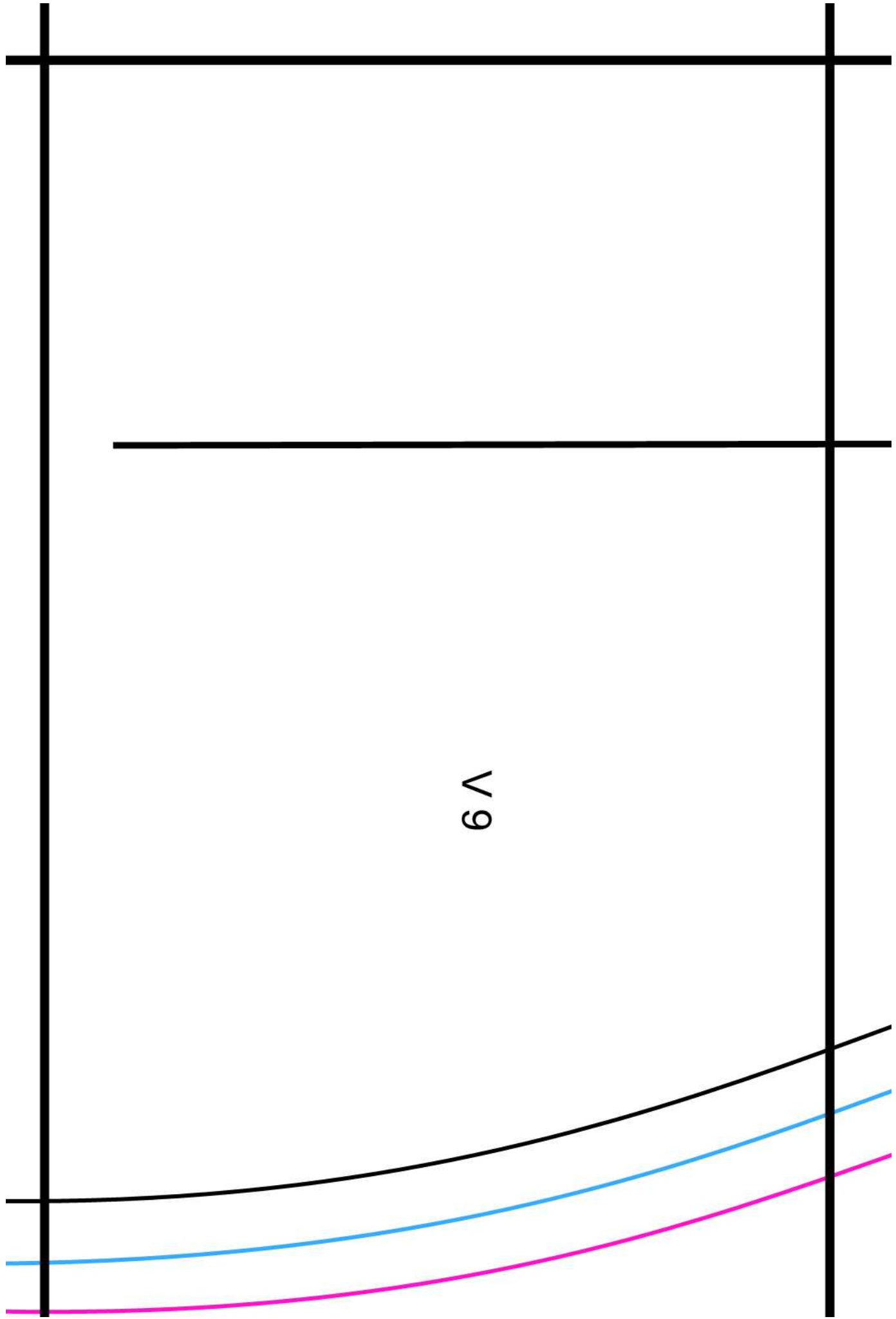


V 6

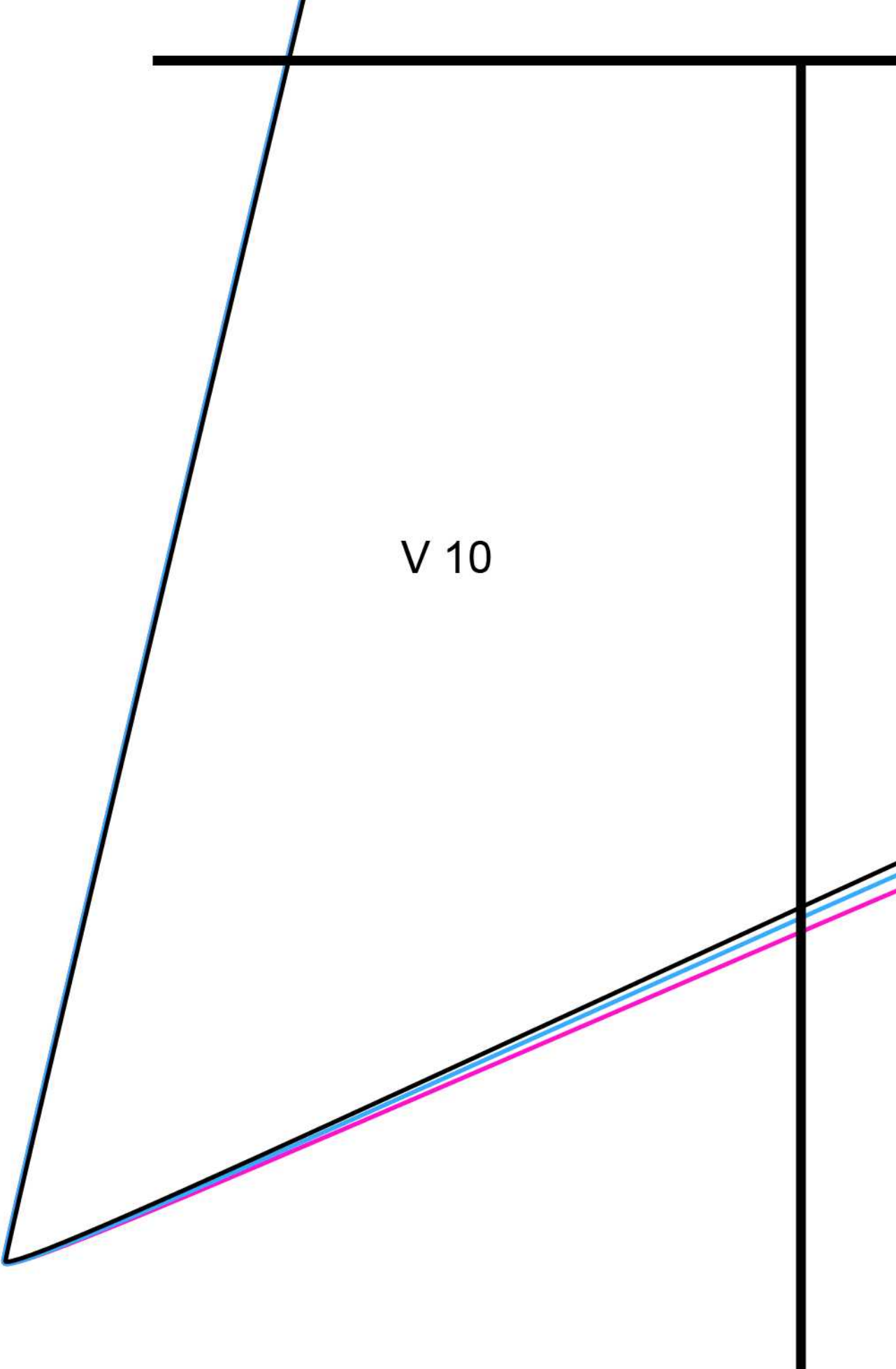
V7



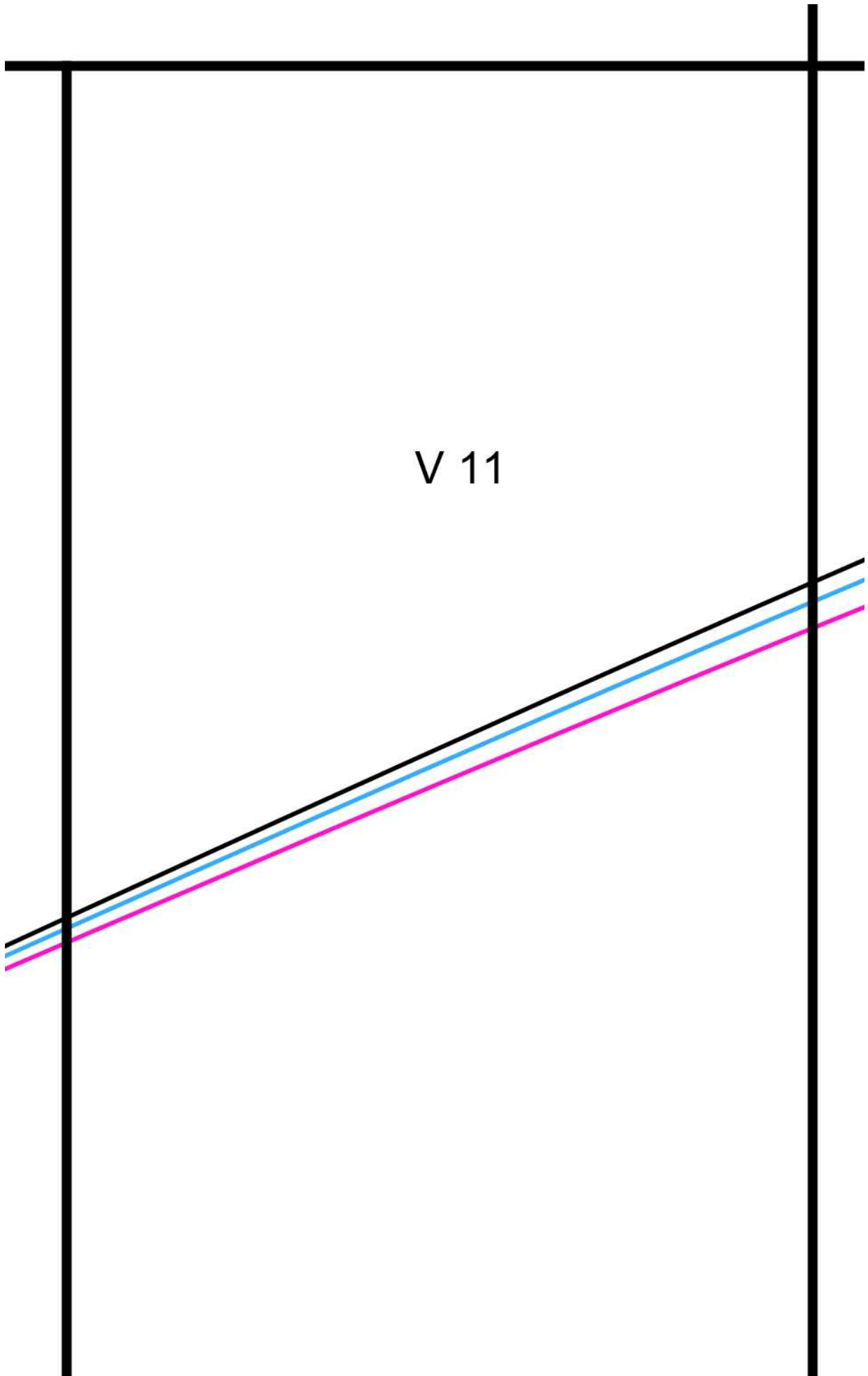




V 9



V 10



V 11

