

Verflixt und Zugenäht

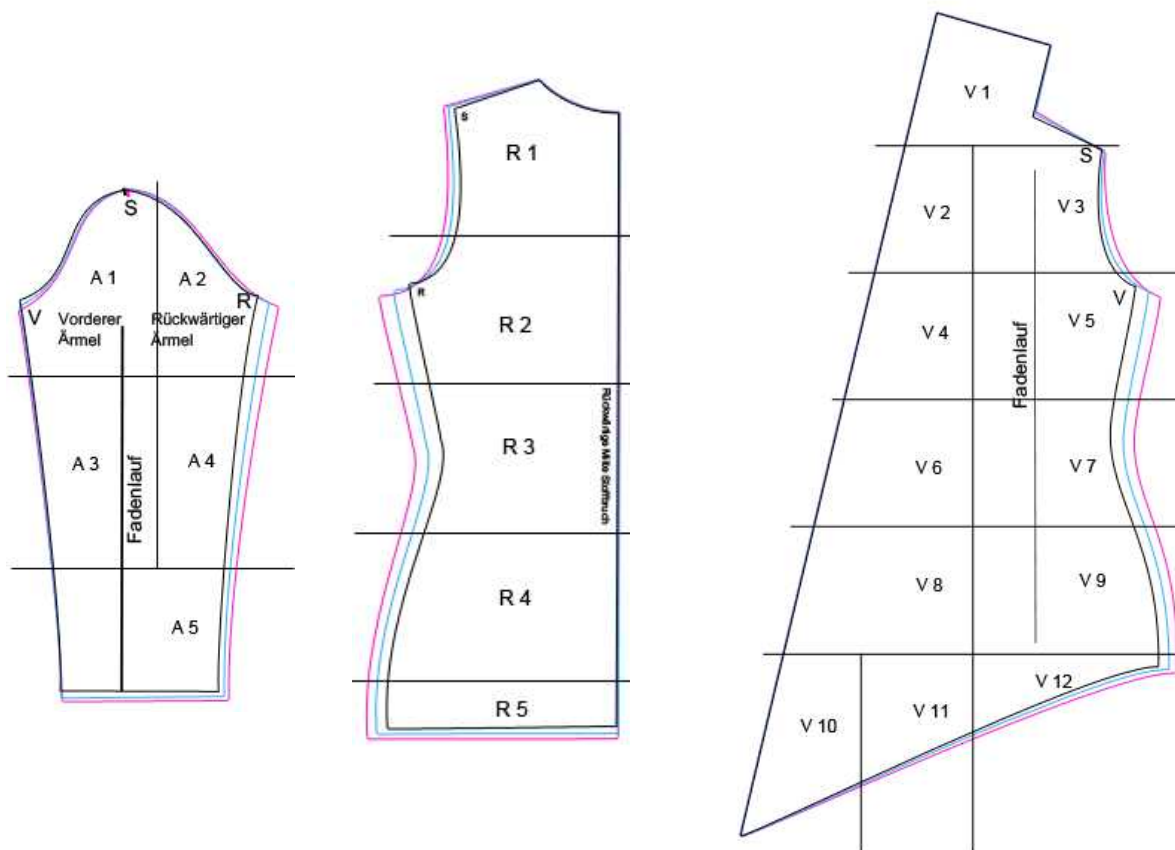
www.schneidern-naehen.de

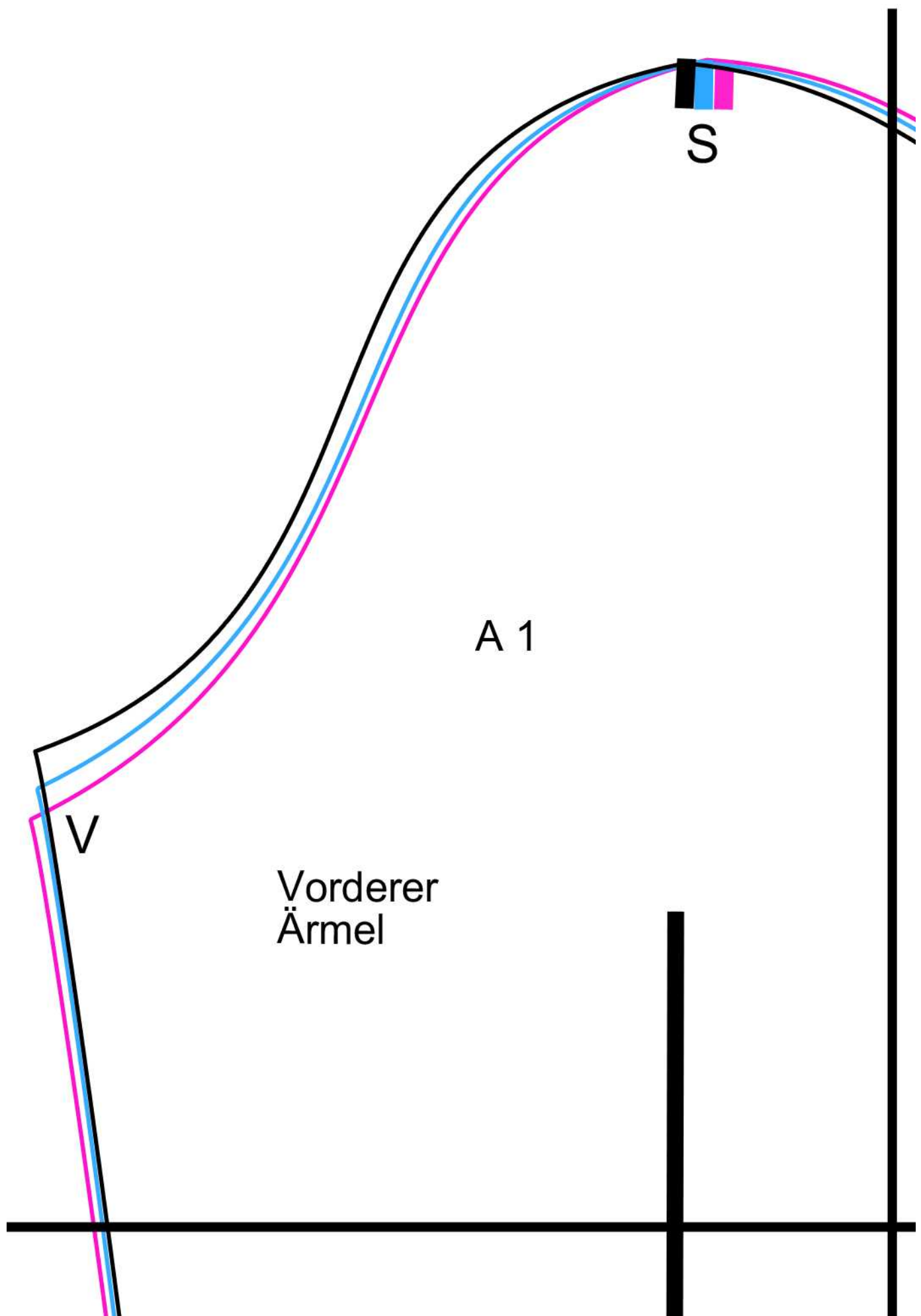
Schnittmuster – Zipfeljacke

Drucken Sie das Schnittmuster aus. Kleben Sie die Teile an den schwarzen Linien zusammen. Die Linien treffen aufeinander.

- Schwarz = Größe S
- Blau = Größe M
- Pink = Größe L

Übersicht



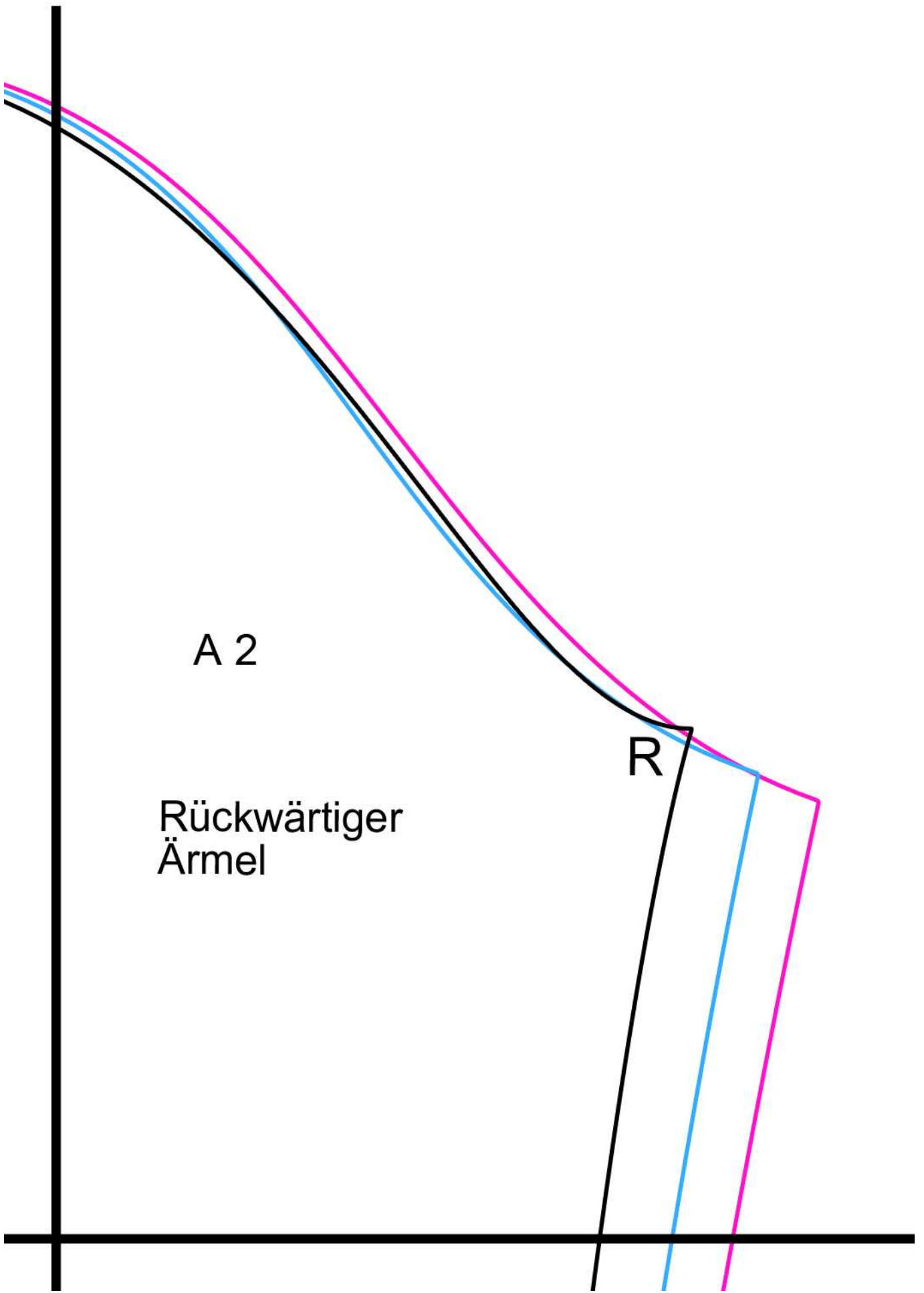


V

Vorderer
Ärmel

A 1

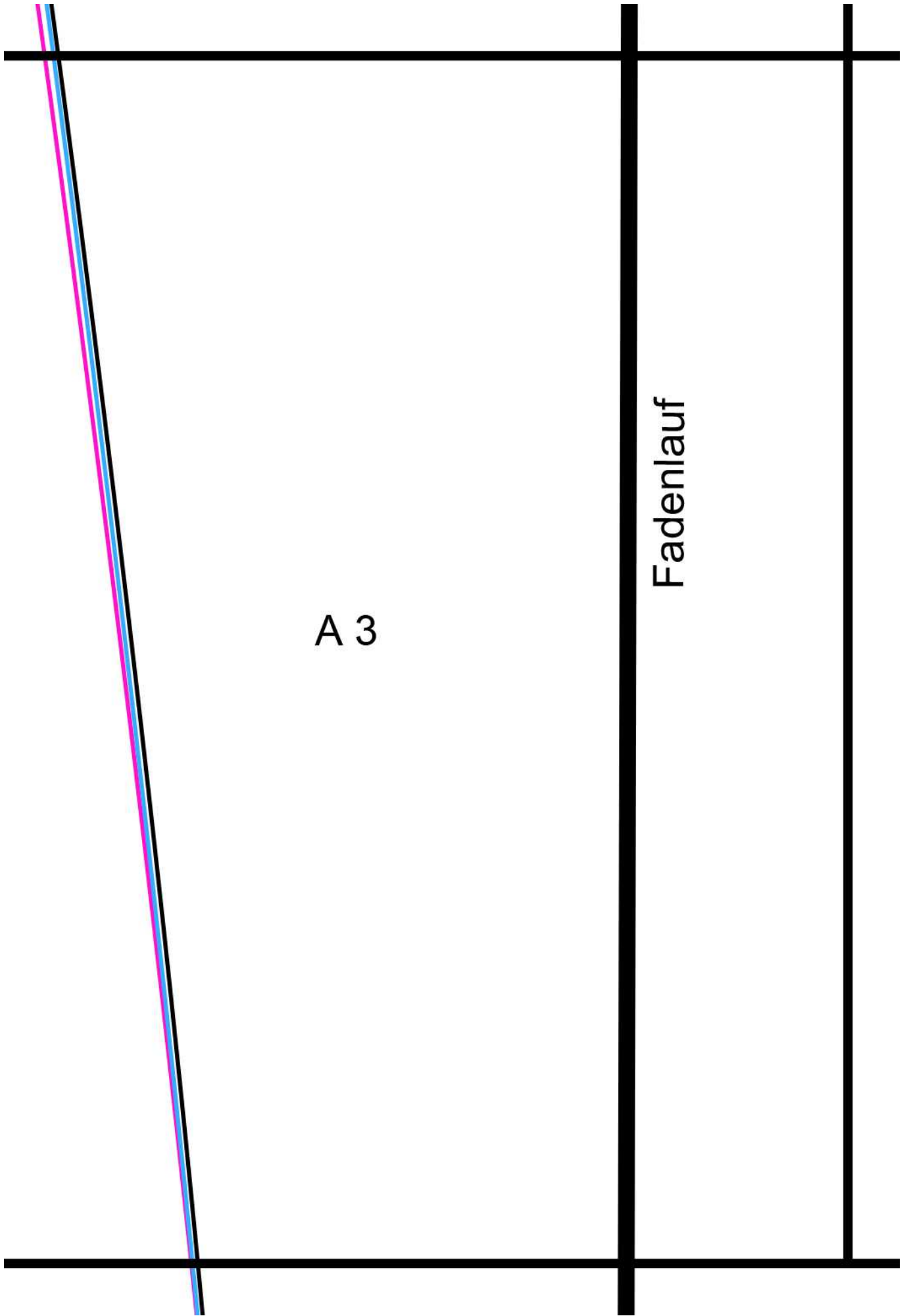
S



A 2

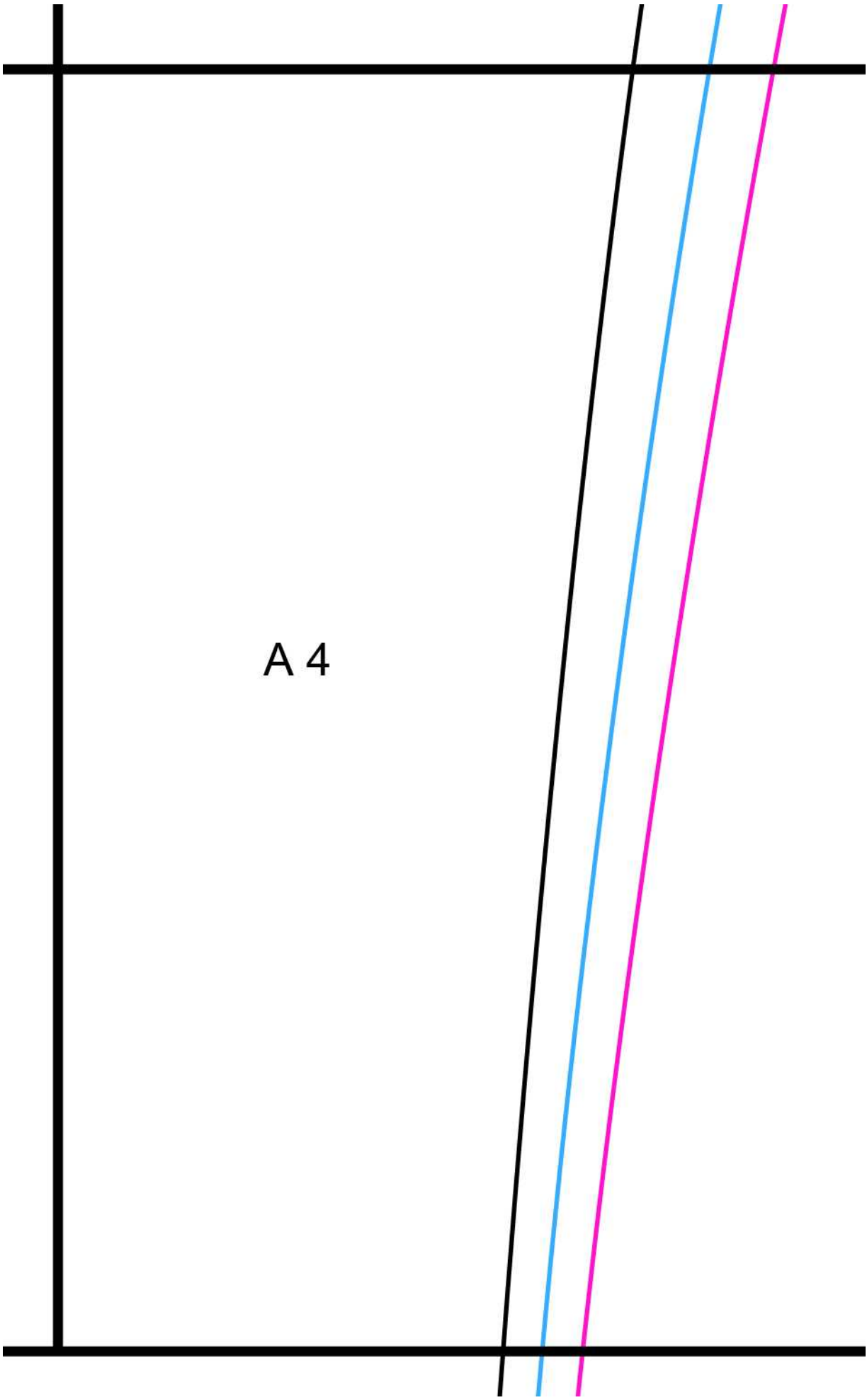
Rückwärtiger
Ärmel

R

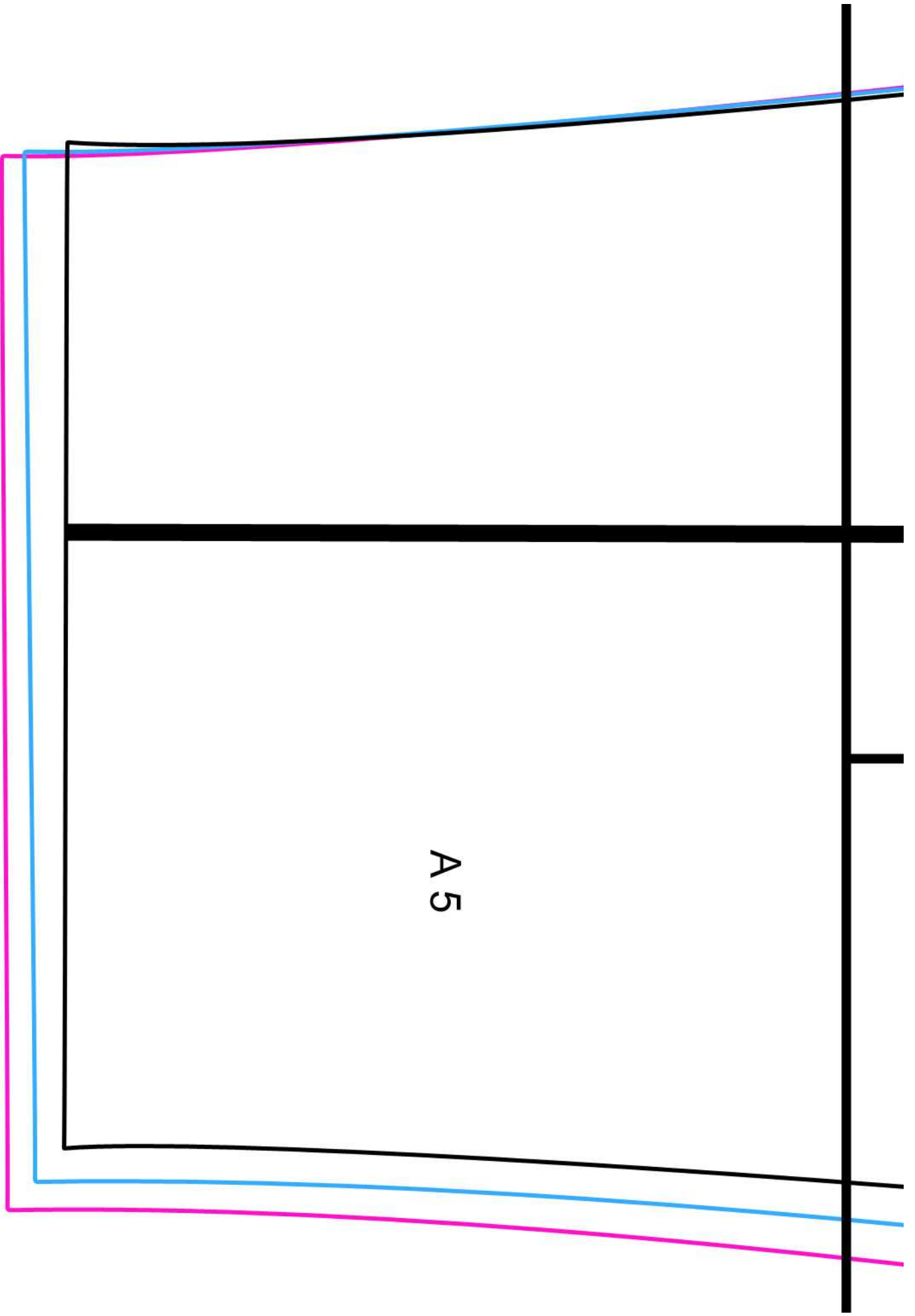


A 3

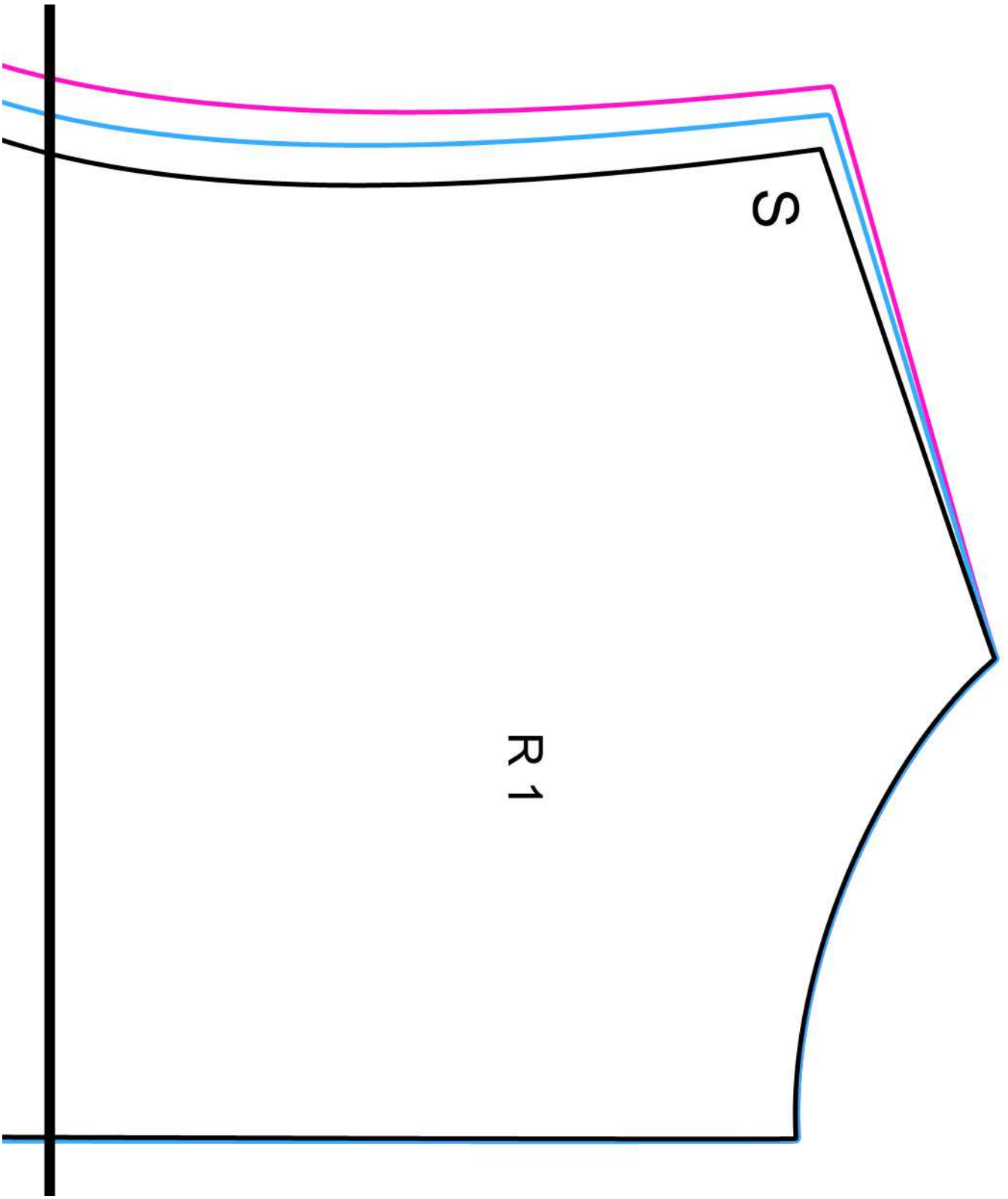
Fadenlauf

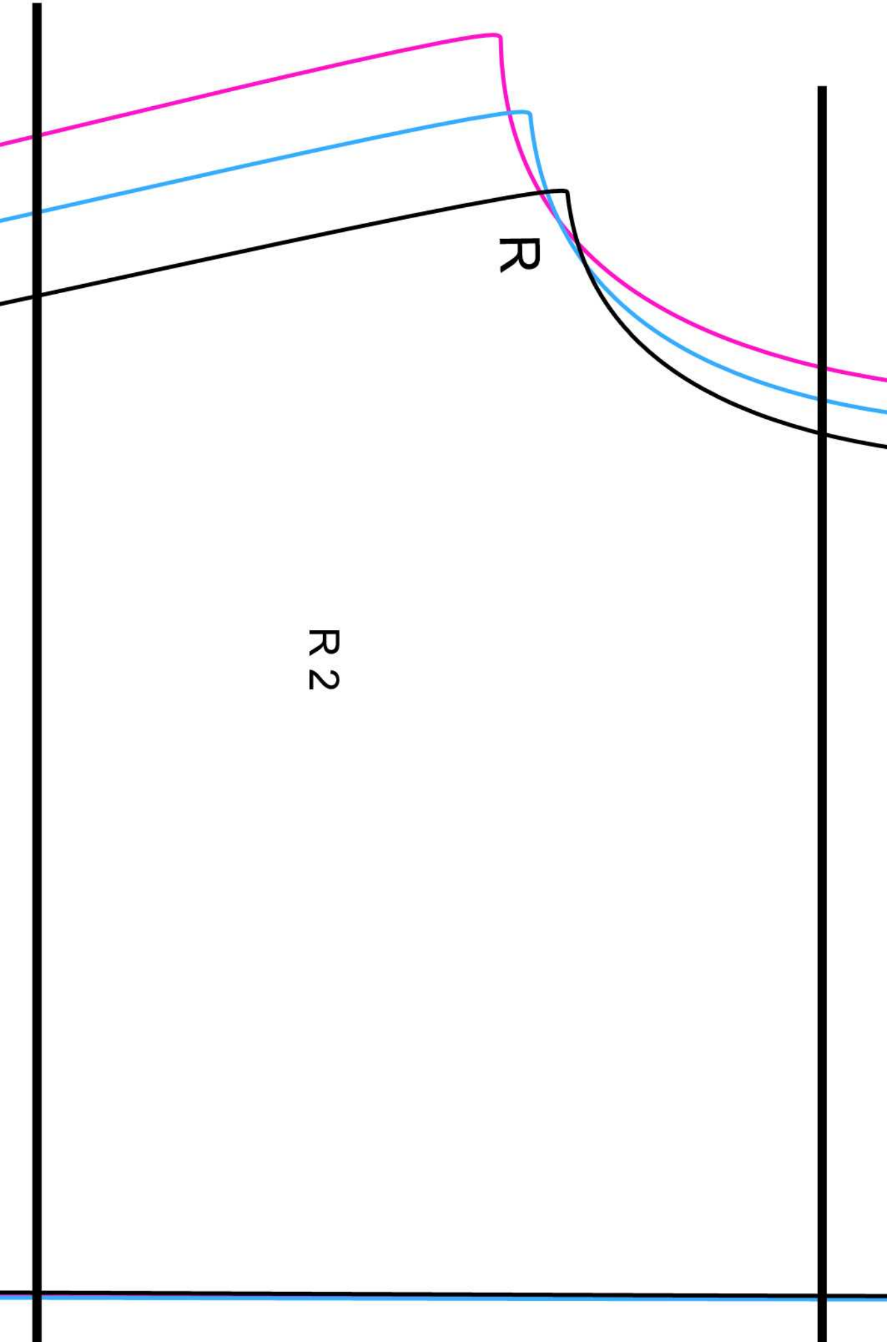


A 4



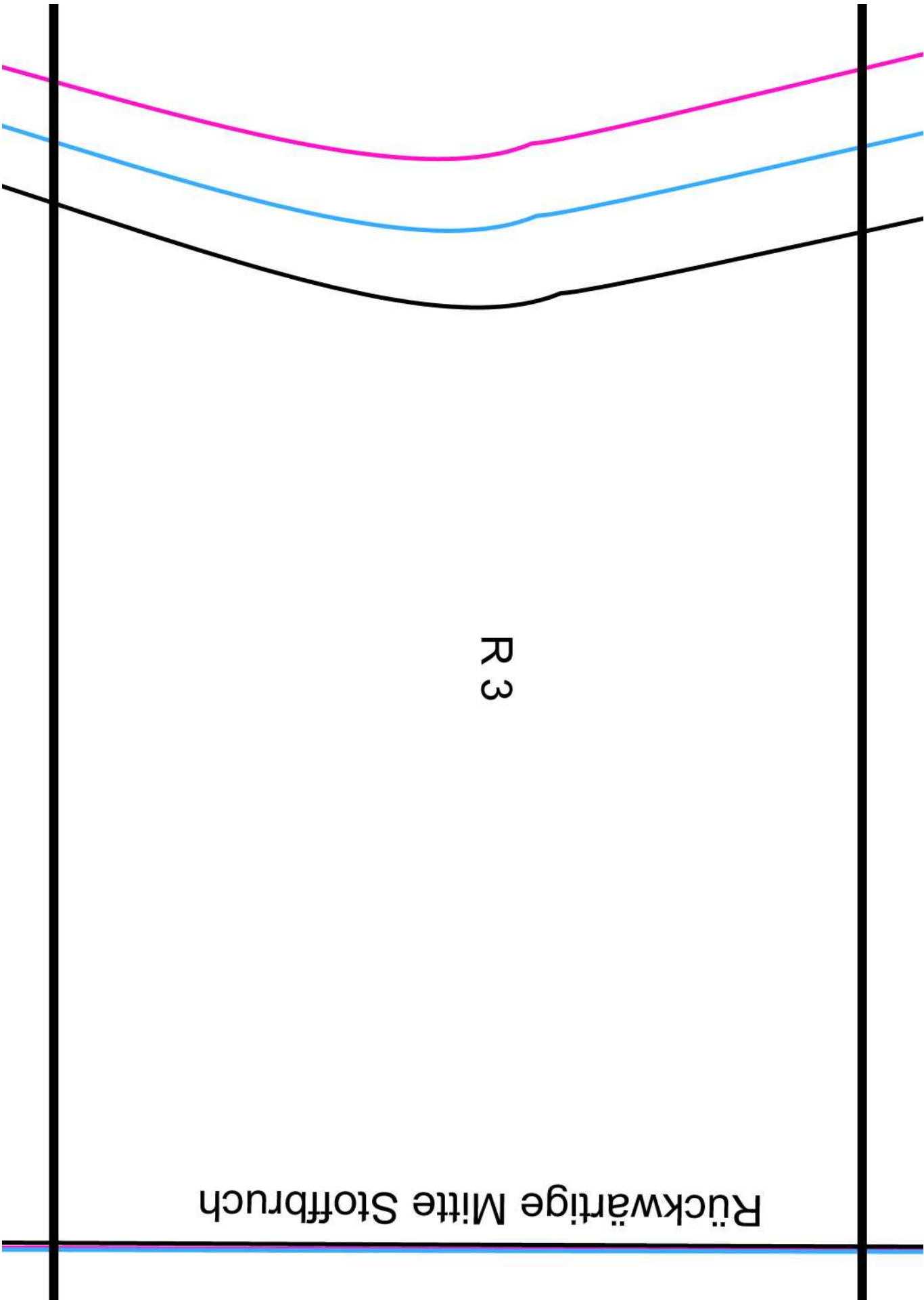
A 5

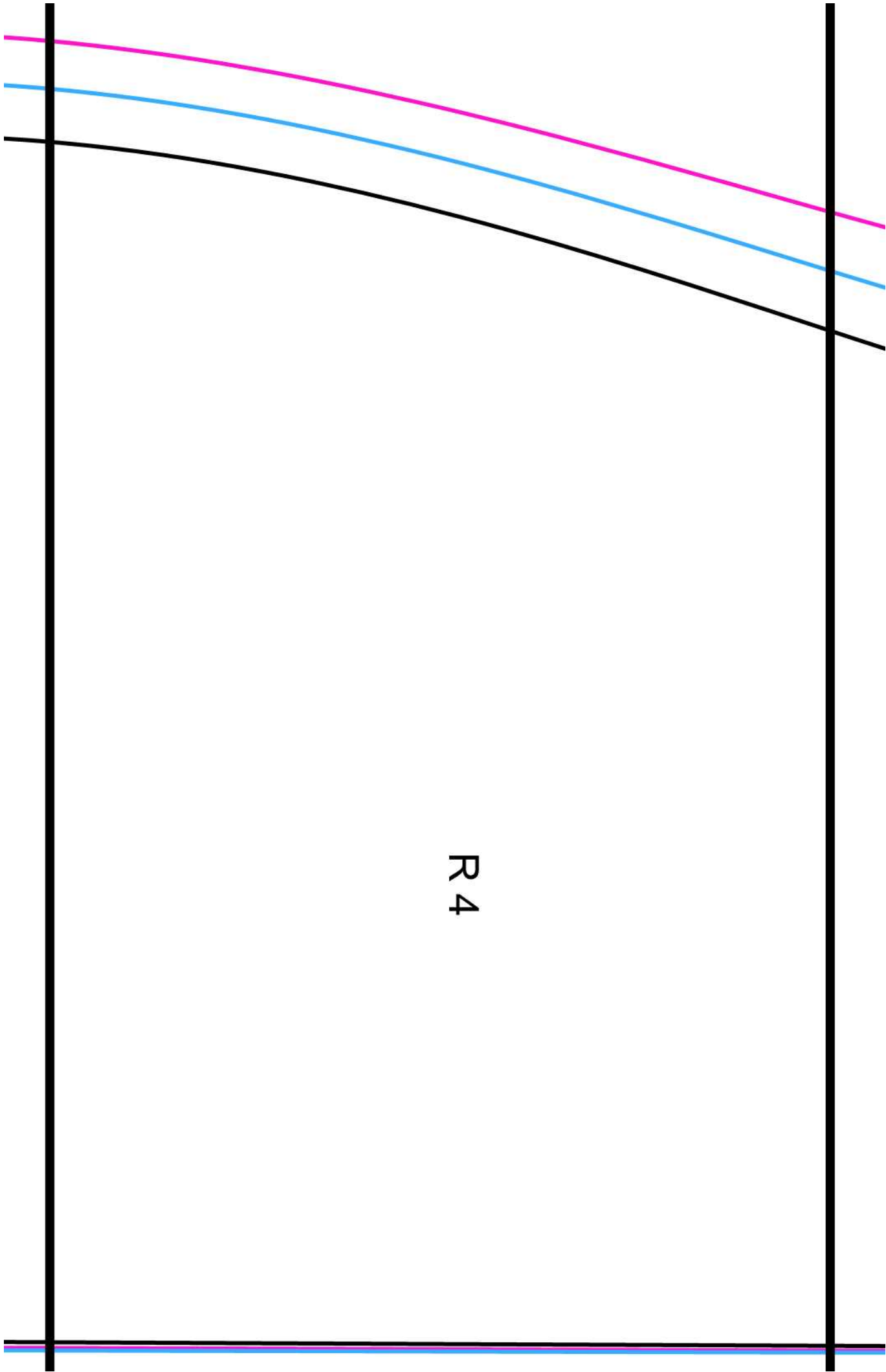




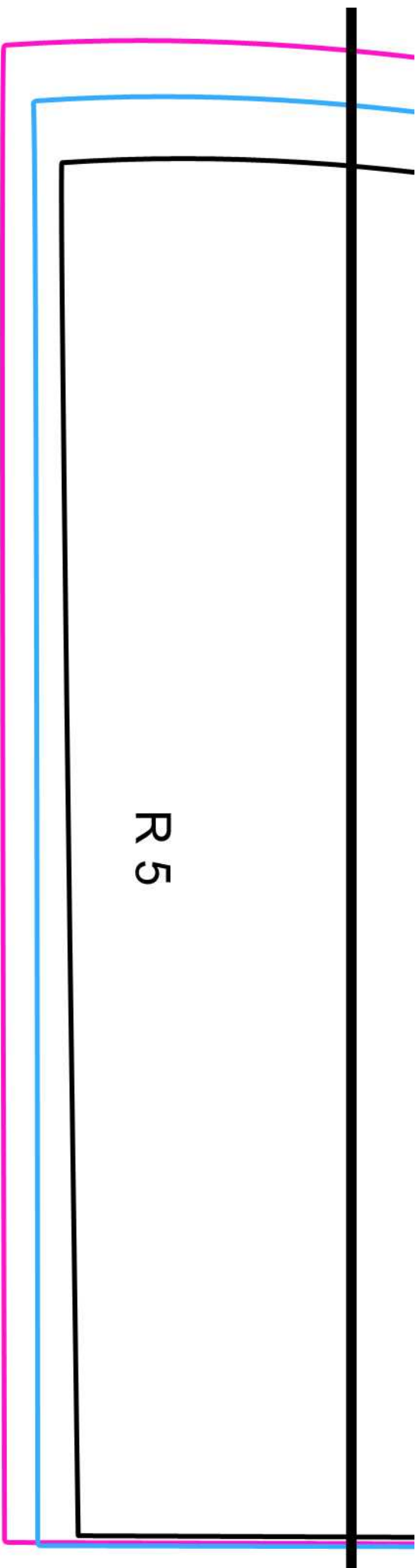
Rückwärtige Mitte Stoffbruch

R 3

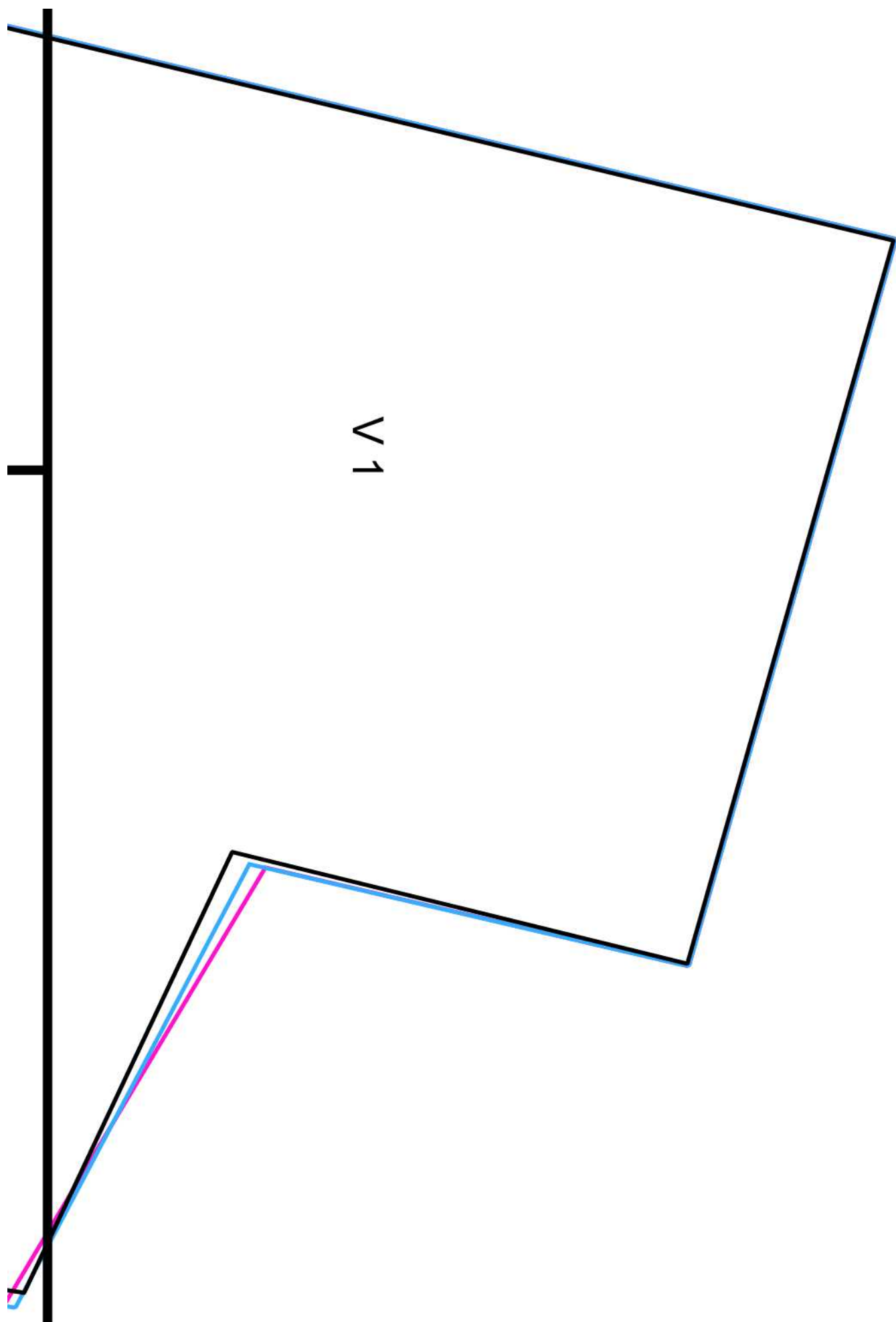


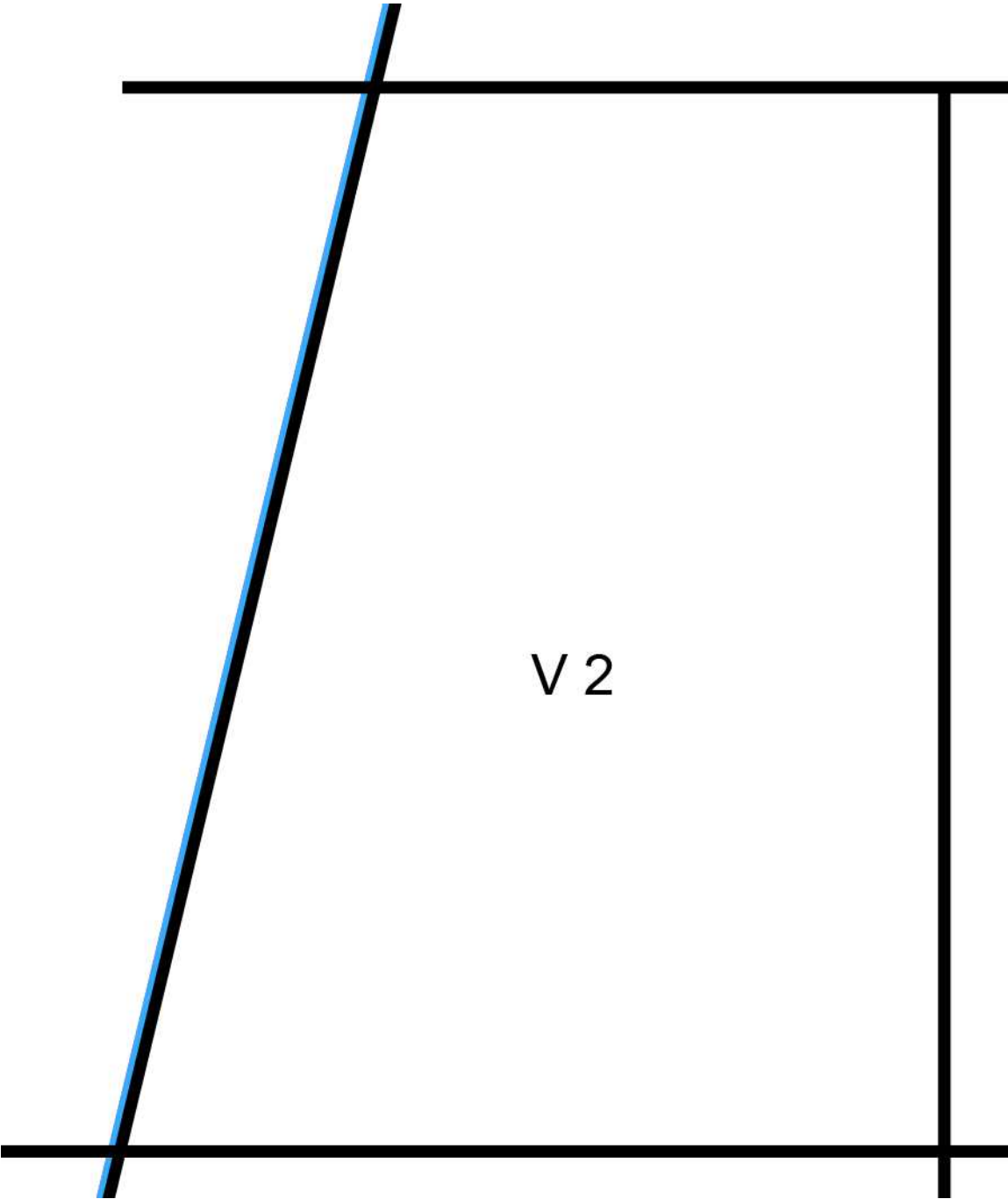


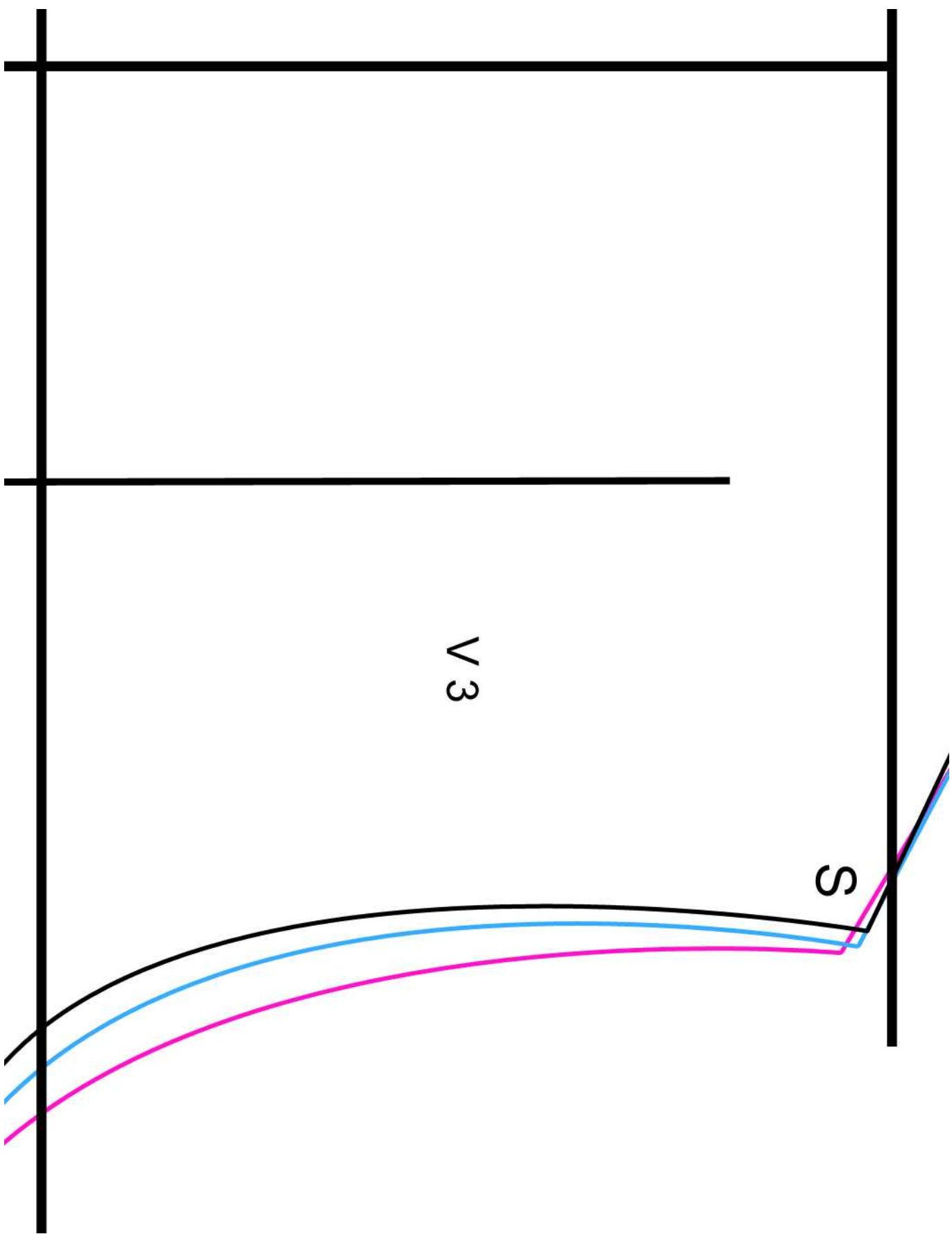
R 4

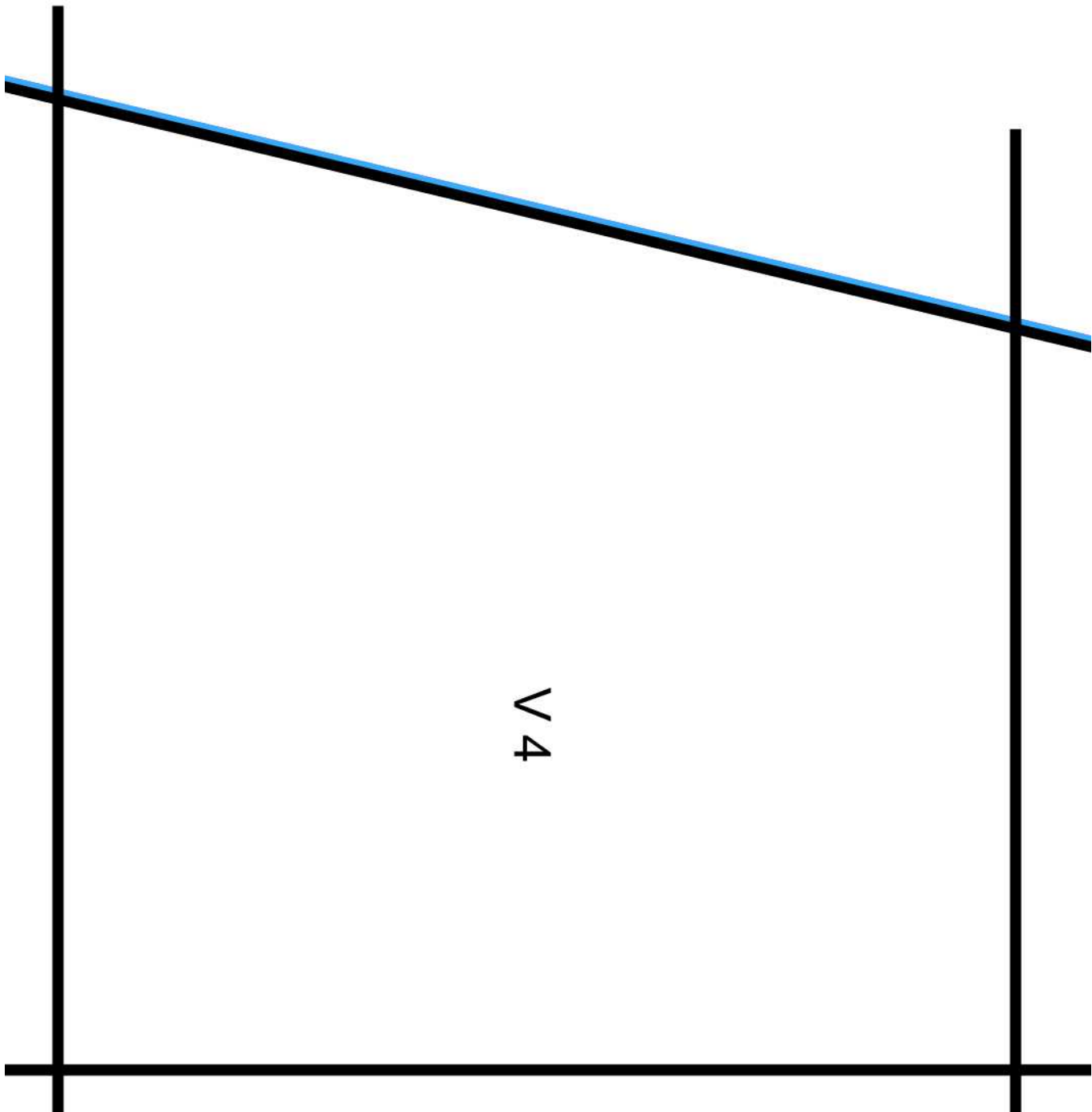


R 5





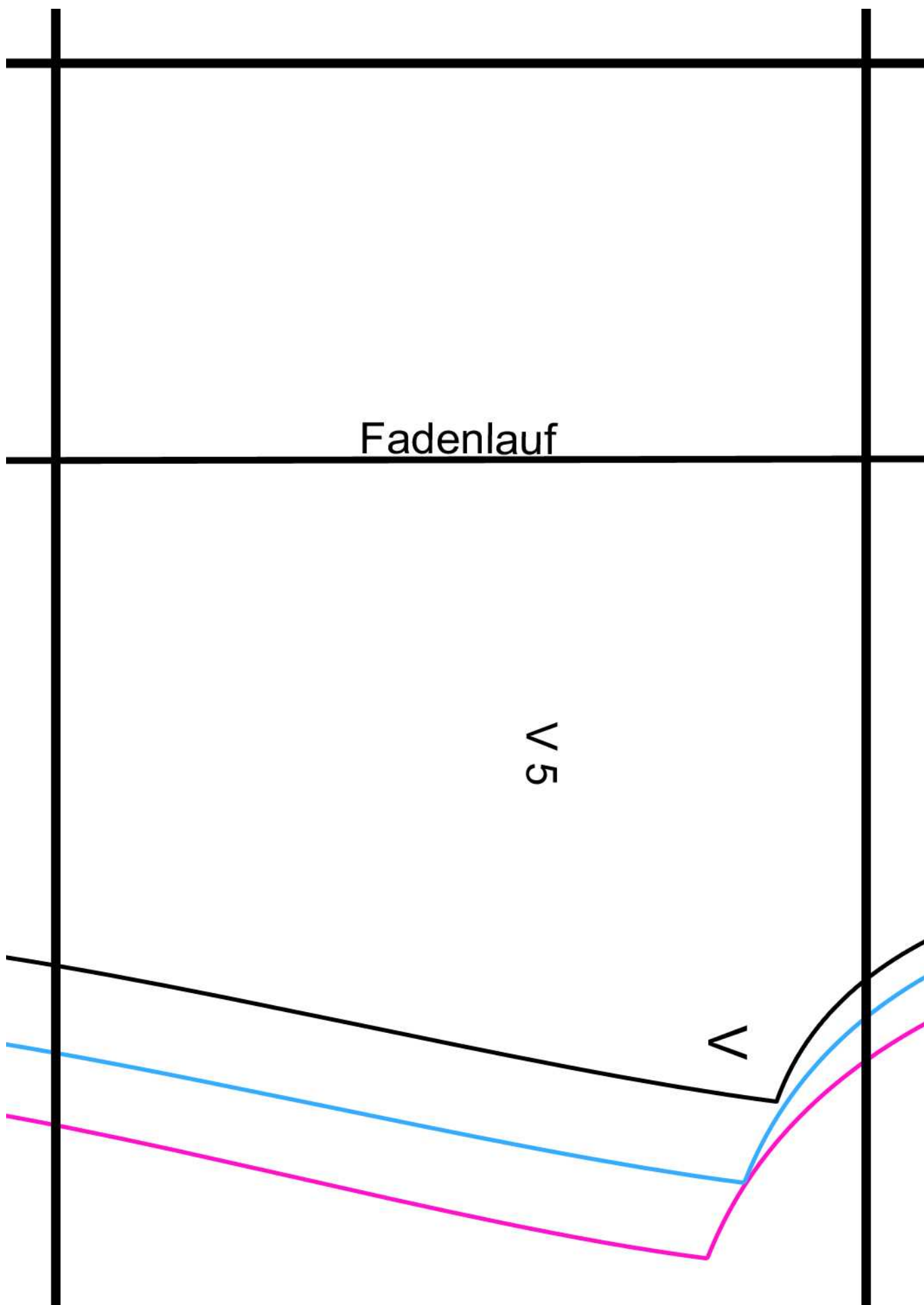


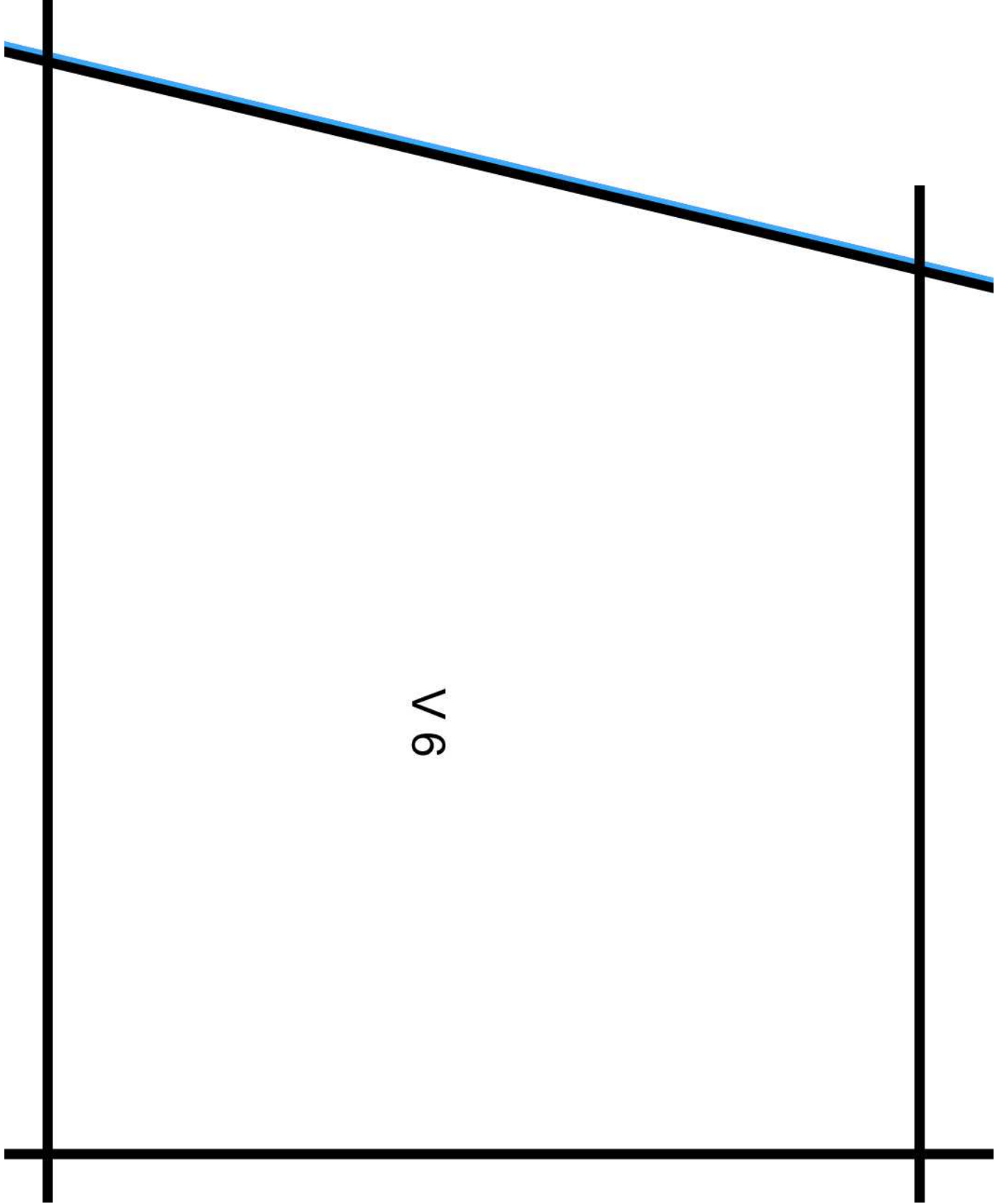


Fadenlauf

V5

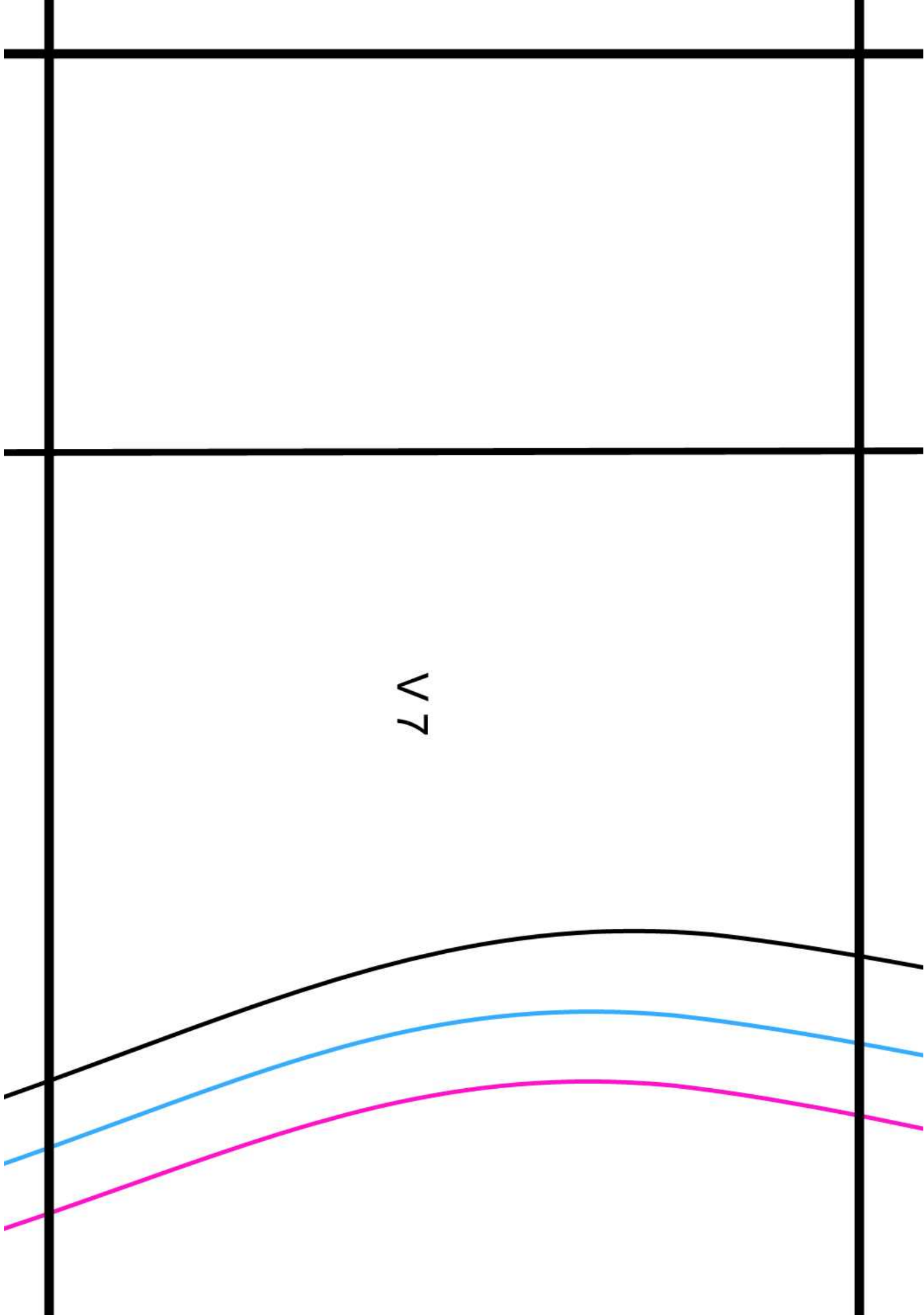
V

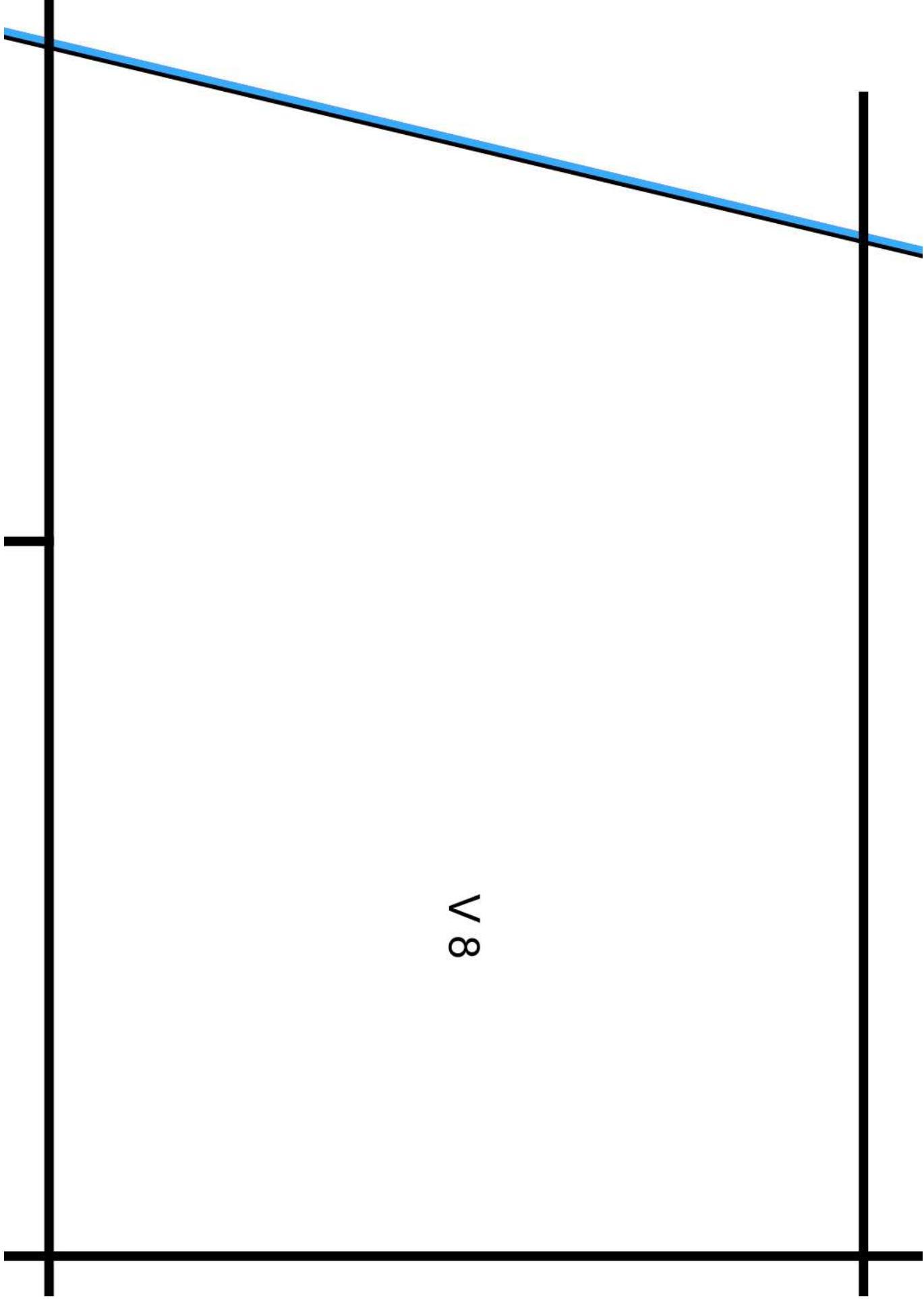


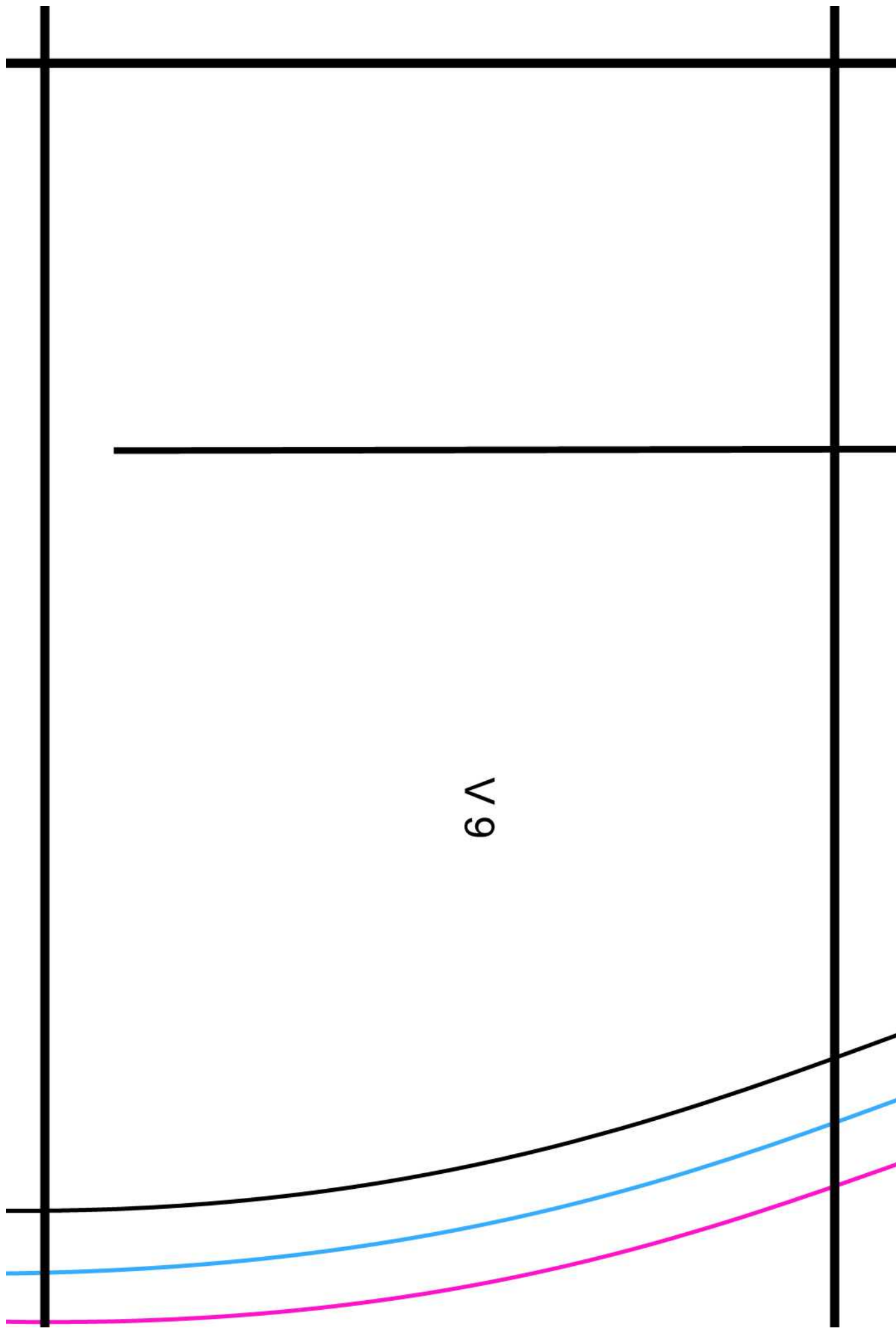


V 6

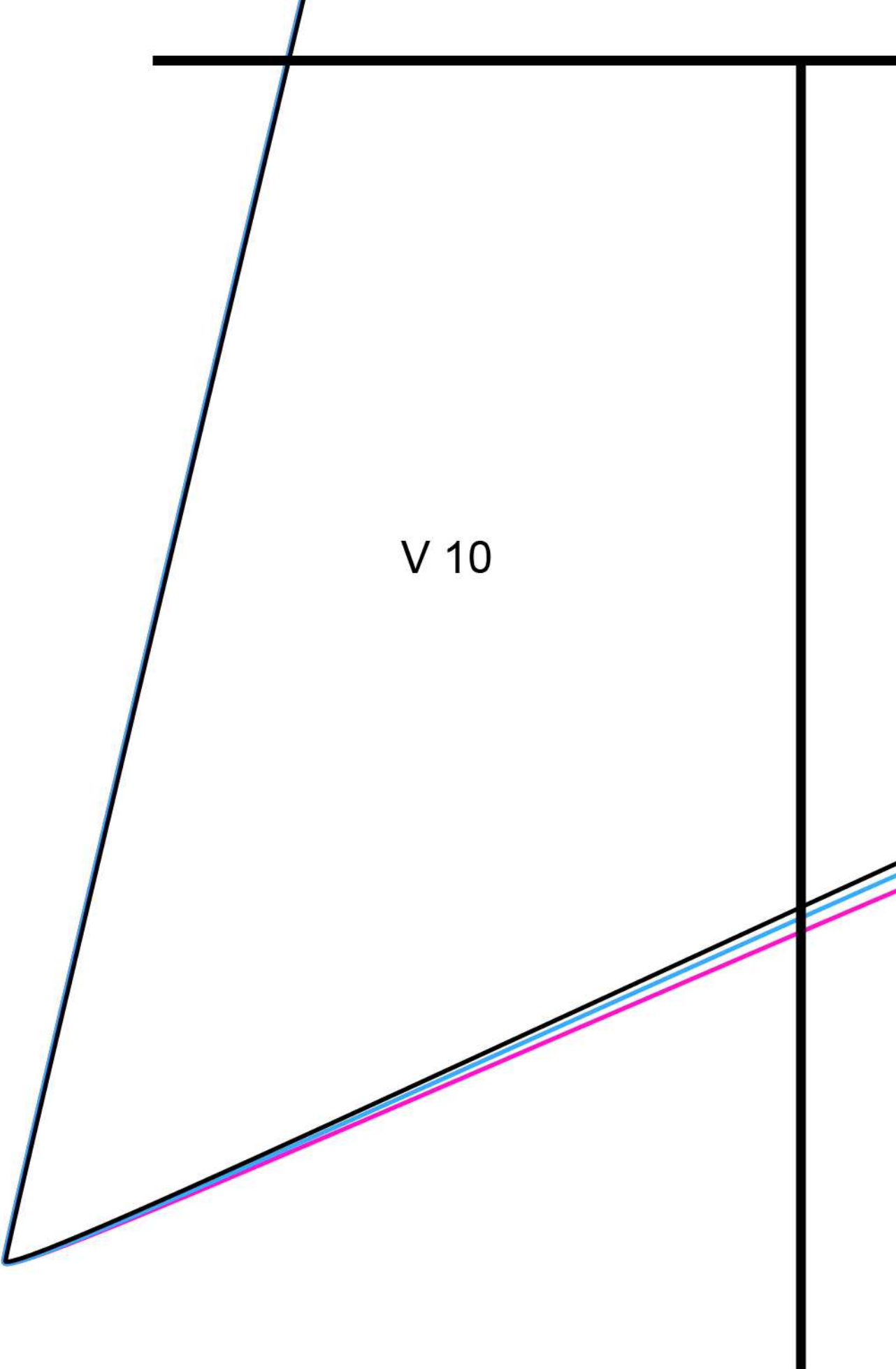
V7



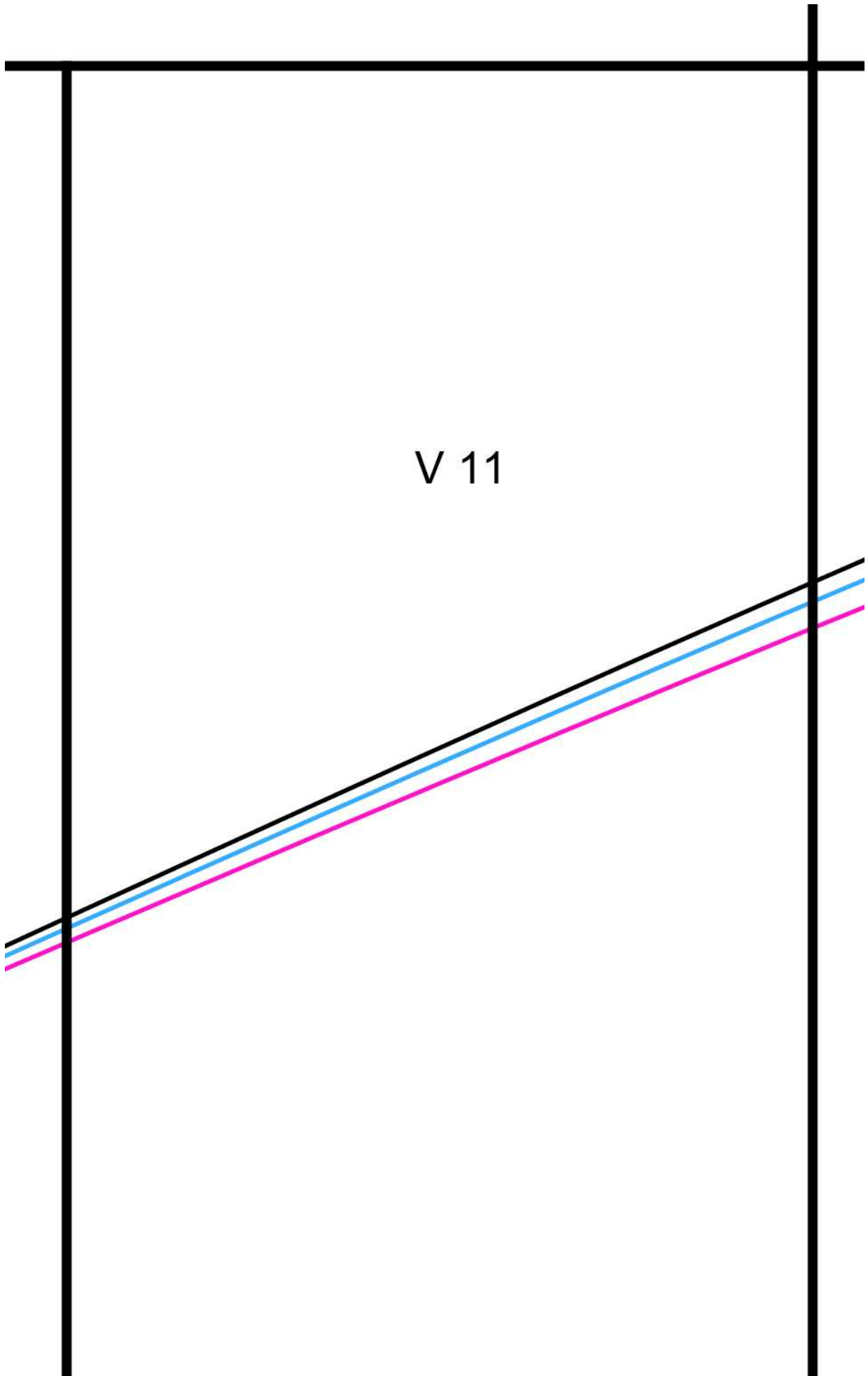




V 9



V 10



V 11

