

# Verflixt und Zugenäht



Kleidung nähen und mehr ... [www.schneidern-naehen.de](http://www.schneidern-naehen.de)

## Schnittmuster für eine Jerseyhose mit Rock Größe S, M, L und XL

Die passende Nähanleitung gibt es unter:  
<http://www.schneidern-naehen.de/hose-schneidern>

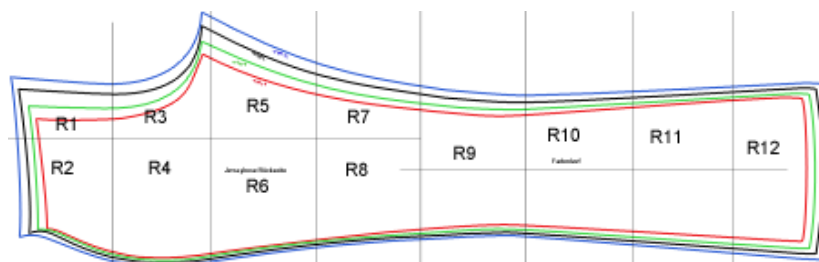
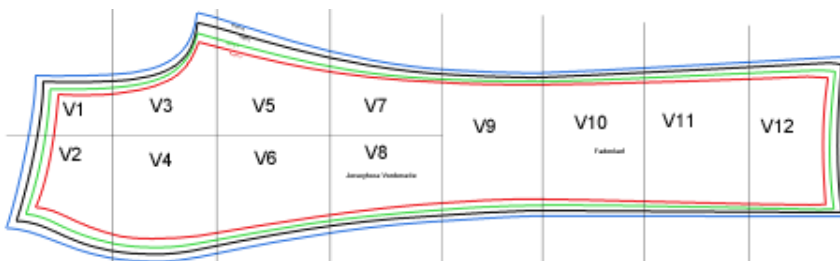
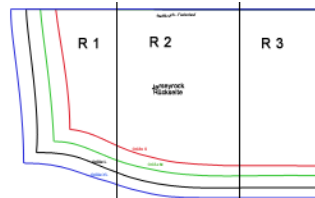
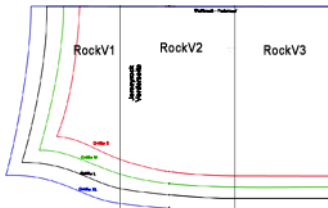
Drucken Sie das Schnittmuster aus. Dabei die **Seitengröße beibehalten** und **nicht** an die Seitengröße anpassen, sonst wird der Ausdruck verkleinert.

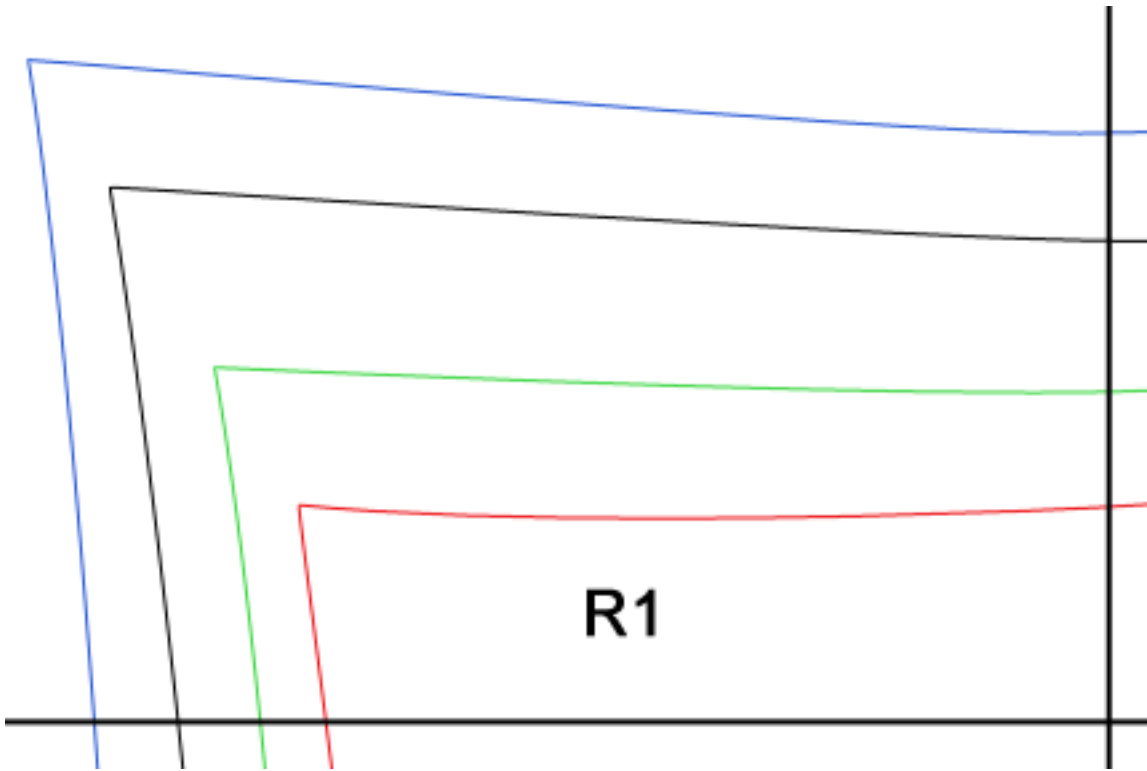
Blätter / Schnitt-Teile an den Linien zusammenkleben. Linien treffen aufeinander.

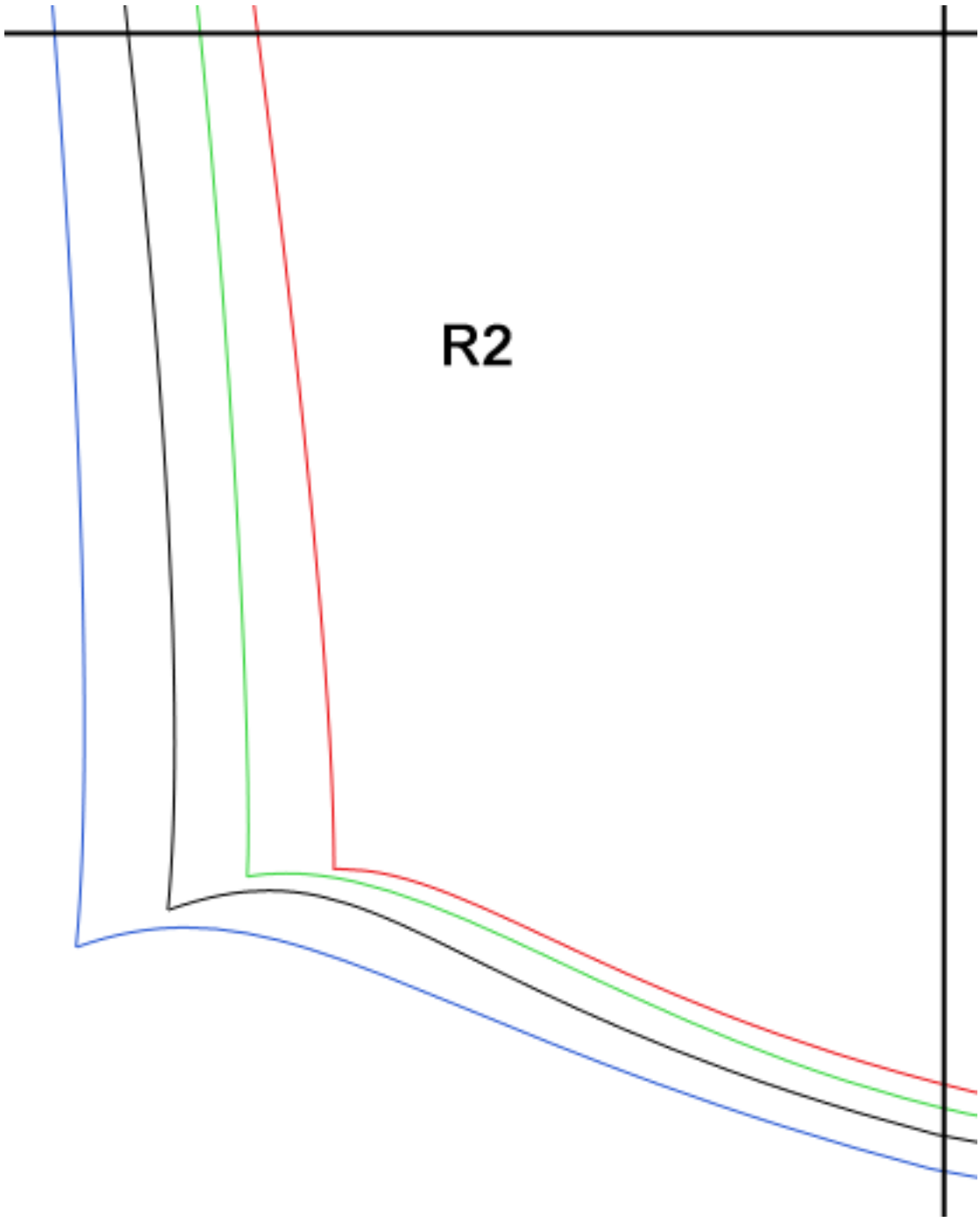
## Größen

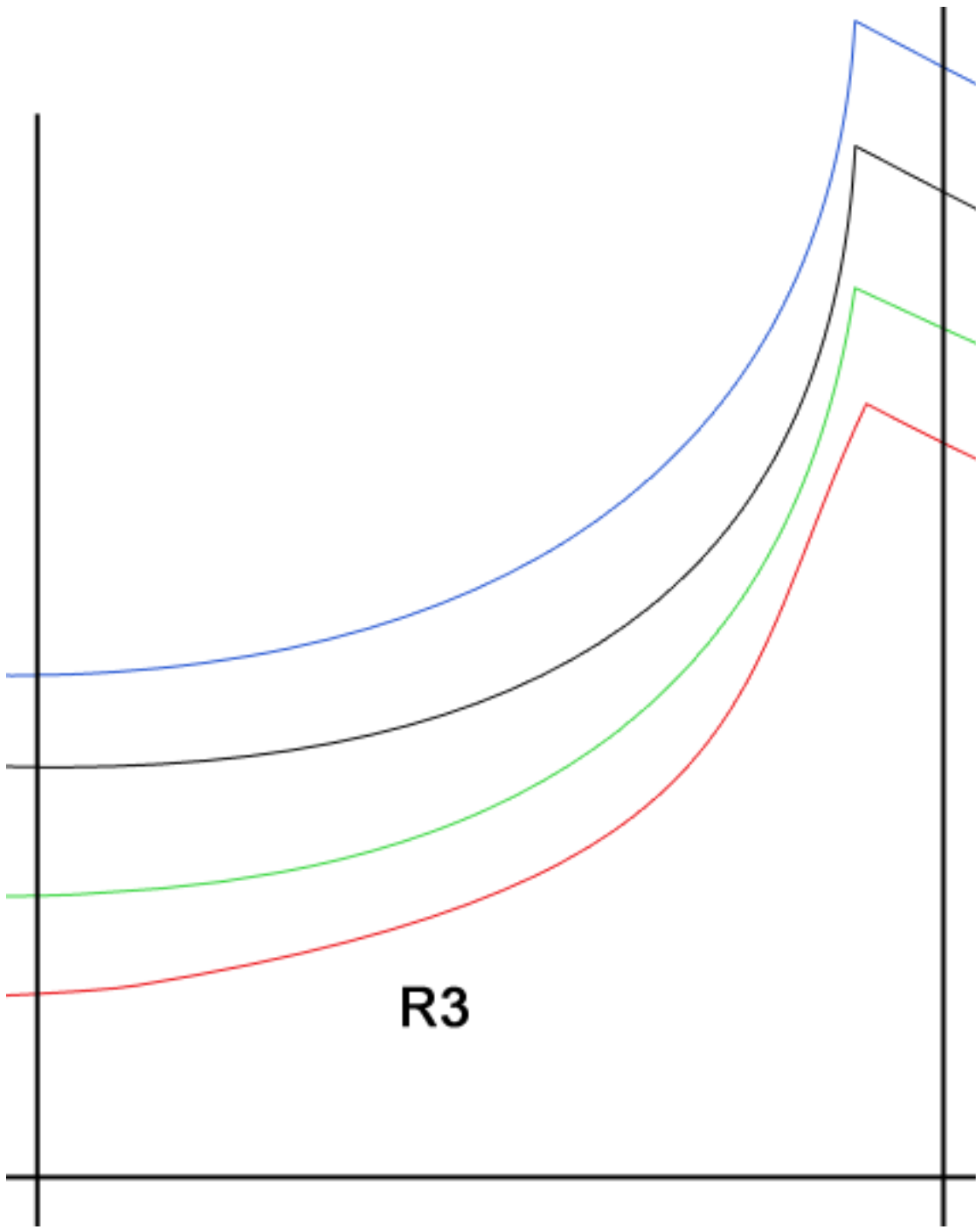
- Rot = S
- Grün = M
- Schwarz = L
- Blau = XL

## Schnittübersicht

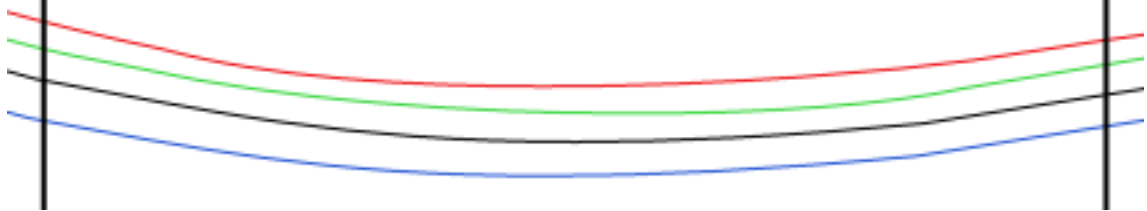


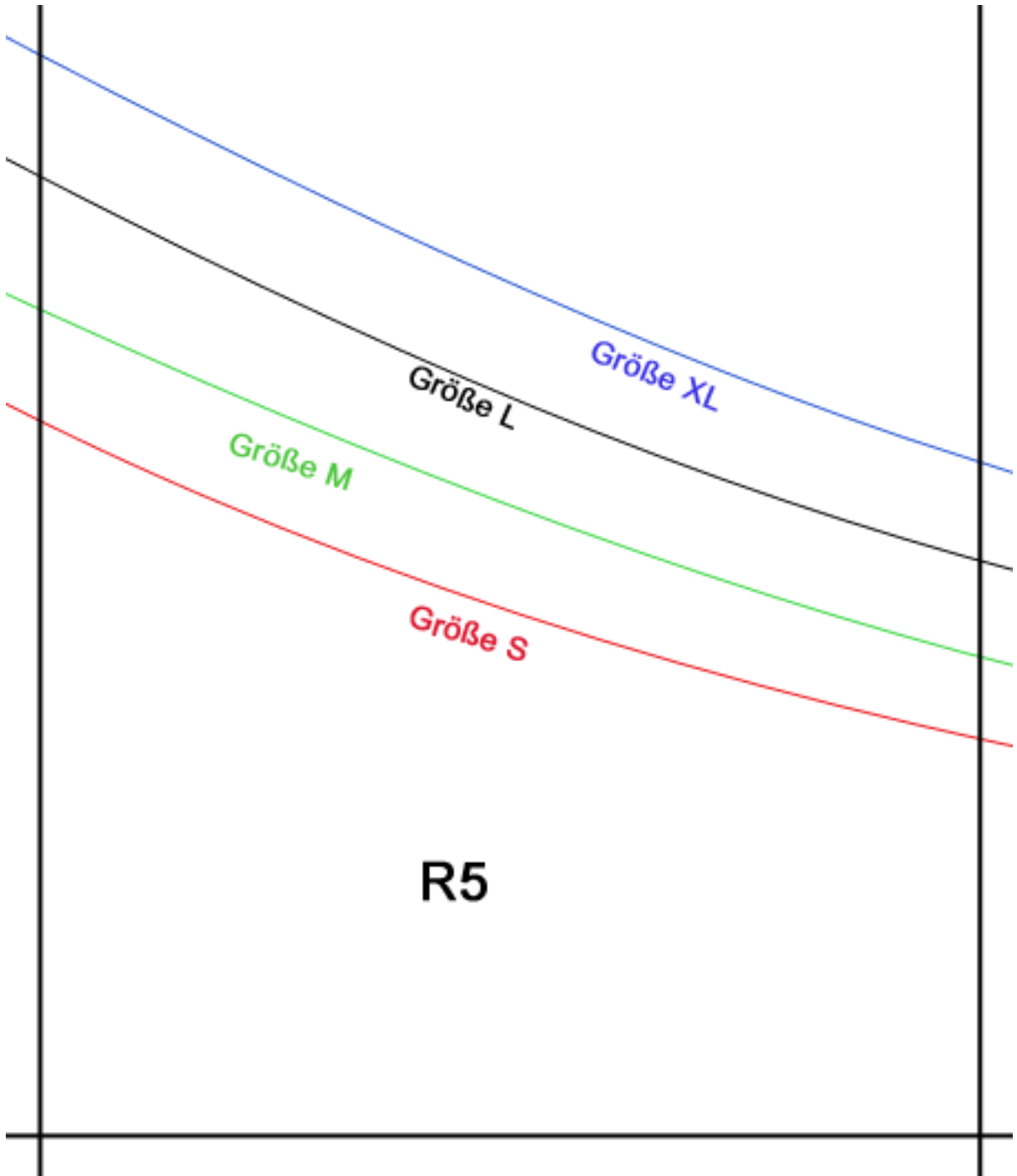






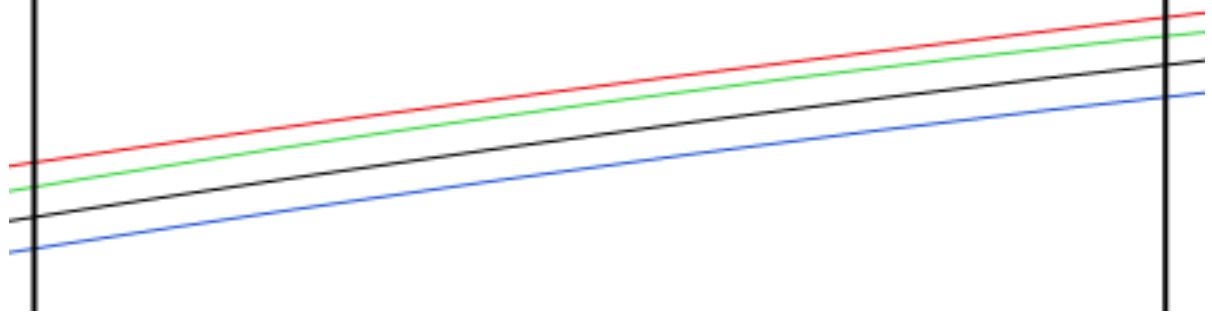
R4

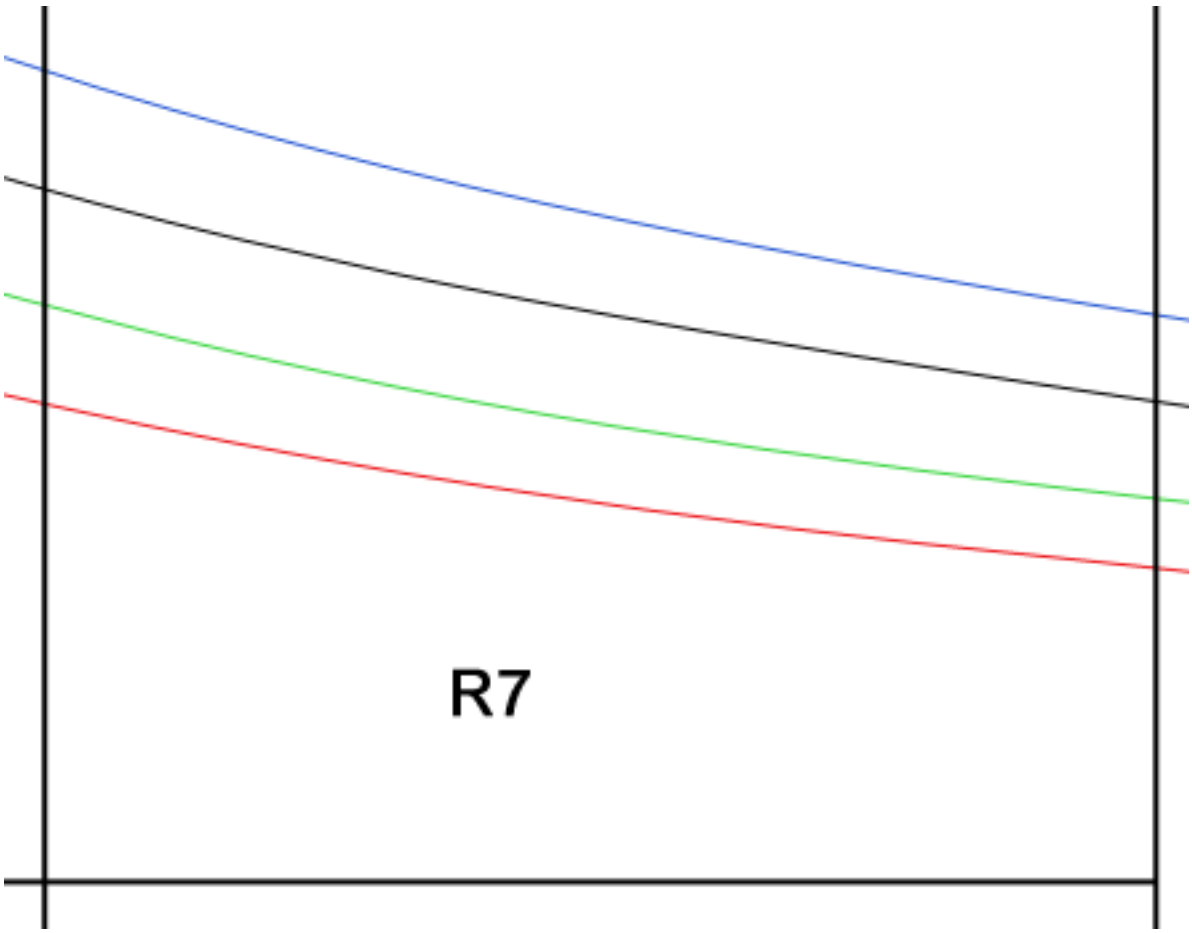




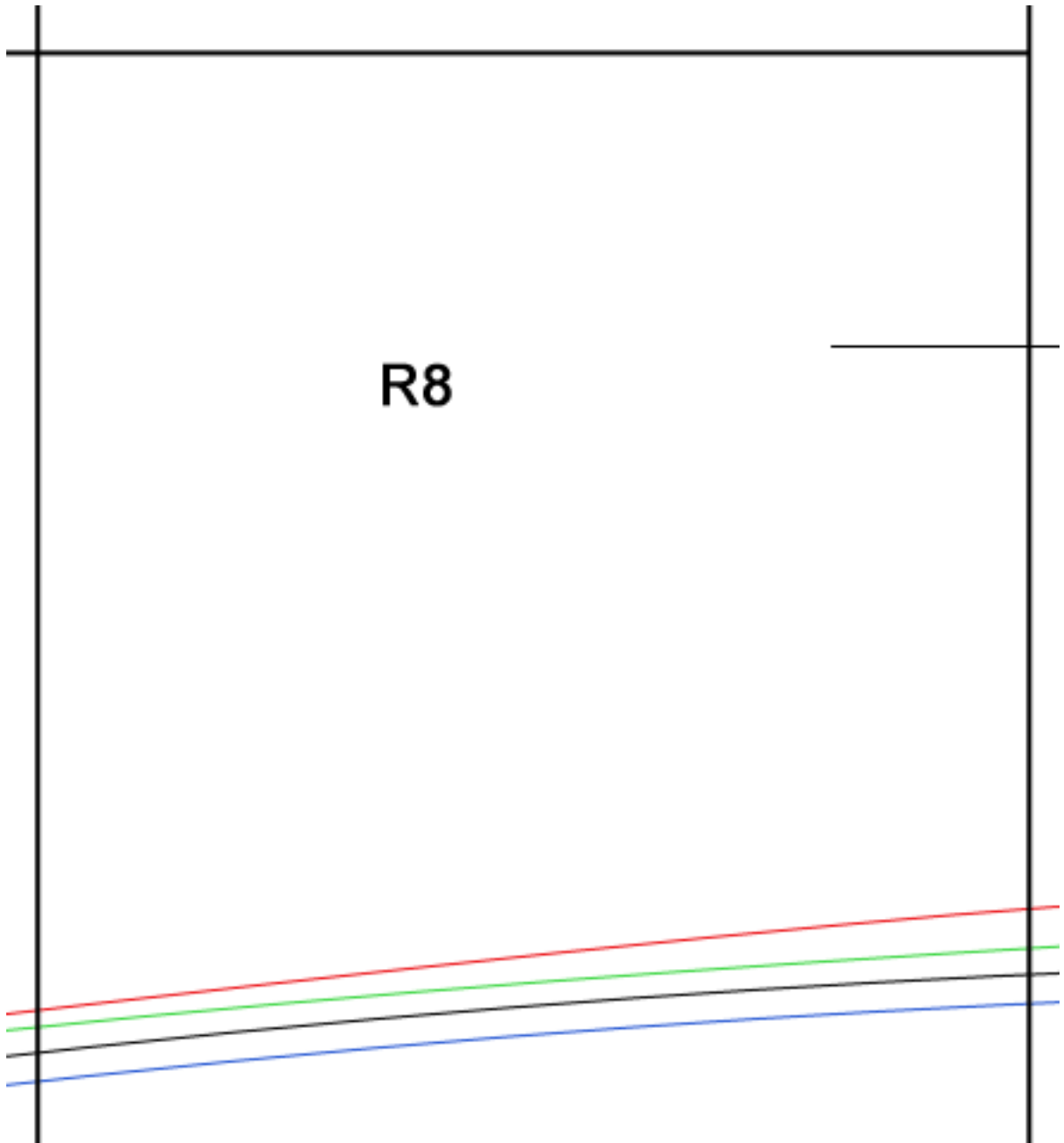
# Jerseyhose Rückseite

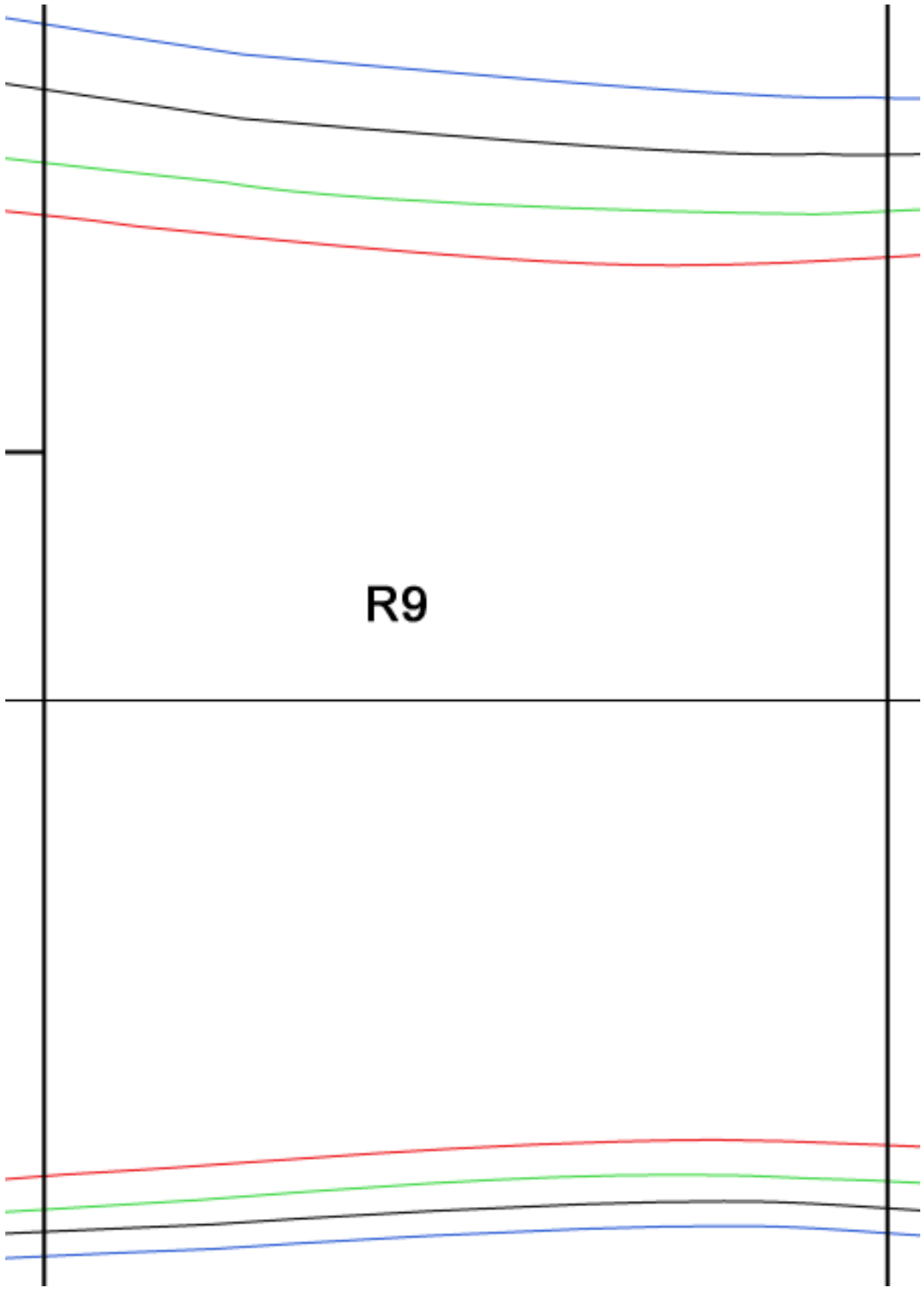
R6

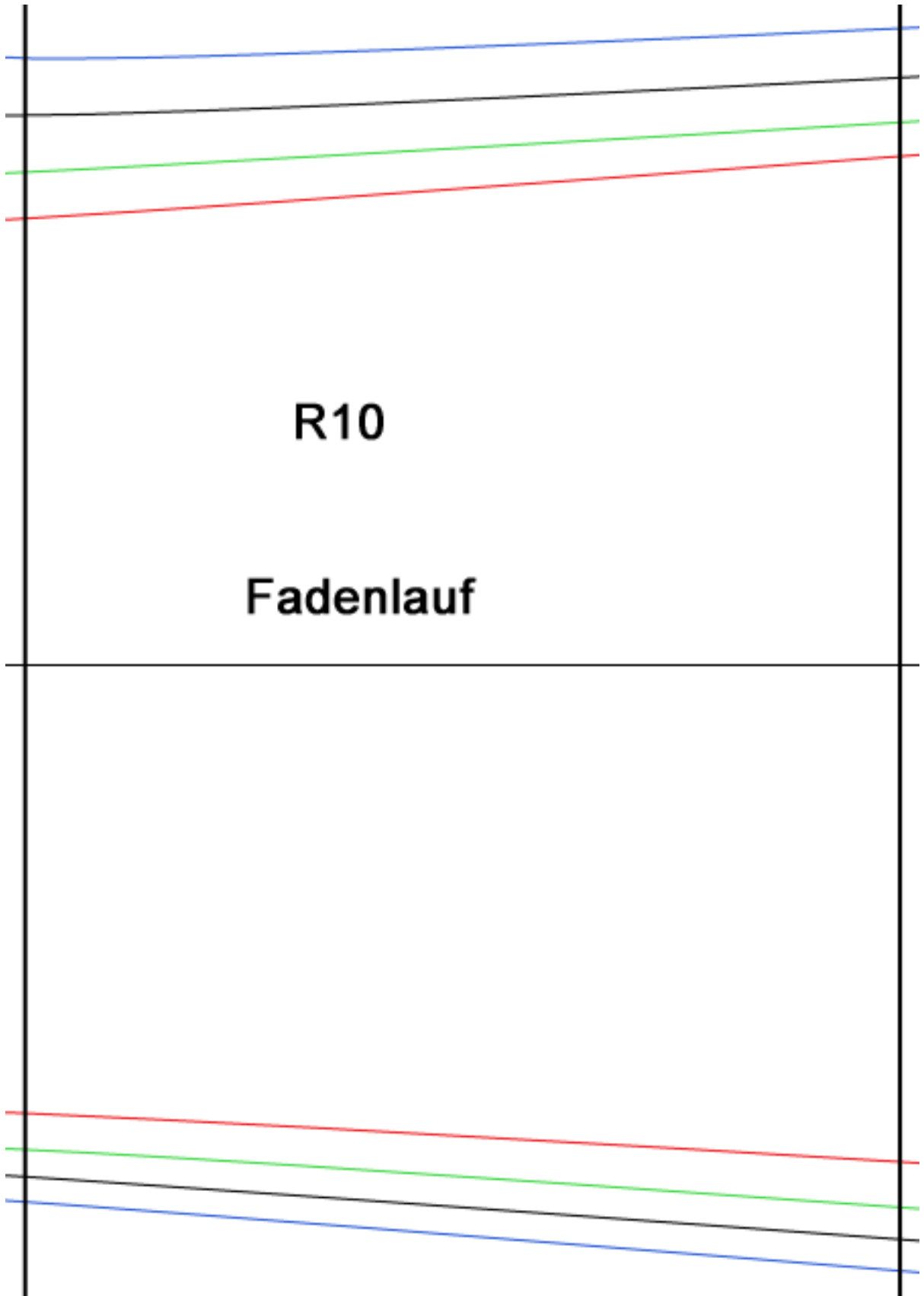


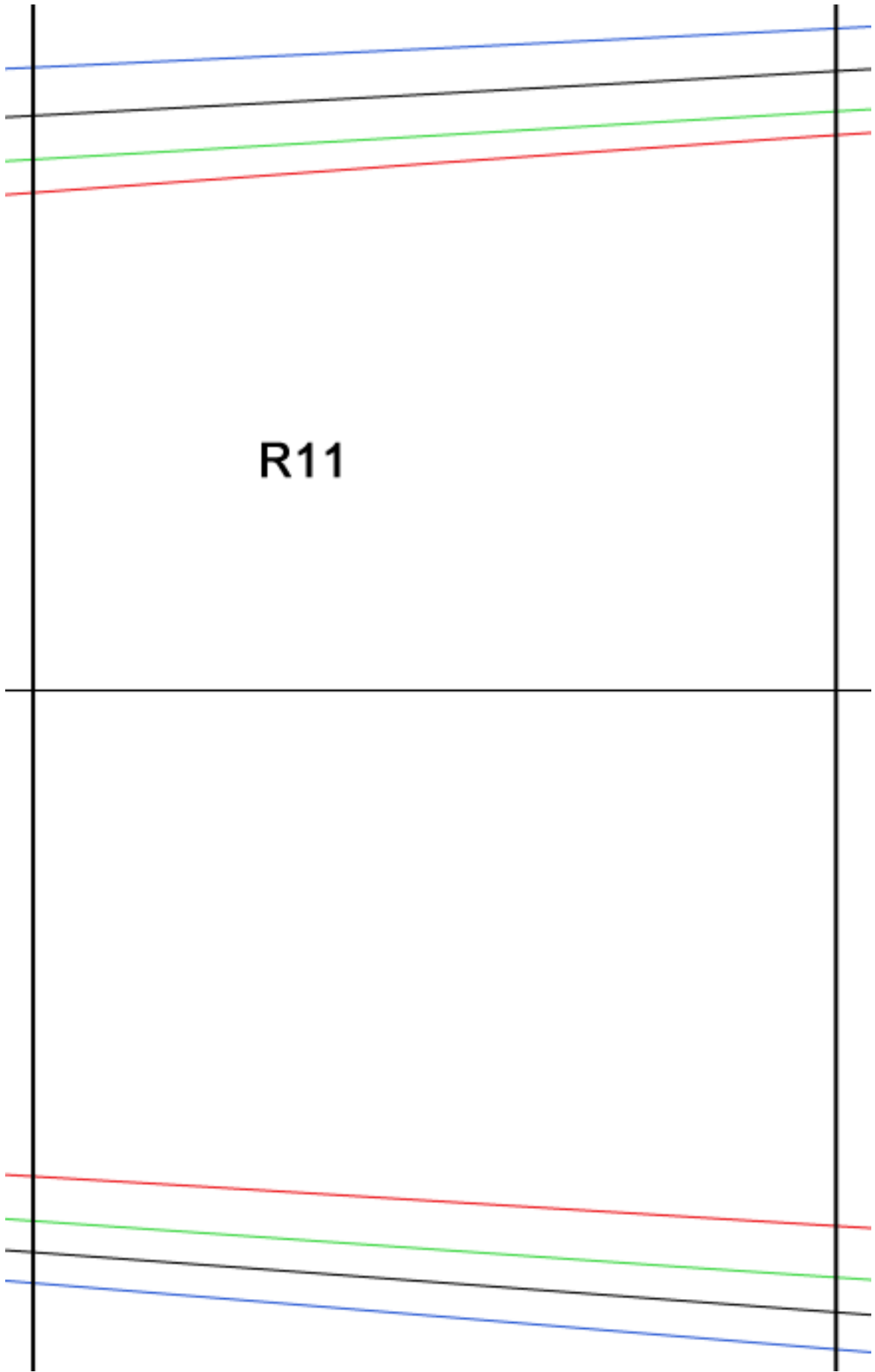




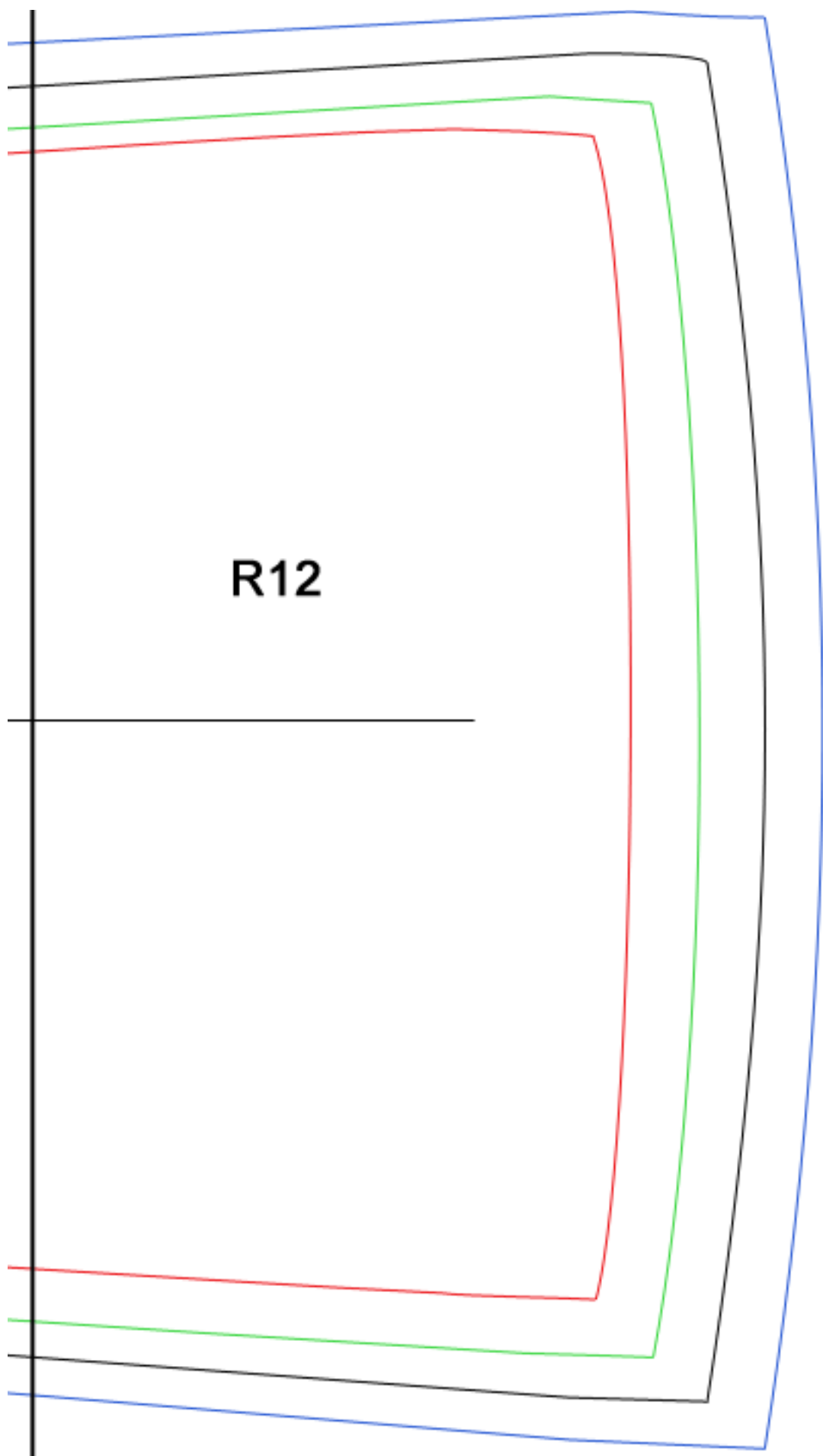




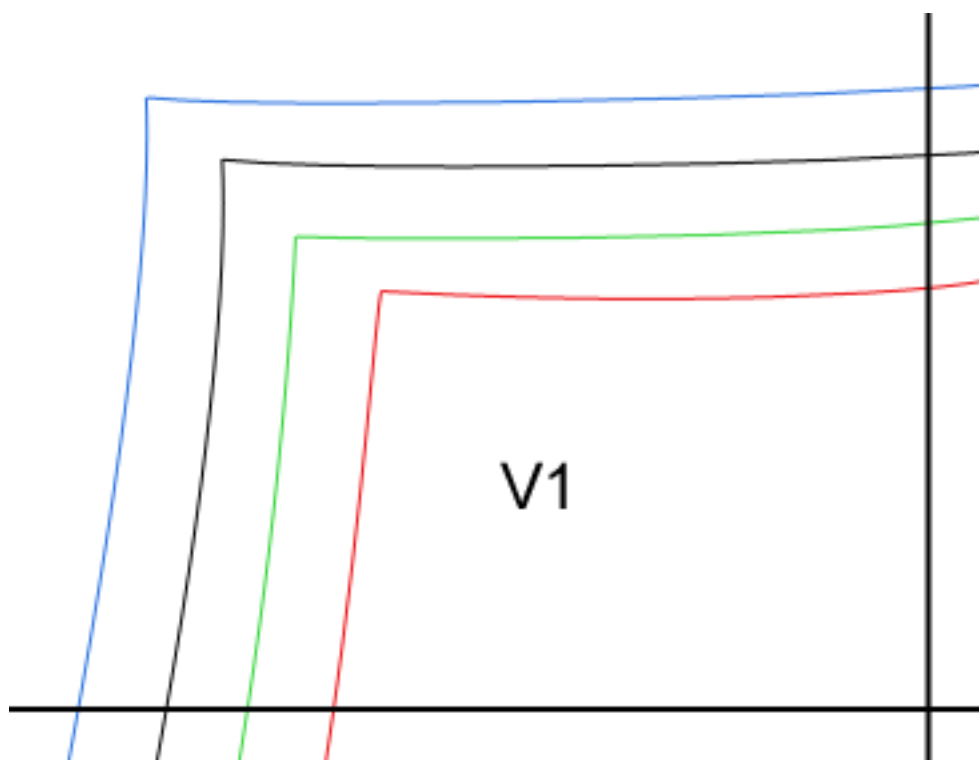


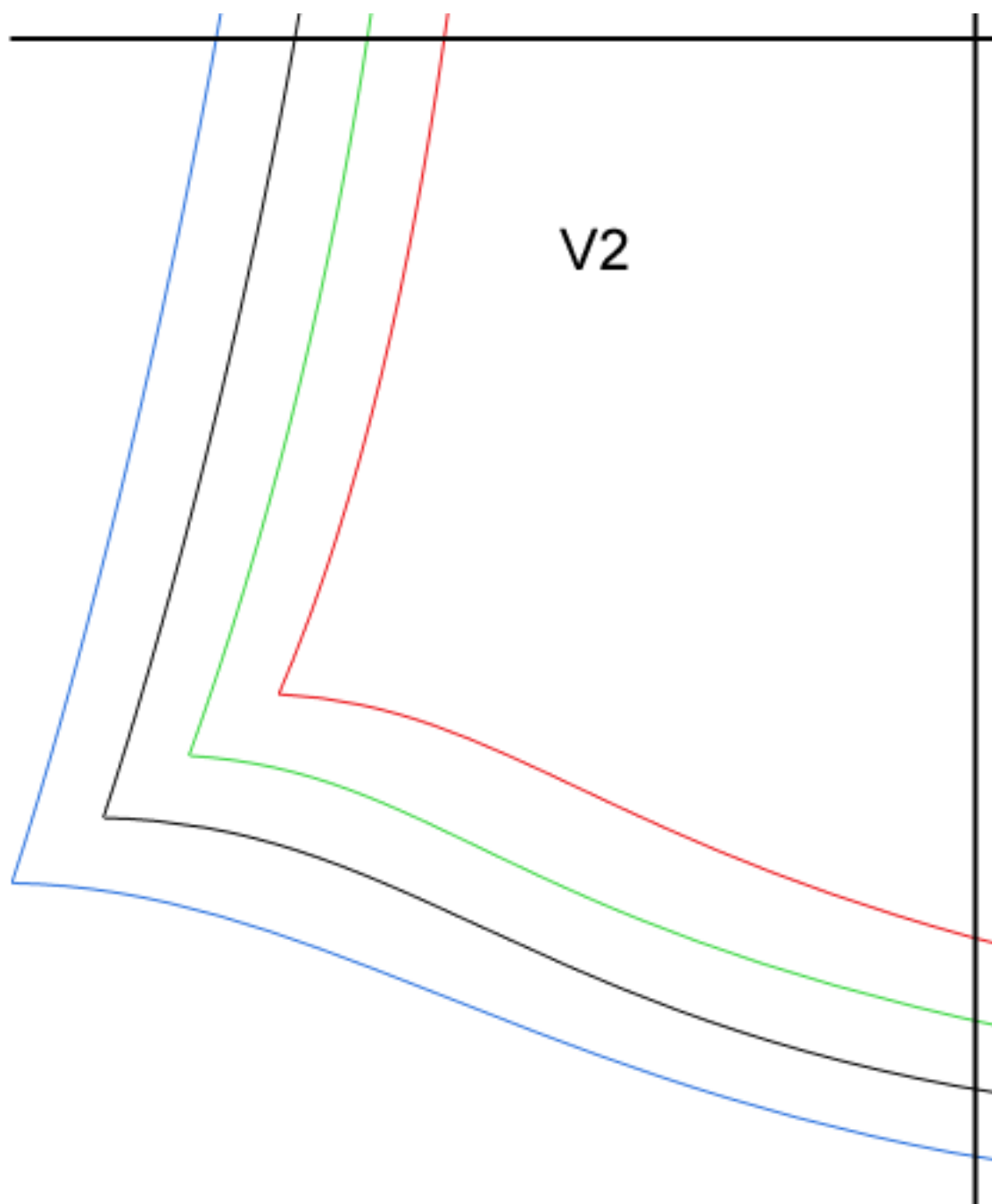


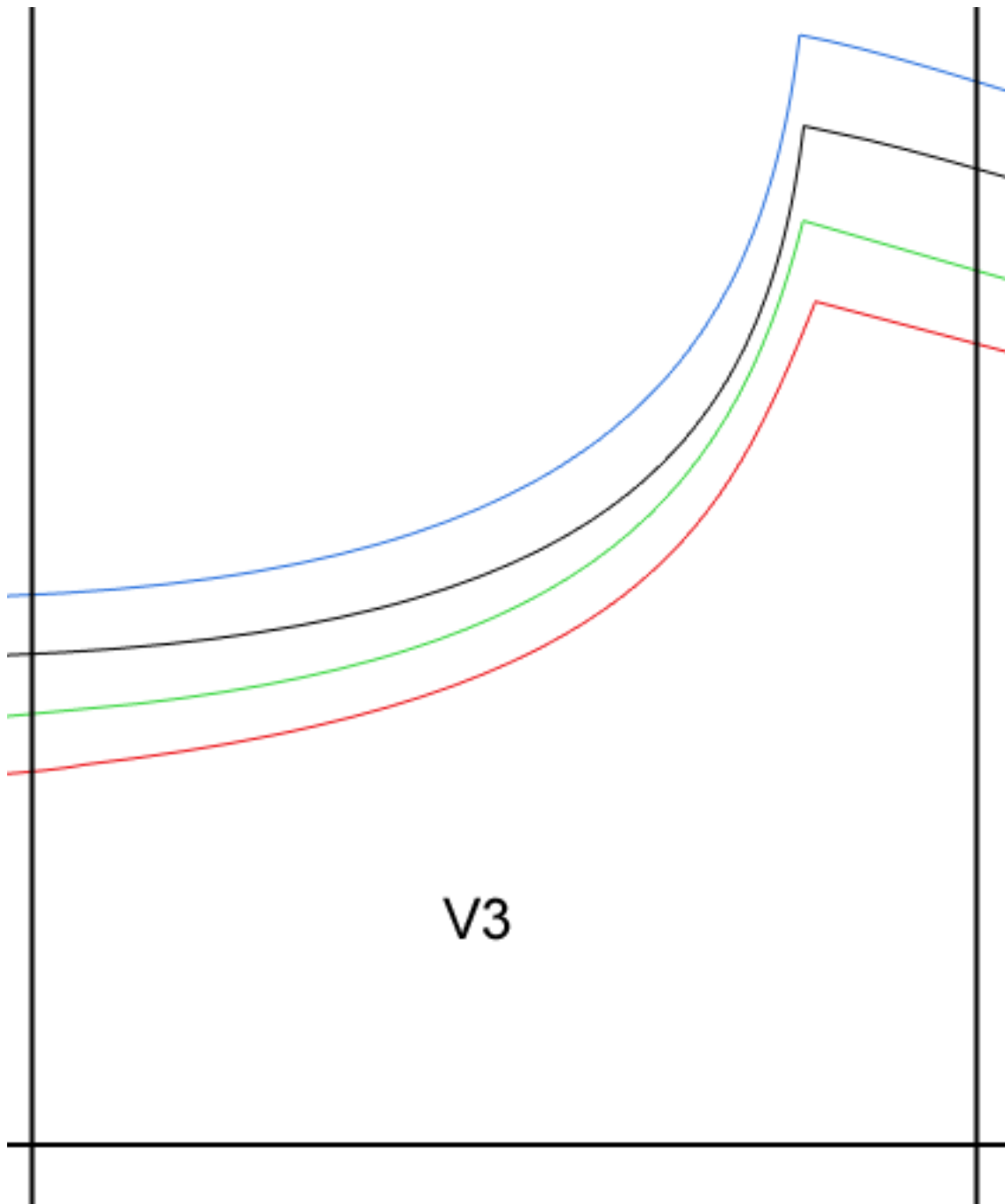
R11



R12

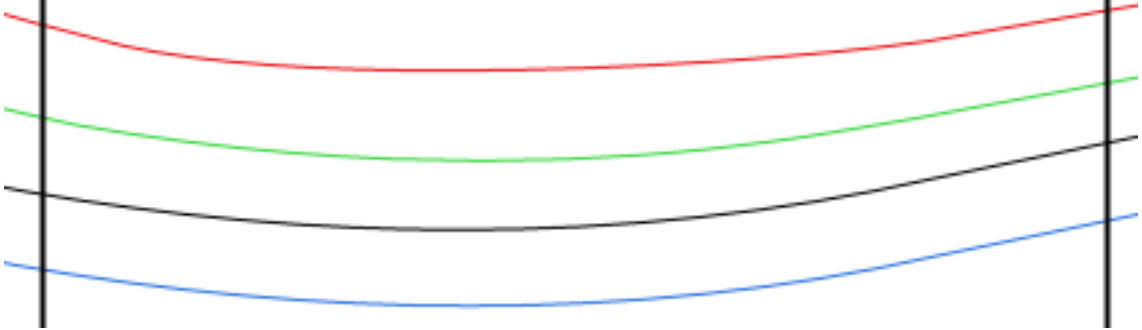


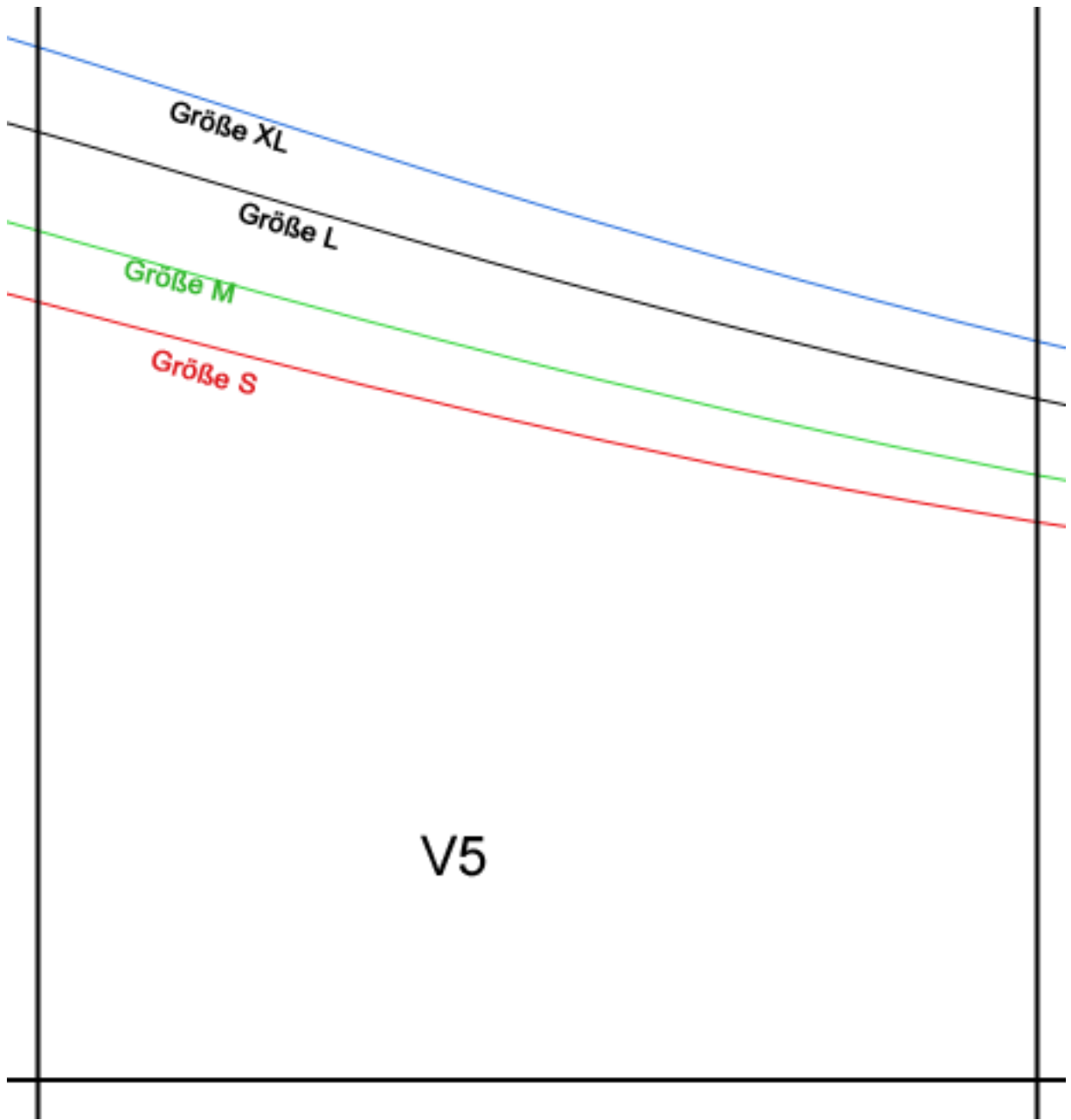




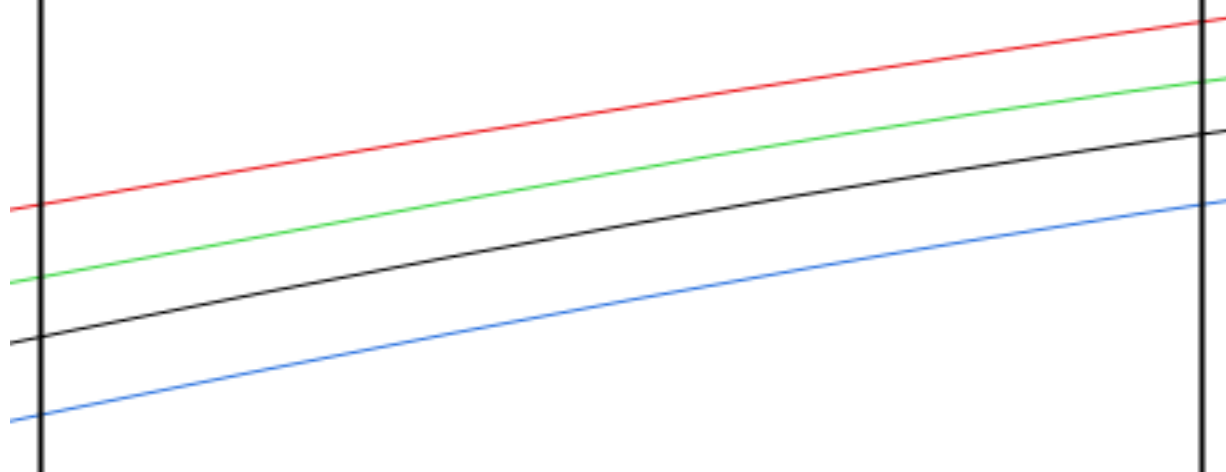


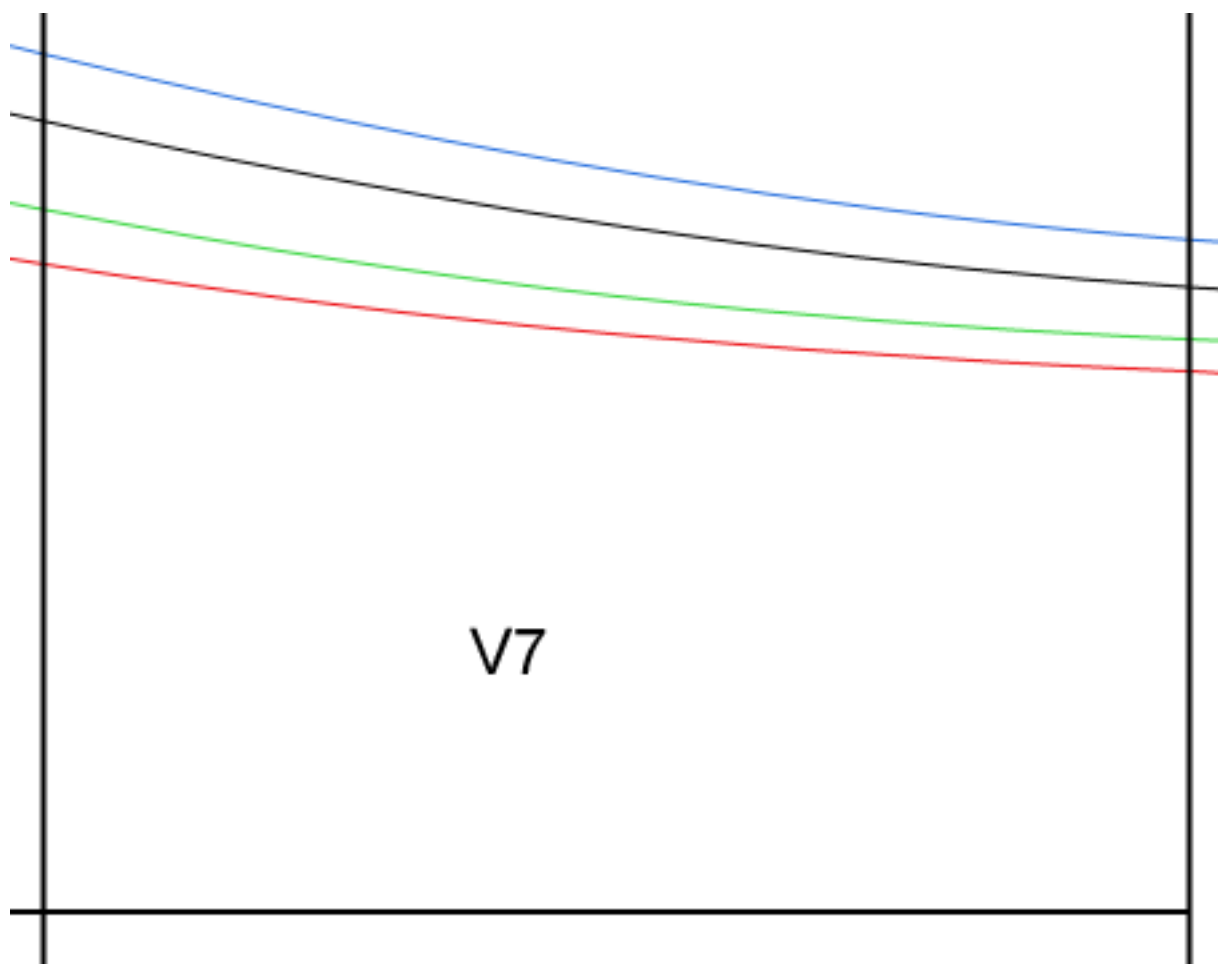
V4





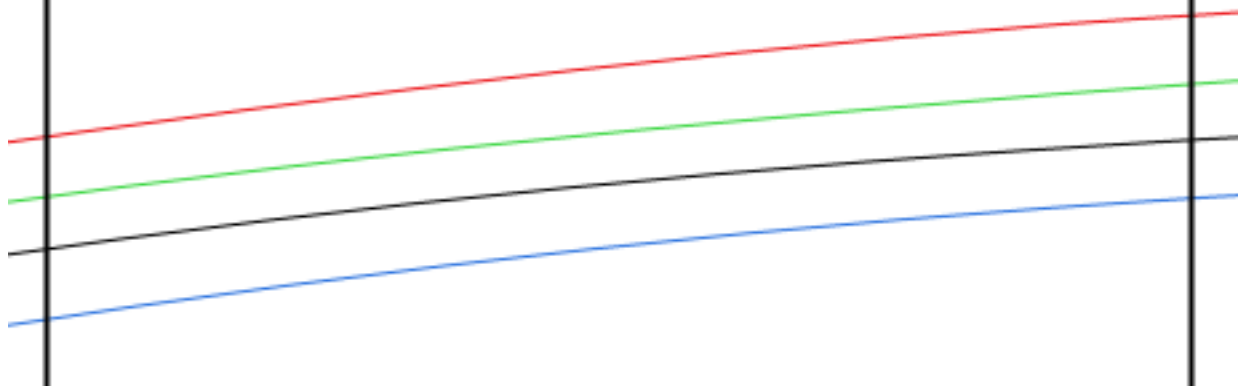
V6

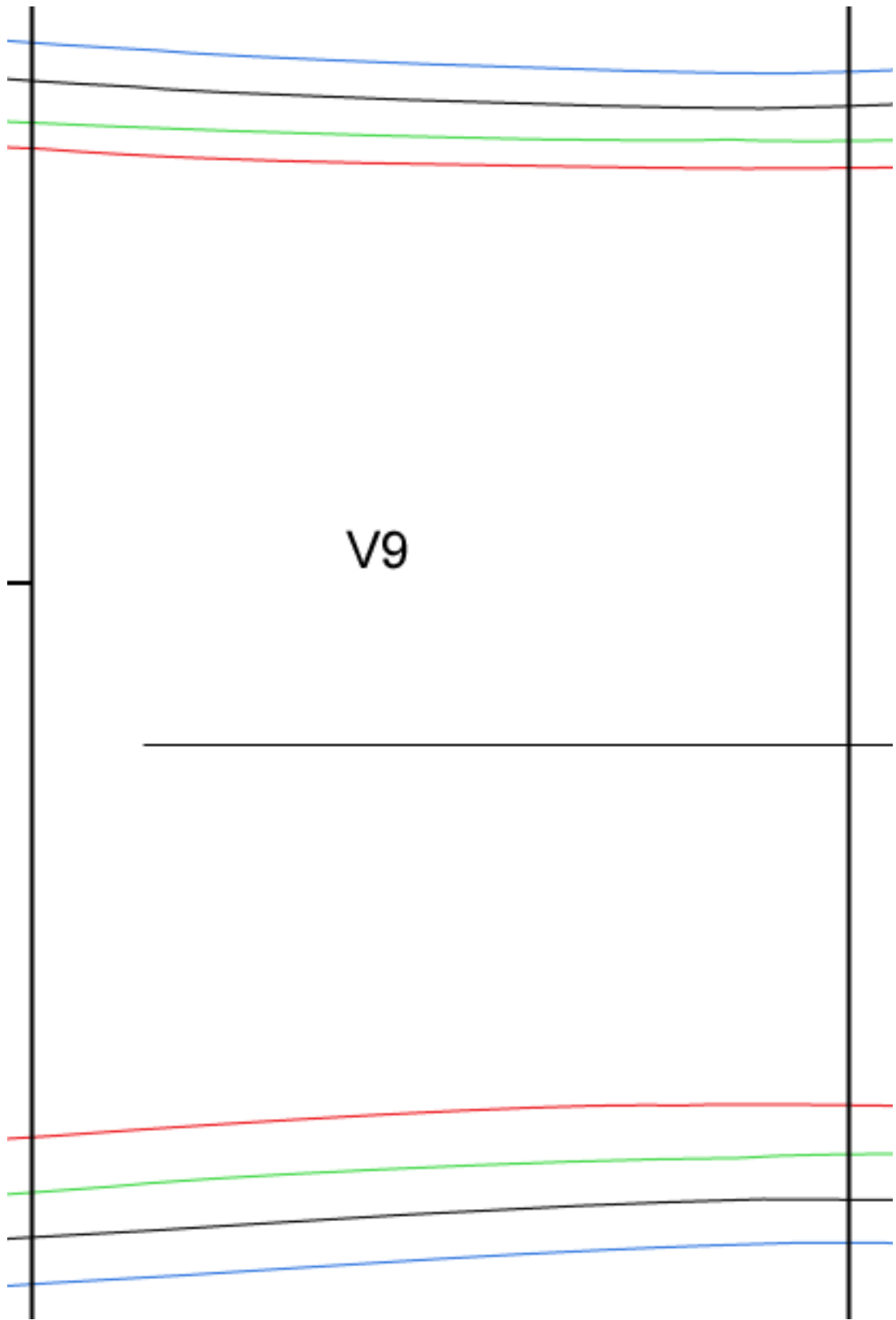




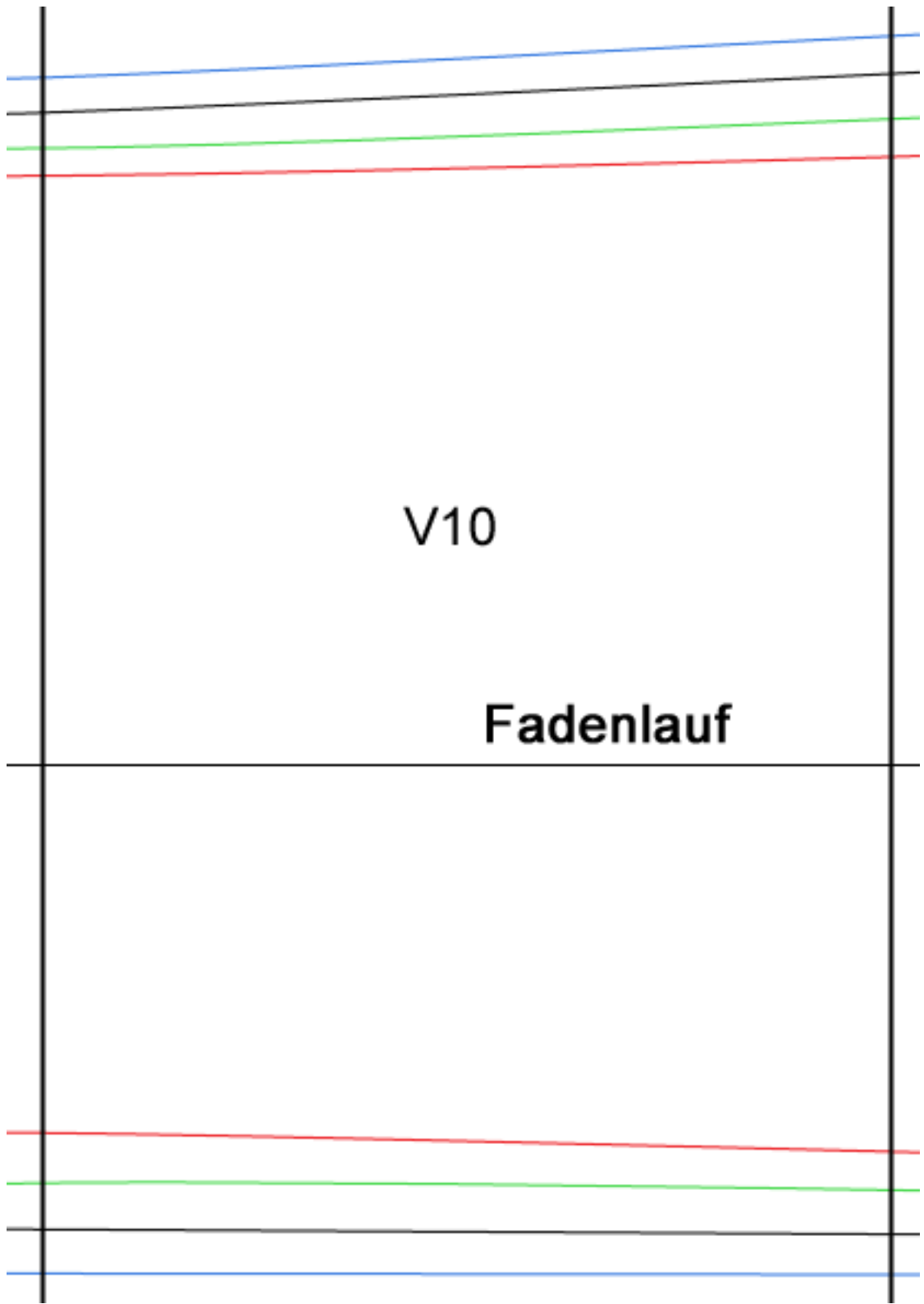
V8

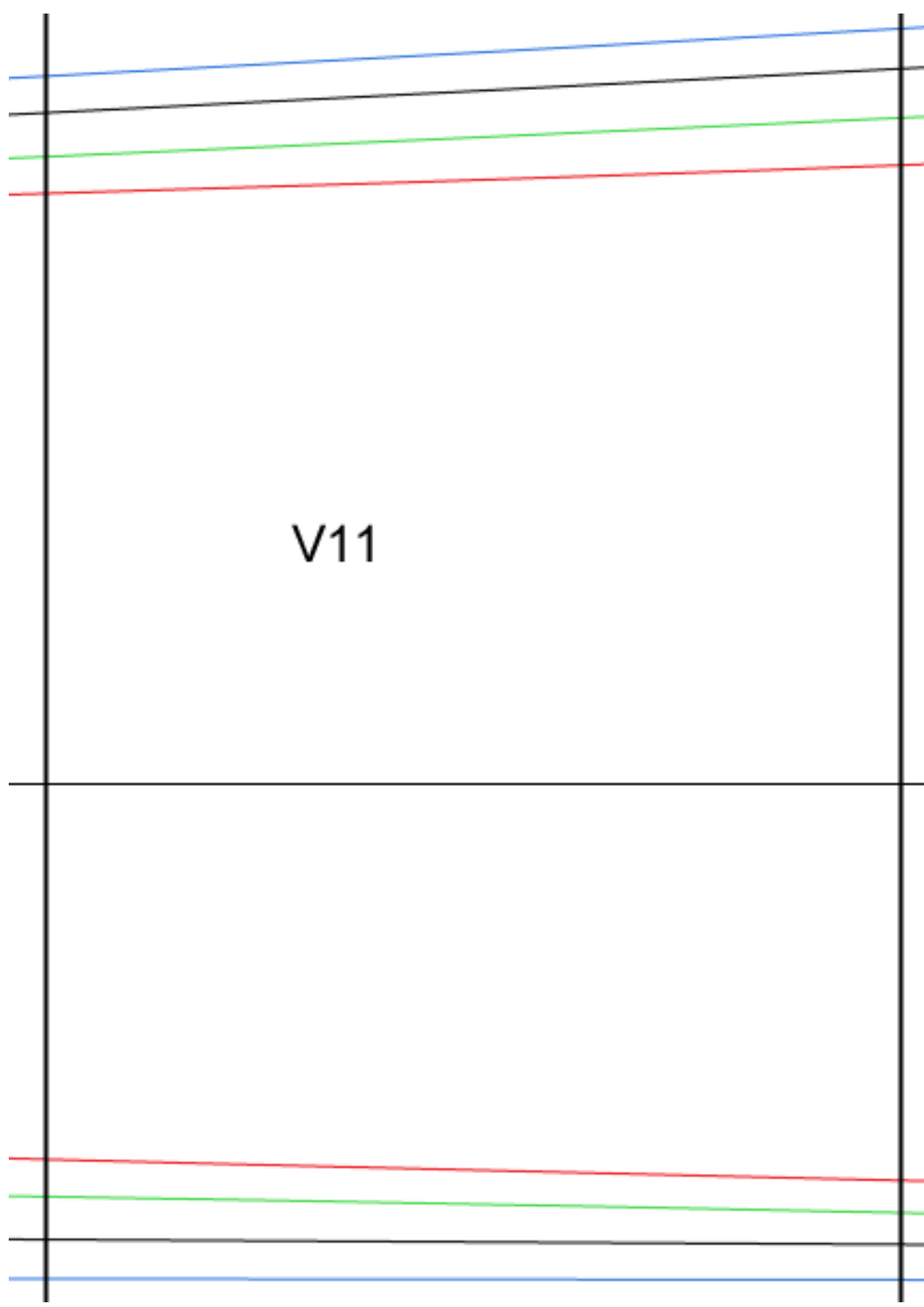
## Jerseyhose Vorderseite





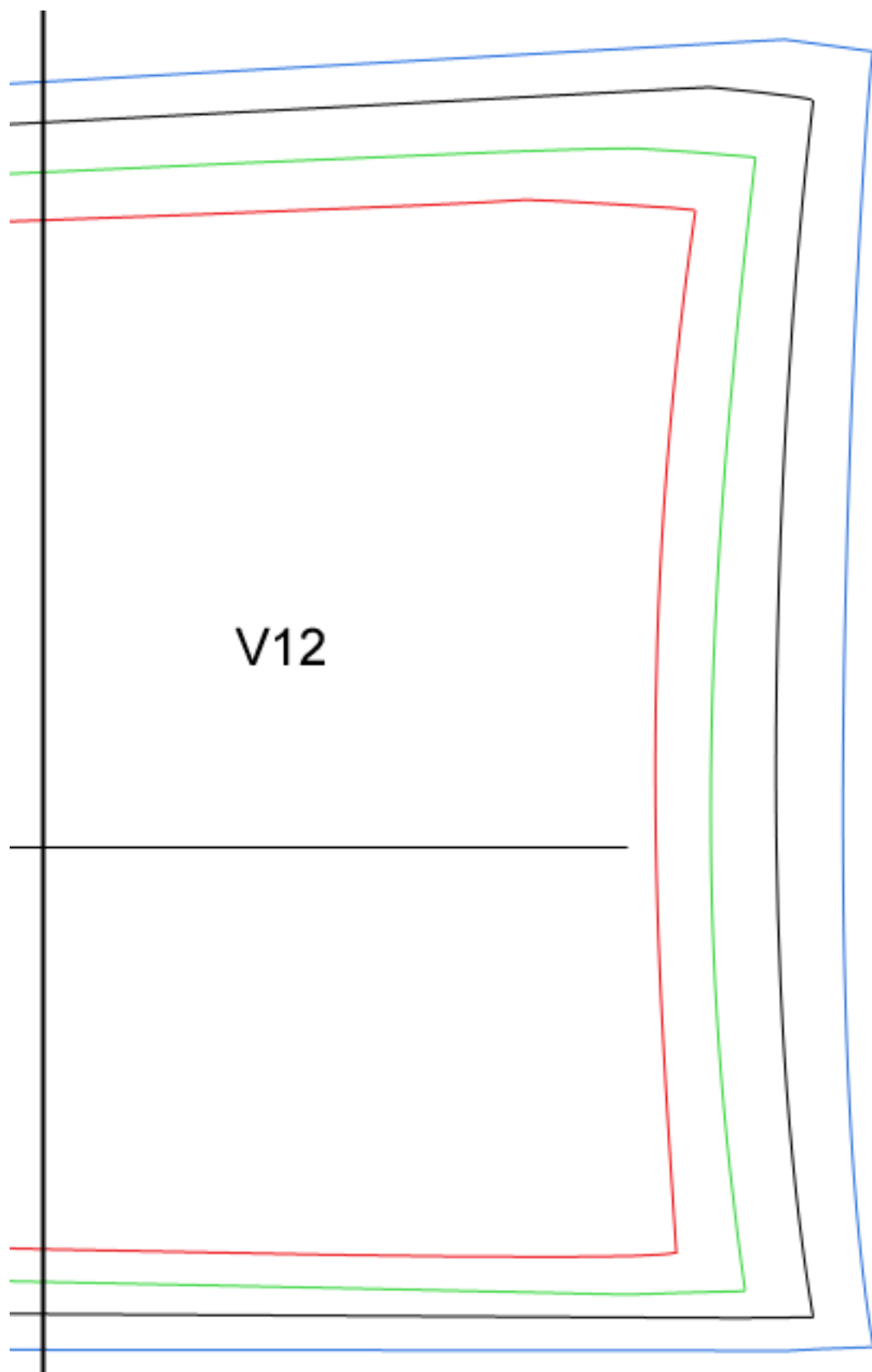
V9



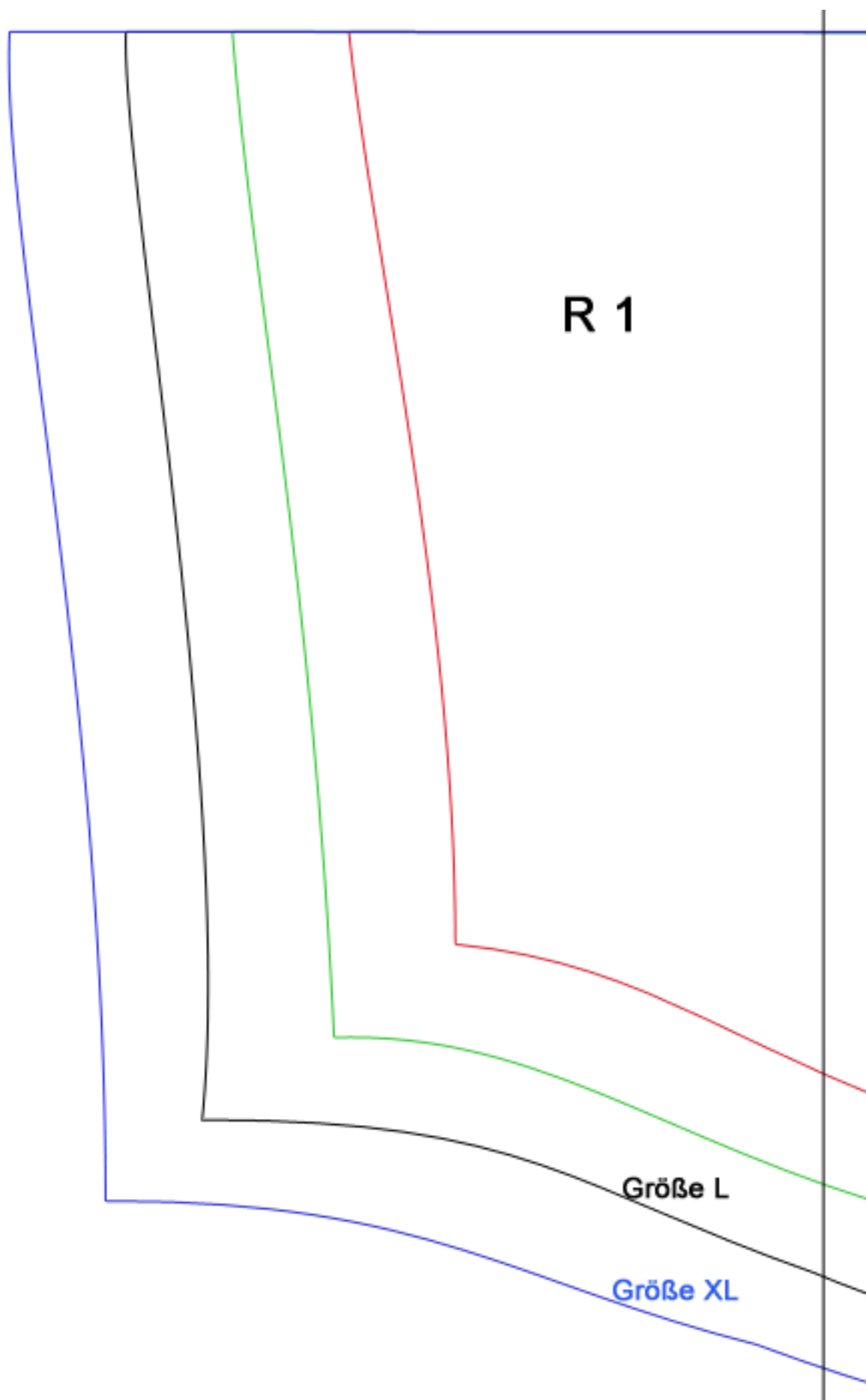


V11





V12



R 1

Größe L

Größe XL

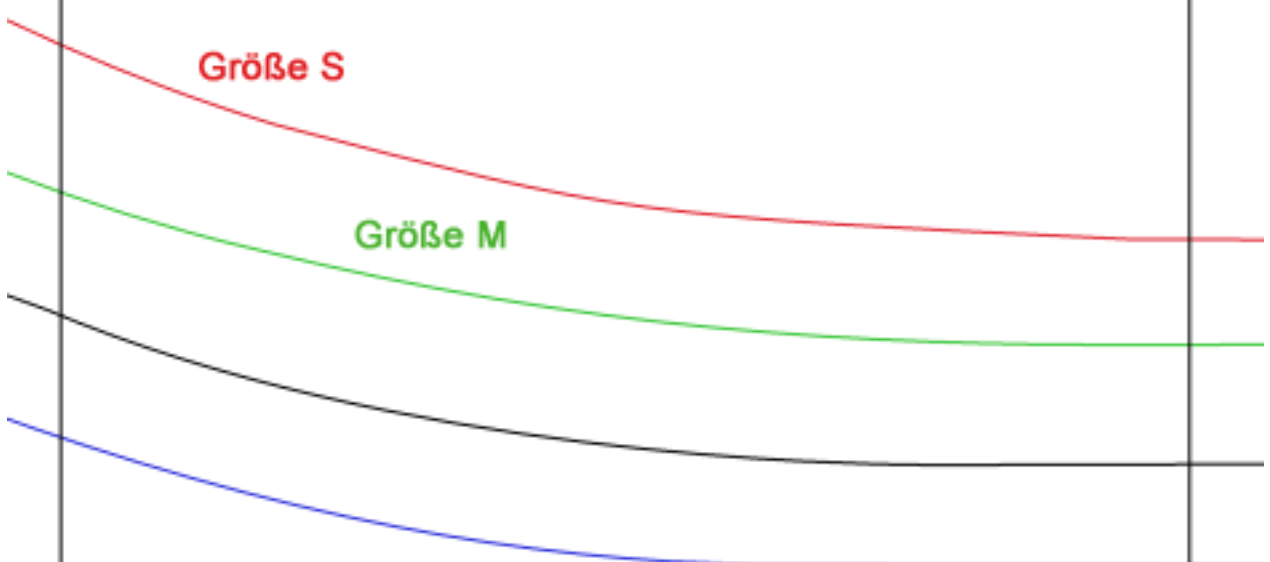
Stoffbruch - Fadenlauf

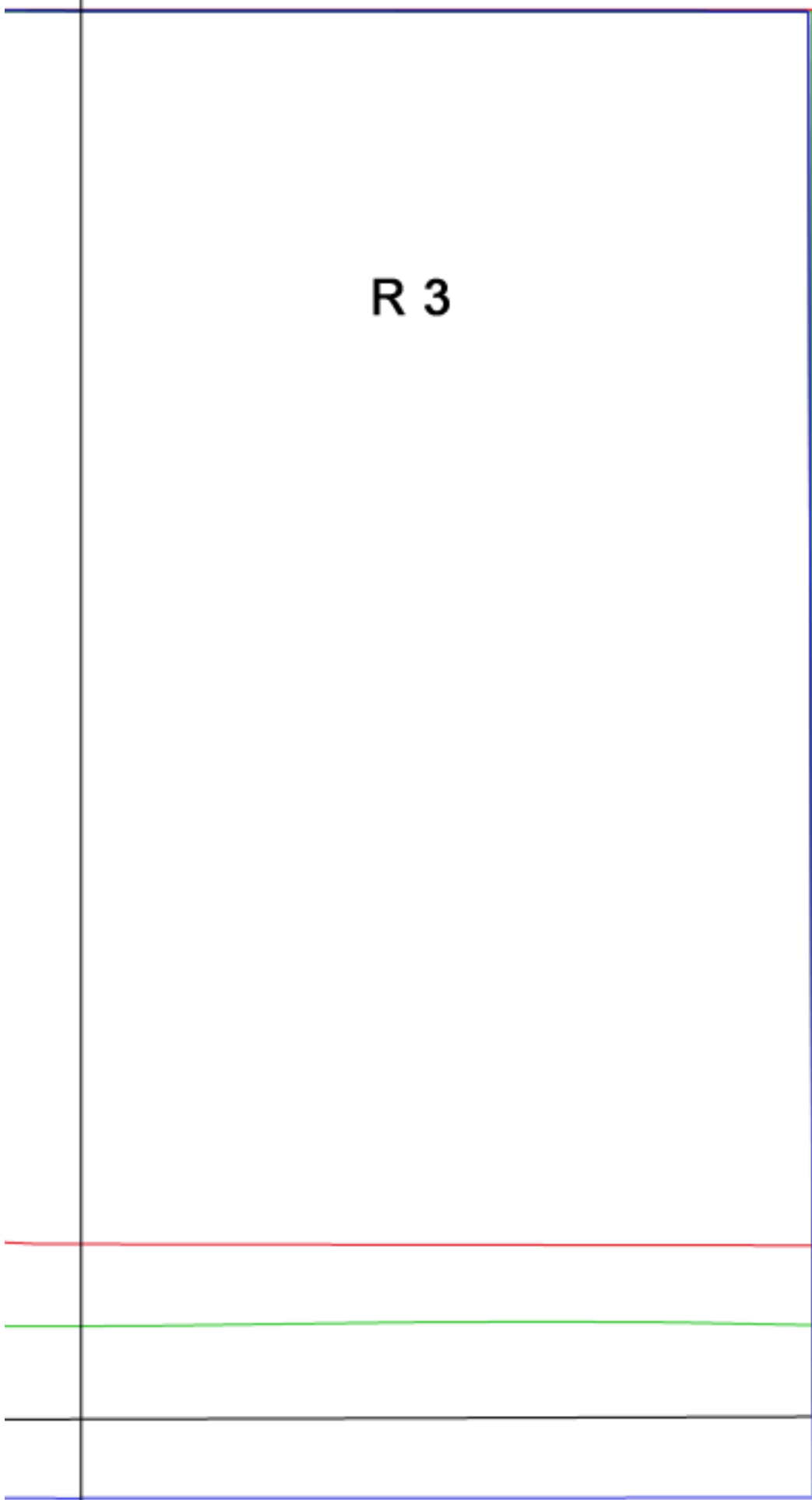
R 2

Jerseyrock  
Rückseite

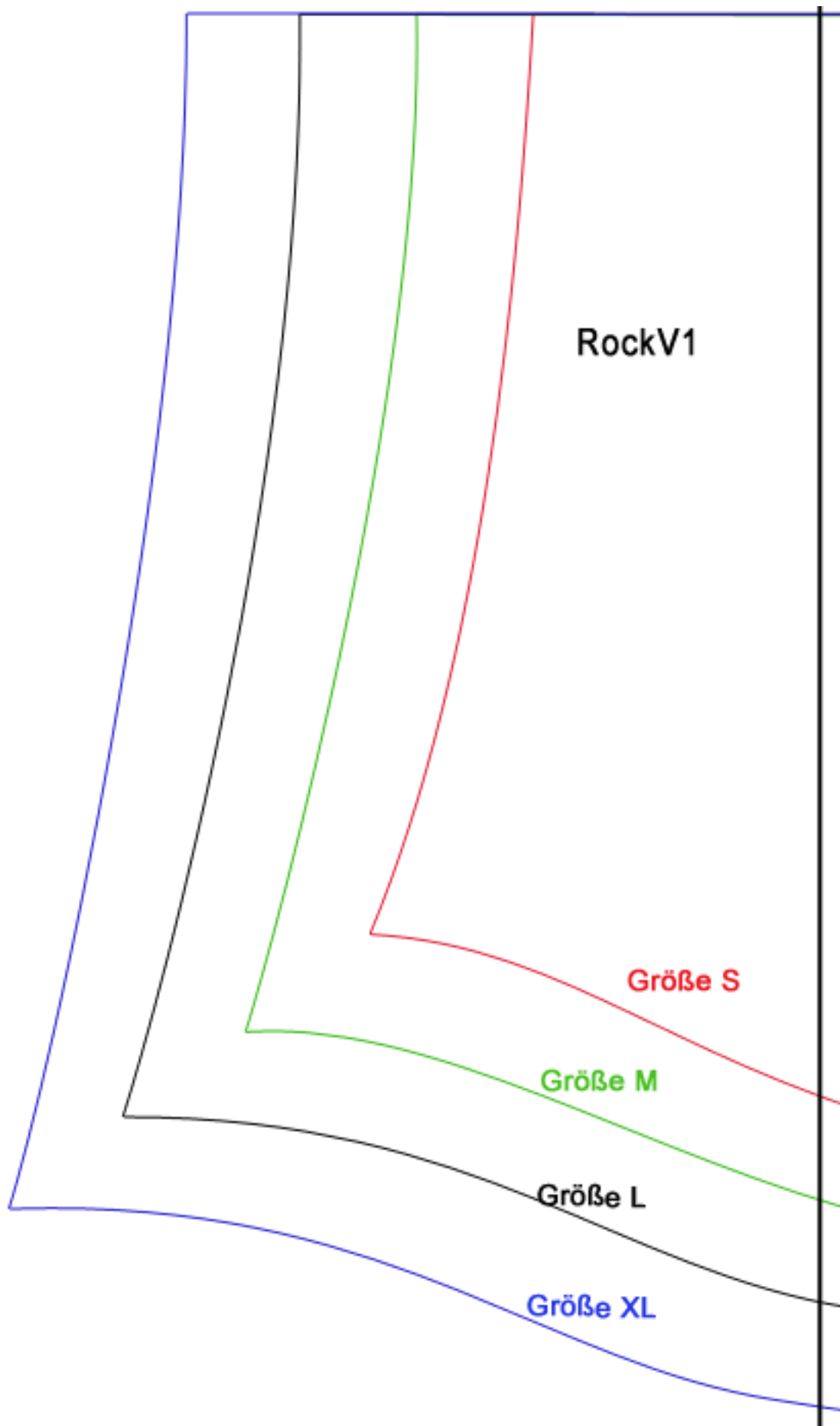
Größe S

Größe M





**R 3**



Stoffbruch - Fadenlauf

RockV2

Jerseyrock  
Vorderseite

