

# Verflixt und Zugenäht

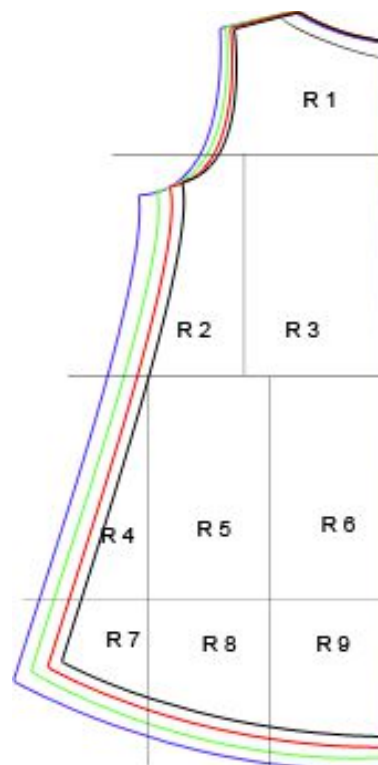
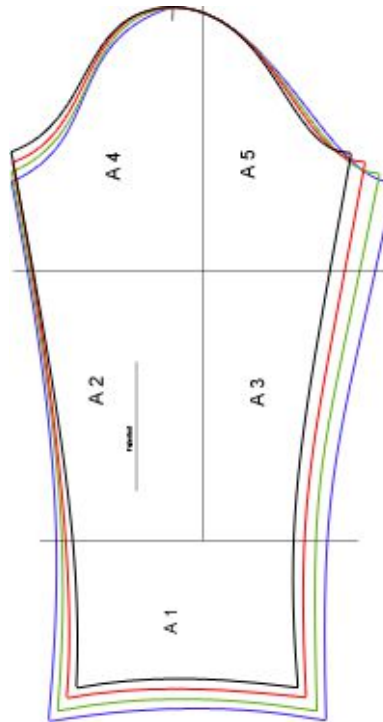
[www.schneidern-naehen.de](http://www.schneidern-naehen.de)

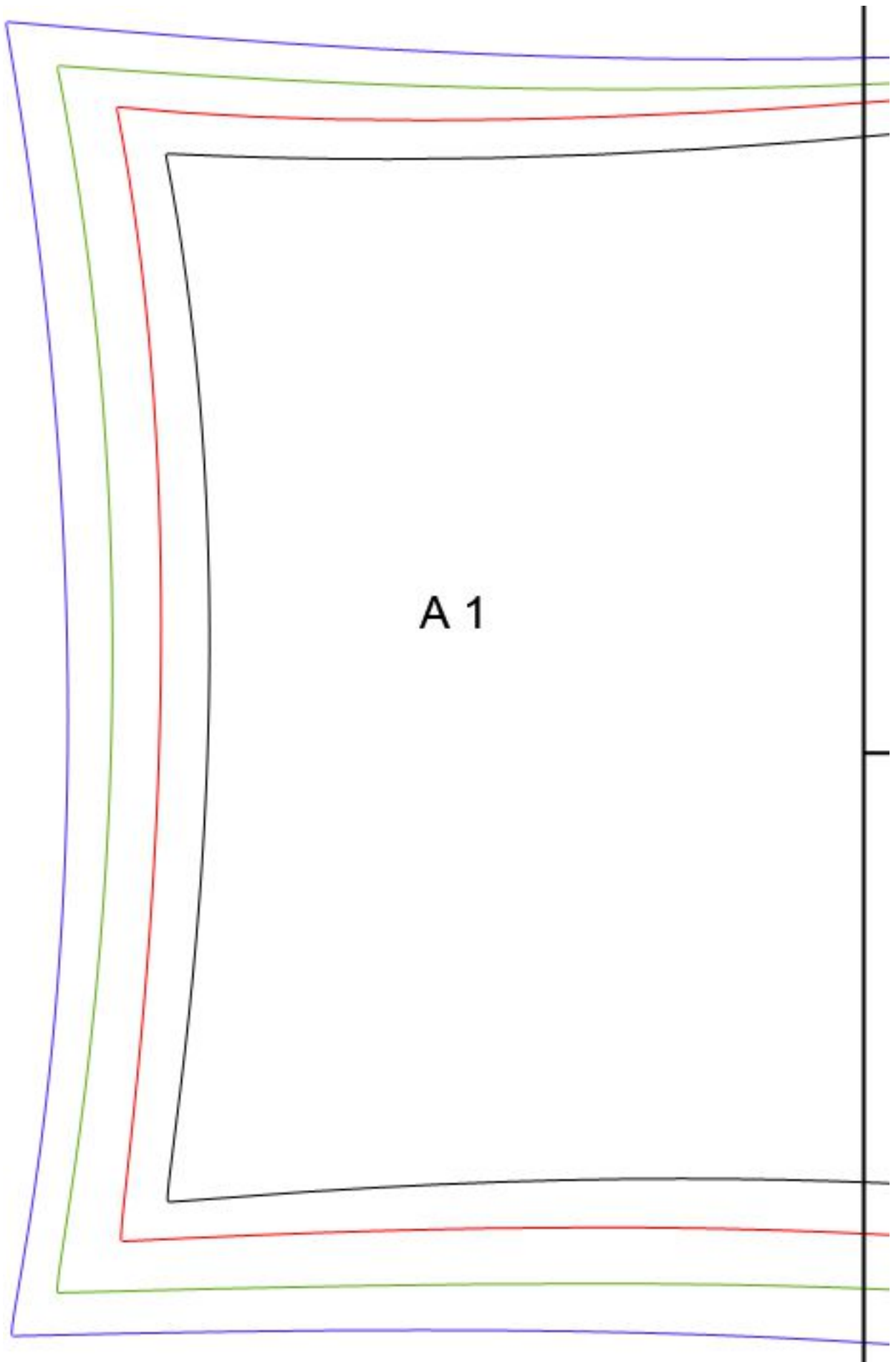
## Schnittmuster – Tunika in Glockenform

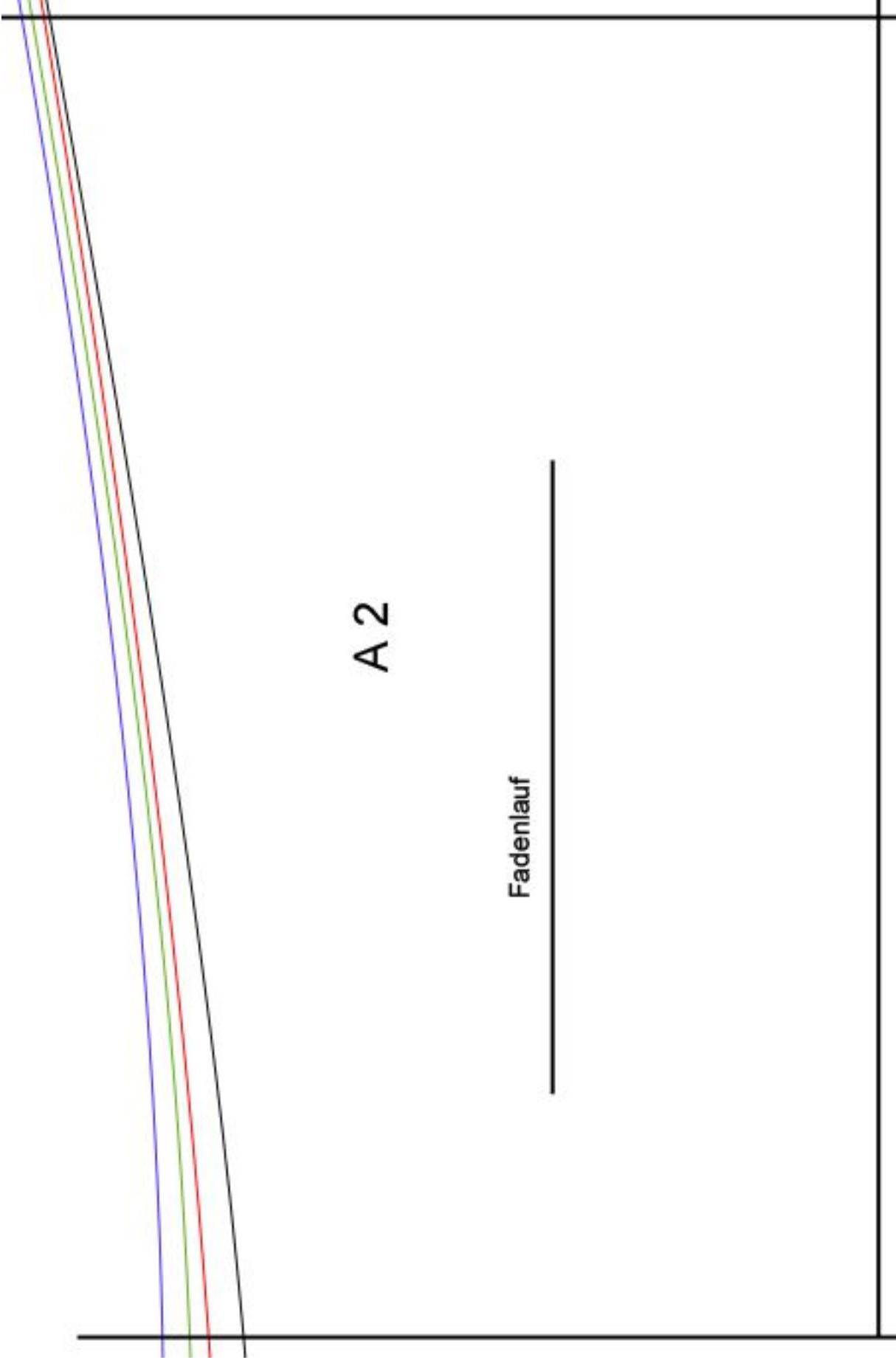
Drucken Sie das Schnittmuster aus. **Seitengröße beibehalten, nicht an Seitengröße anpassen.**

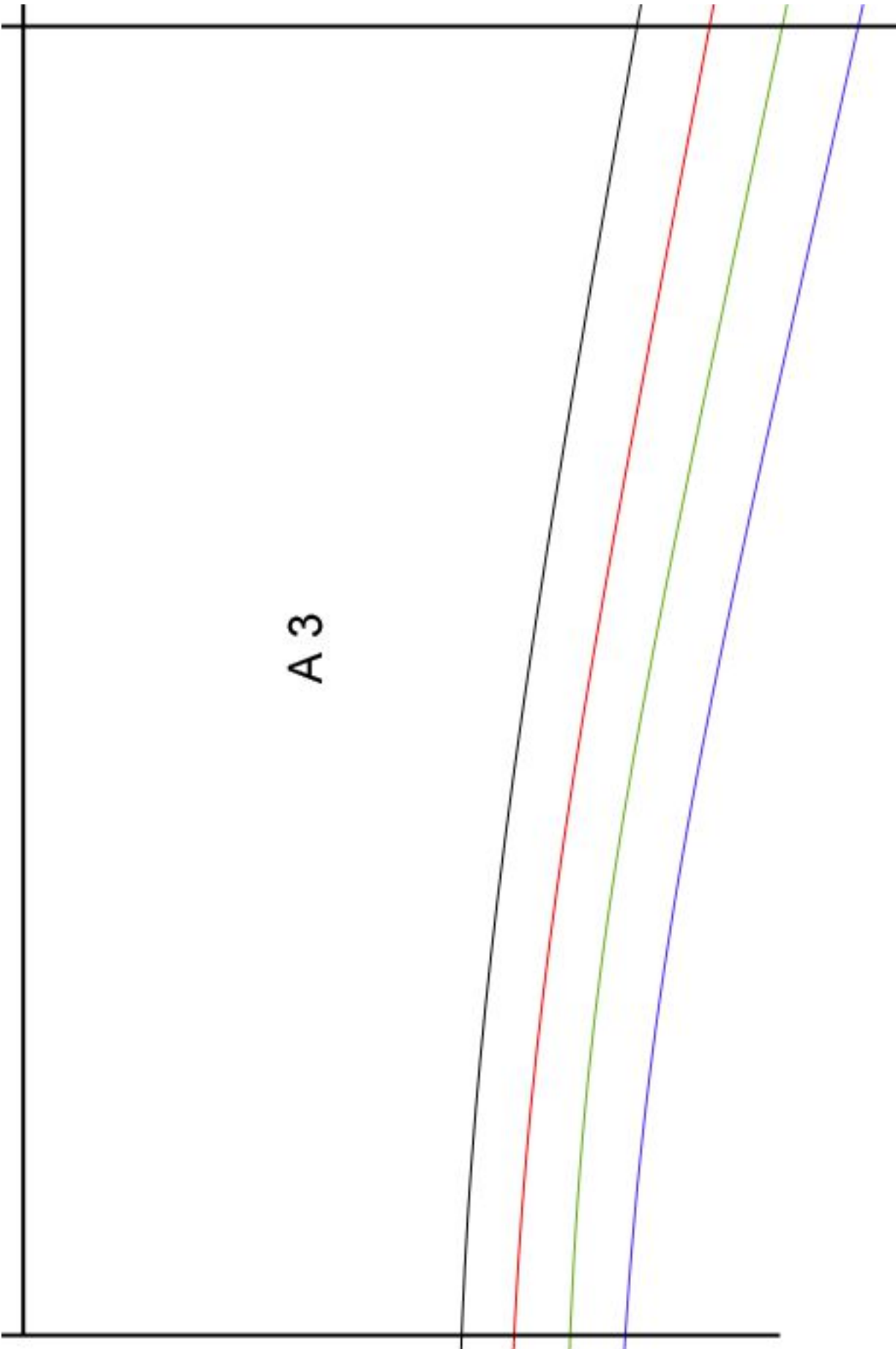
Kleben Sie die Schnittteile an den schwarzen Linien zusammen. Die Linien treffen aufeinander. Schneiden Sie dann das Schnittmuster in ihrer Größe aus.

- Schwarz = Größe S
- Rot = Größe M
- Grün = Größe L
- Blau = Größe XL

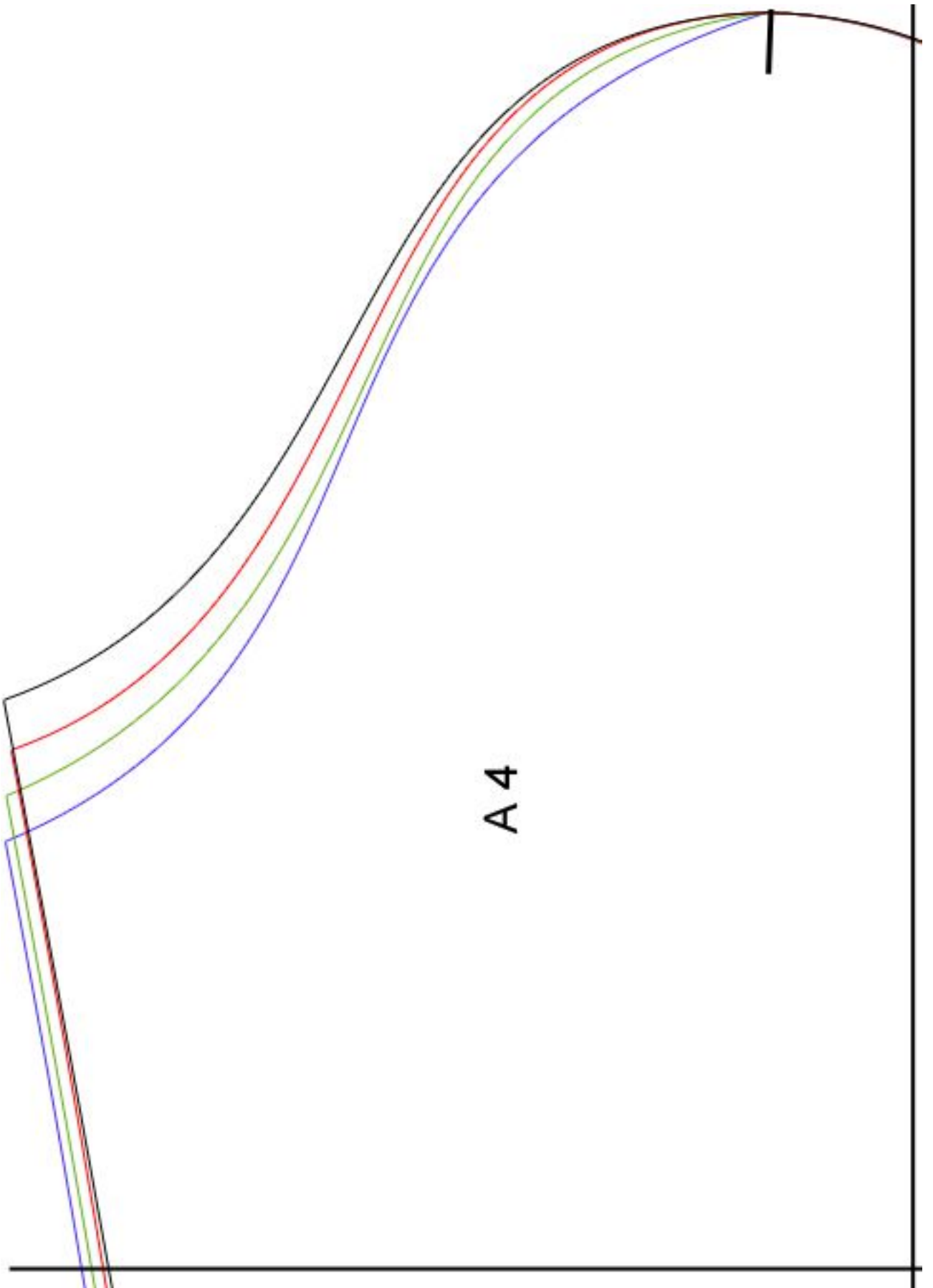




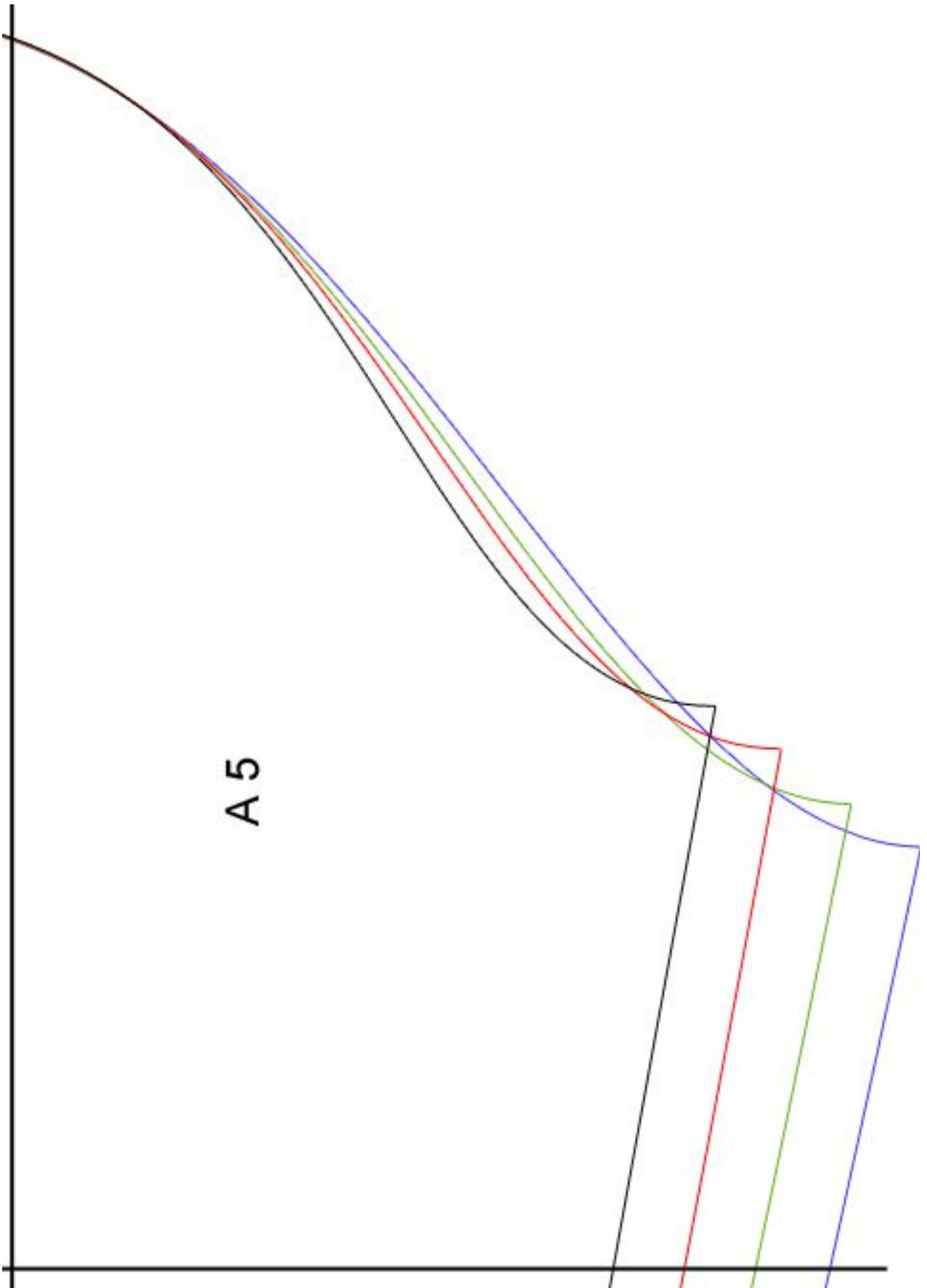


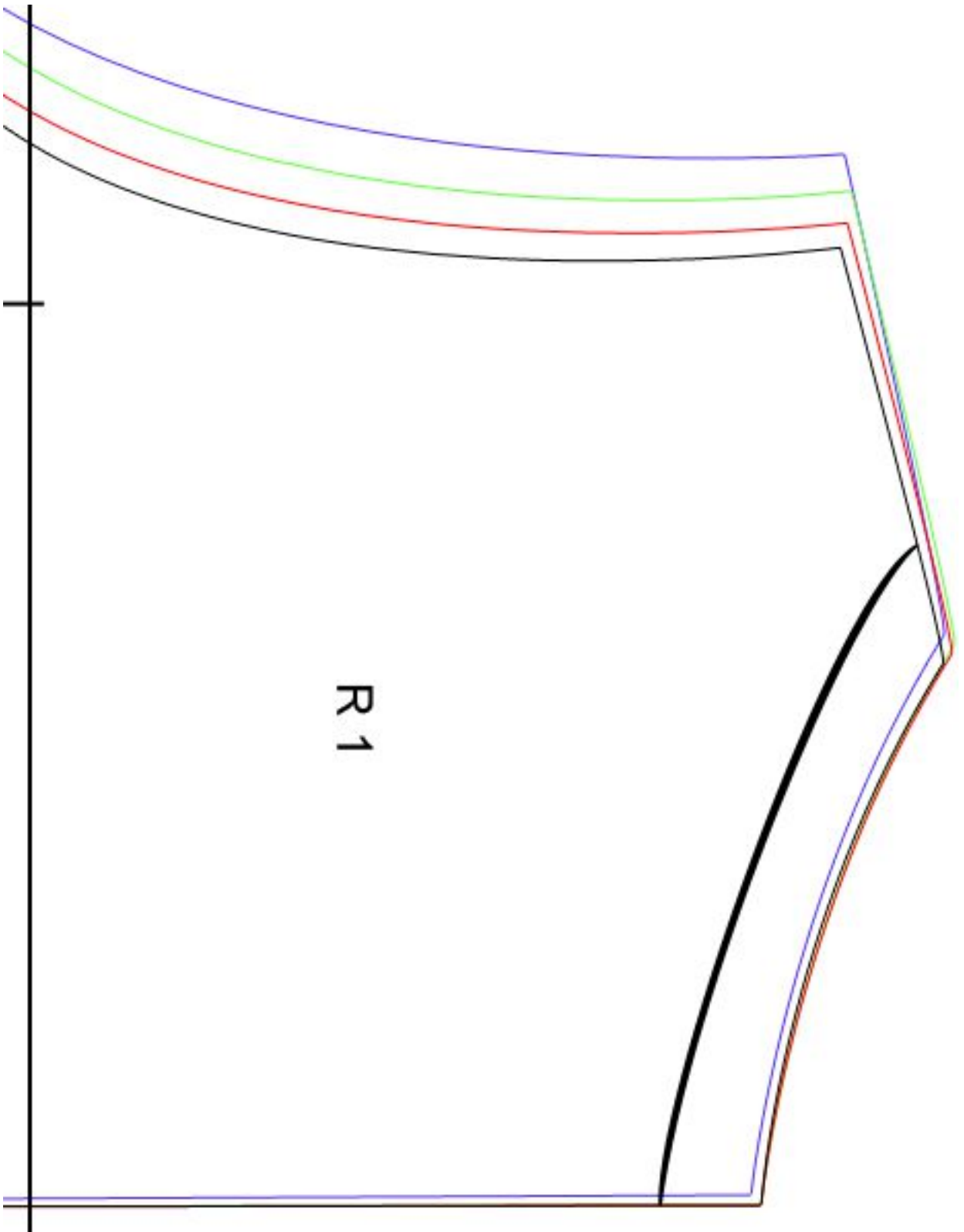


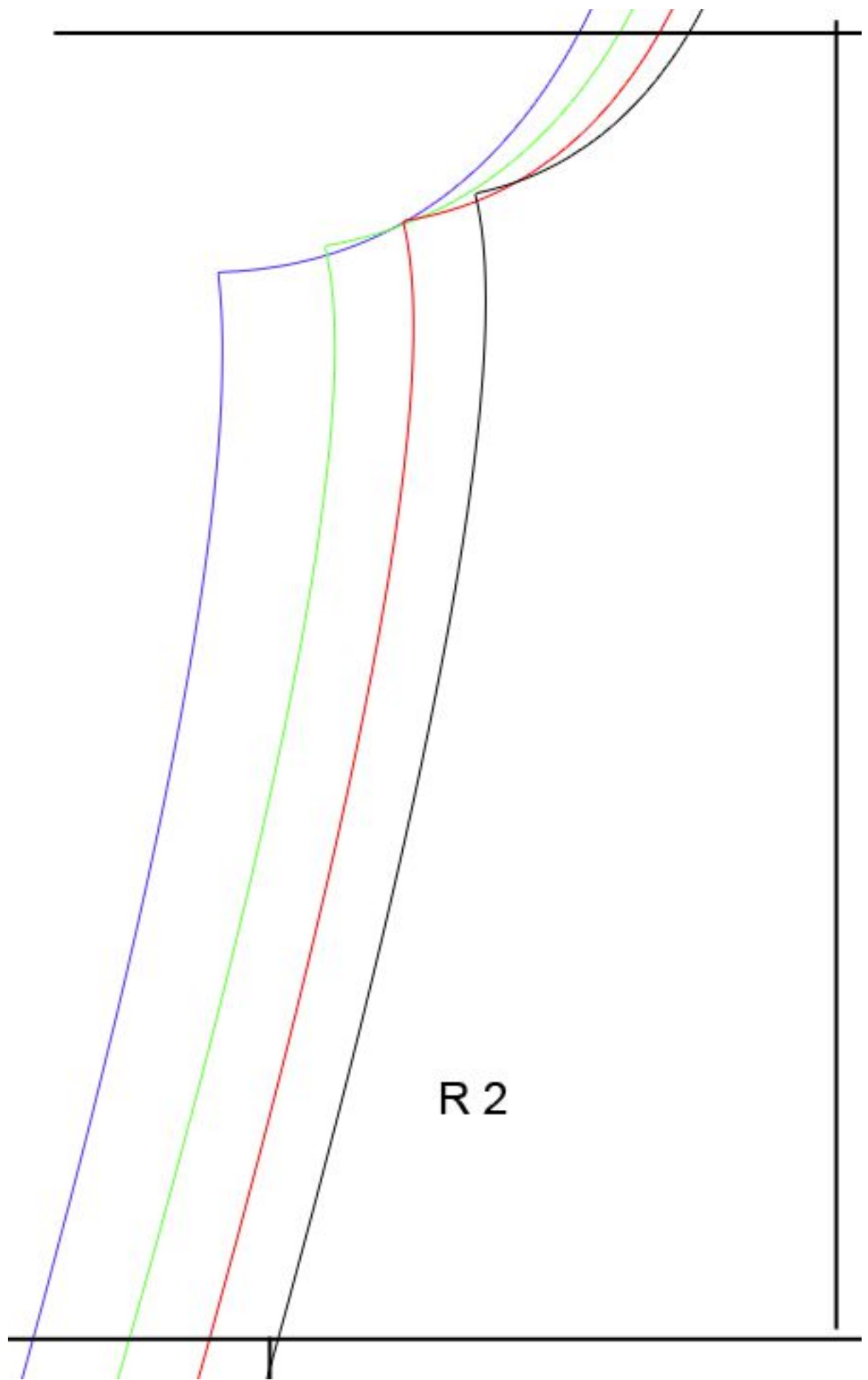
A 3



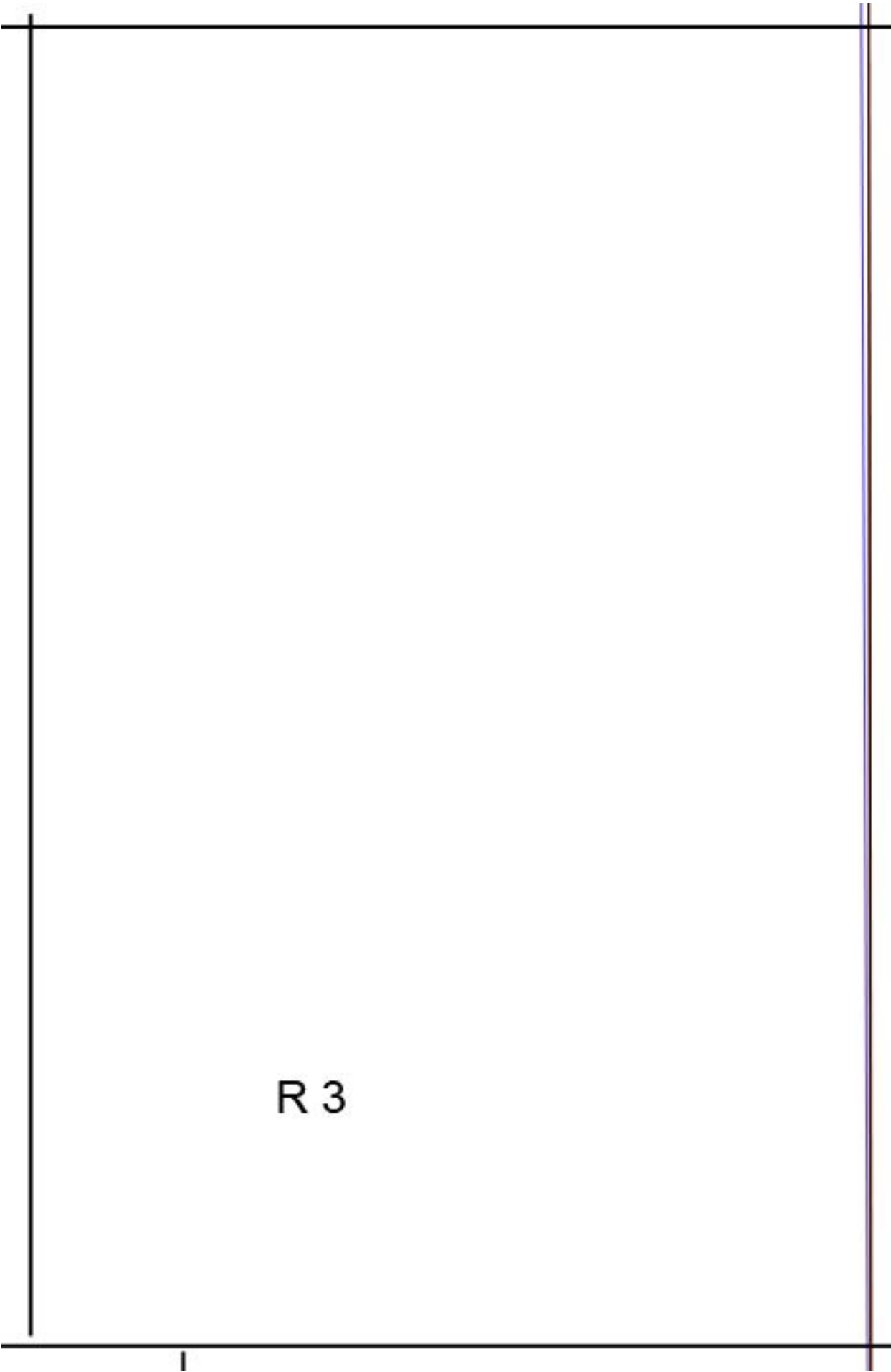
A 4

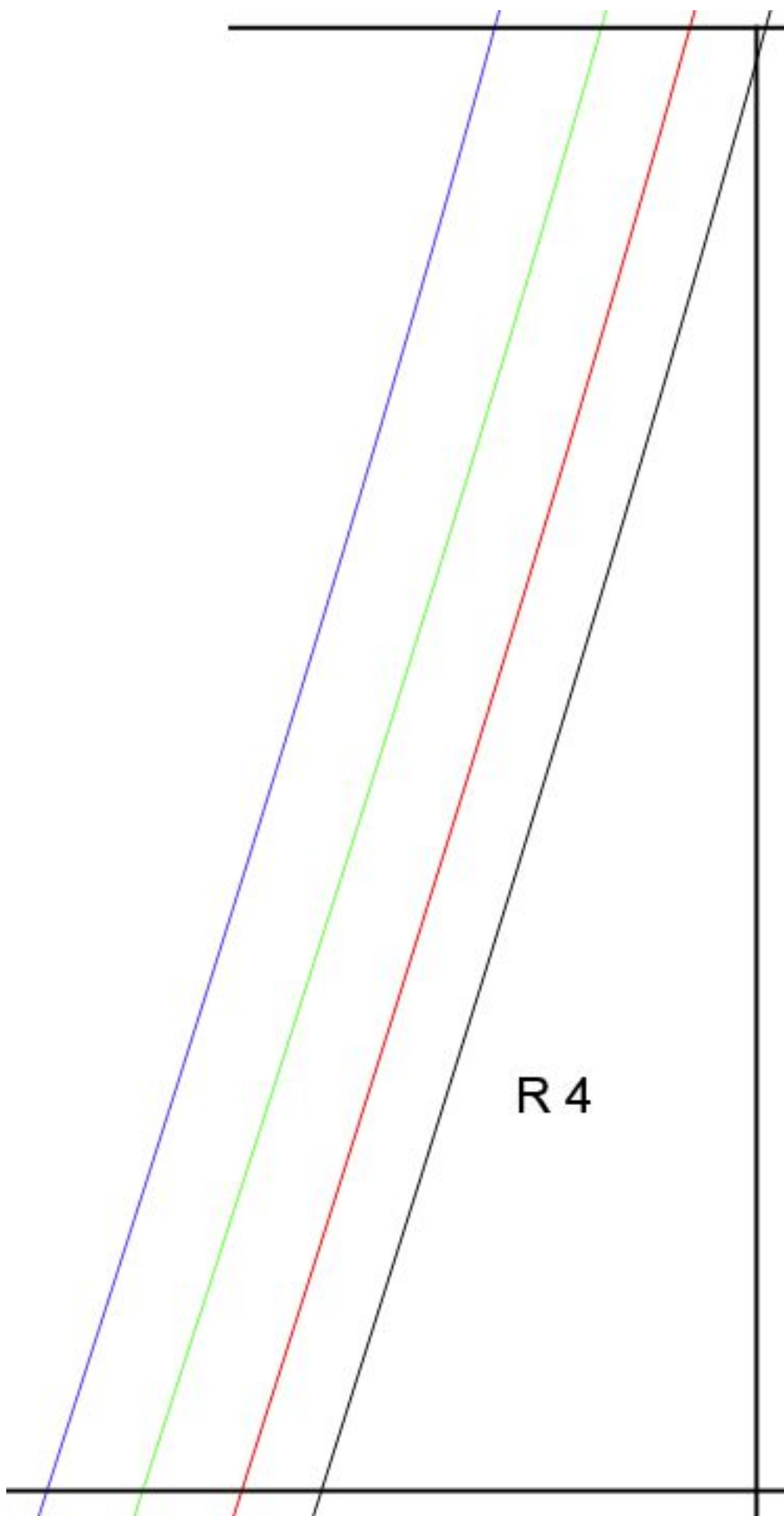


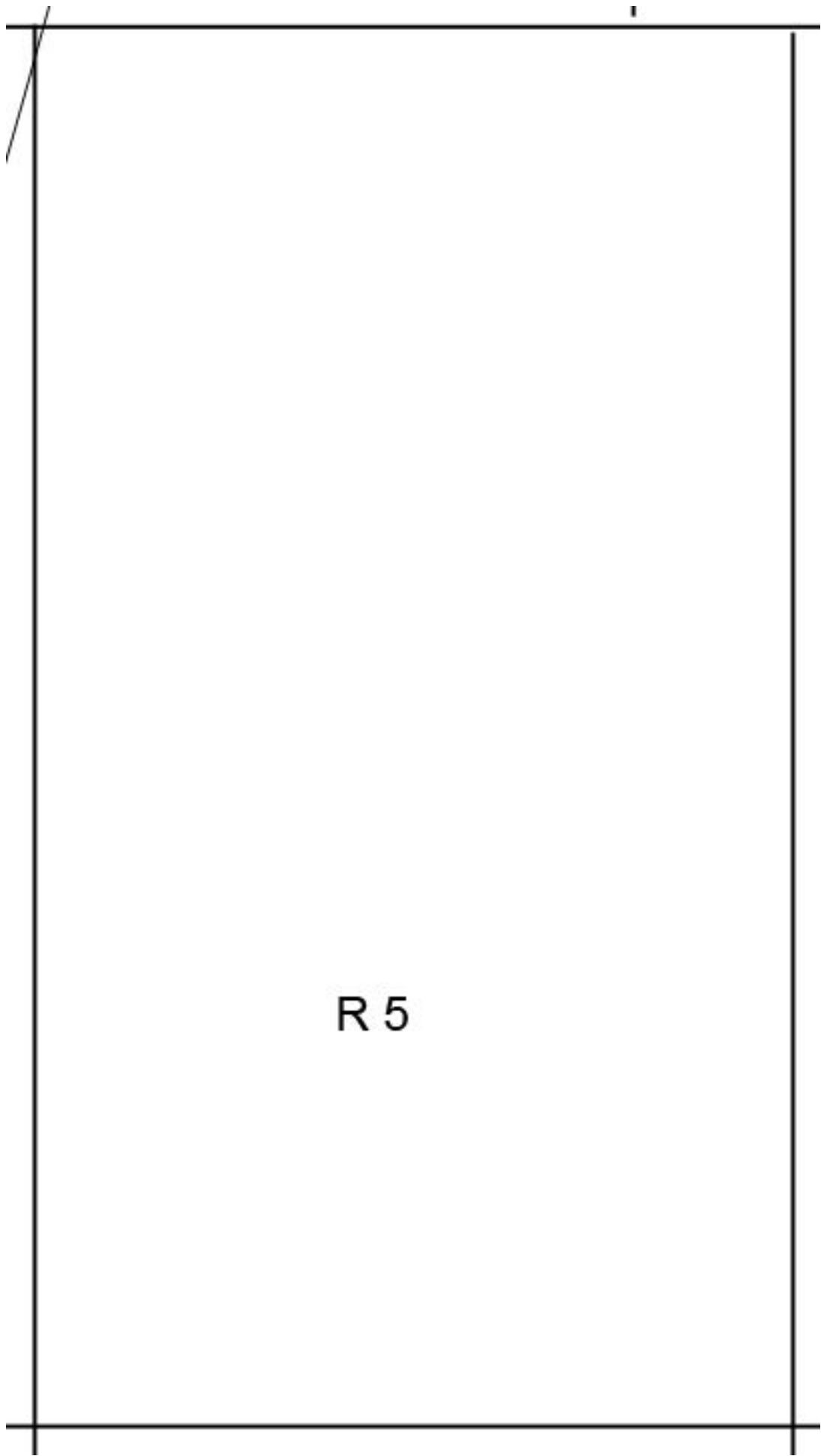


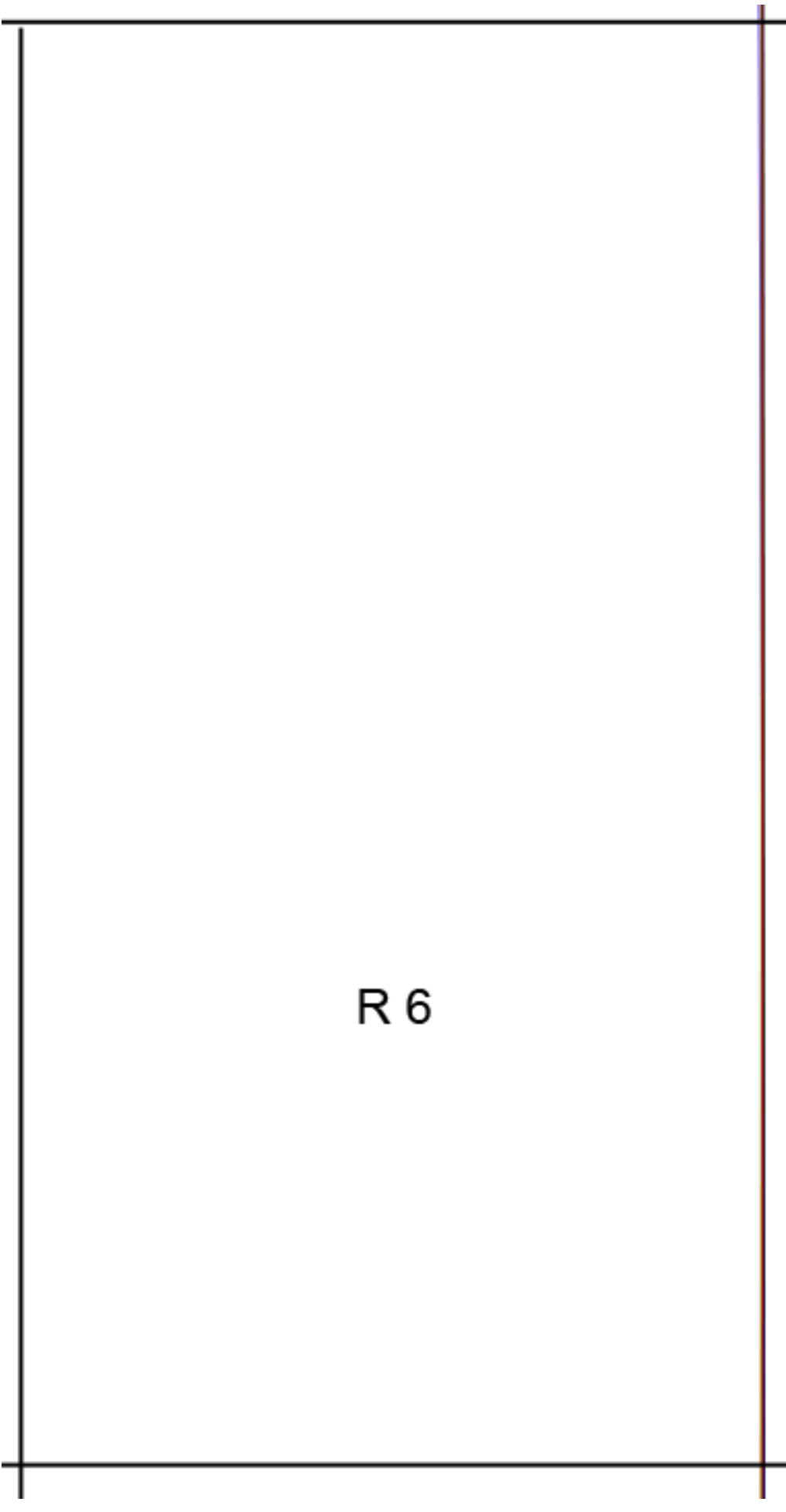




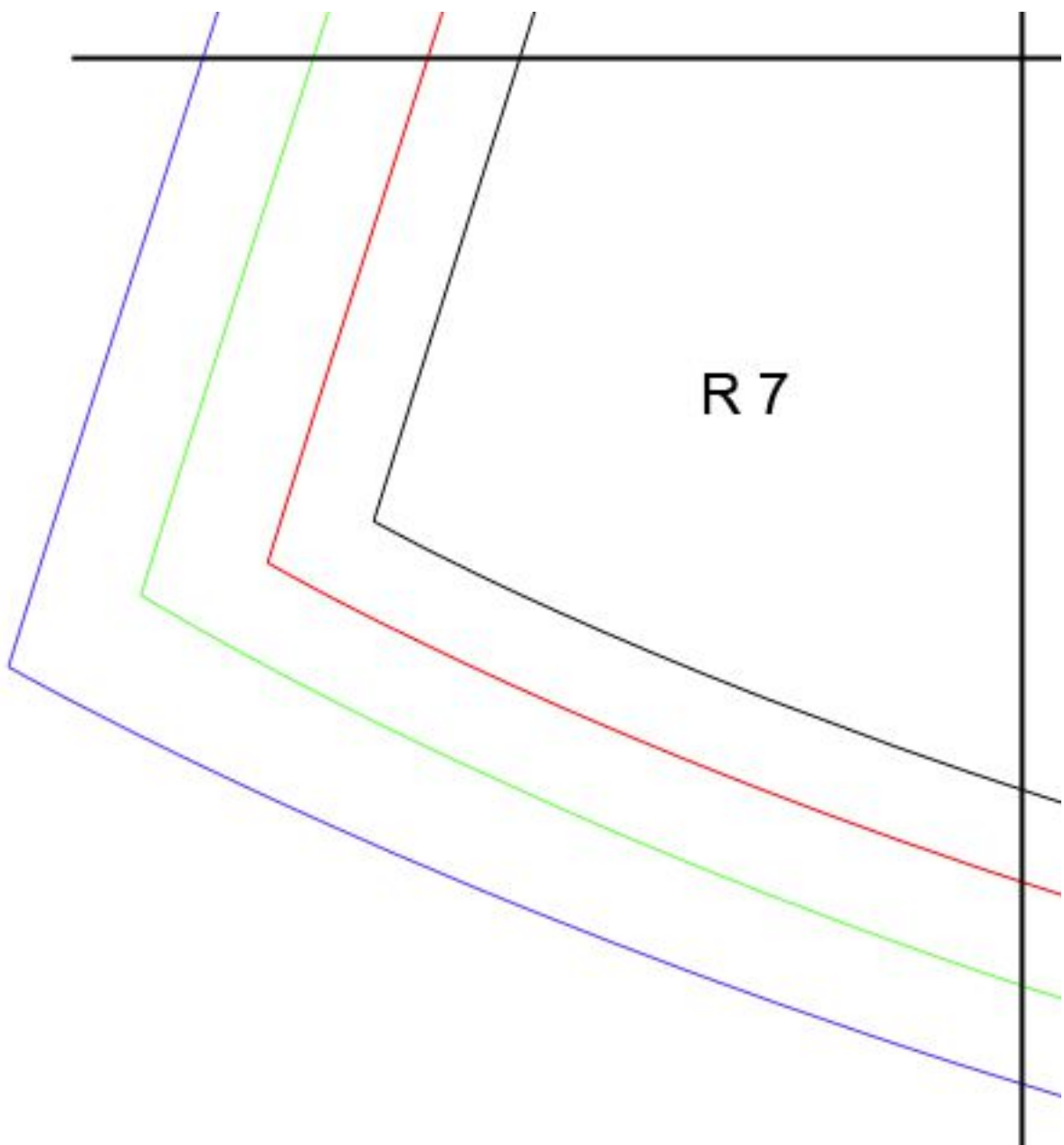




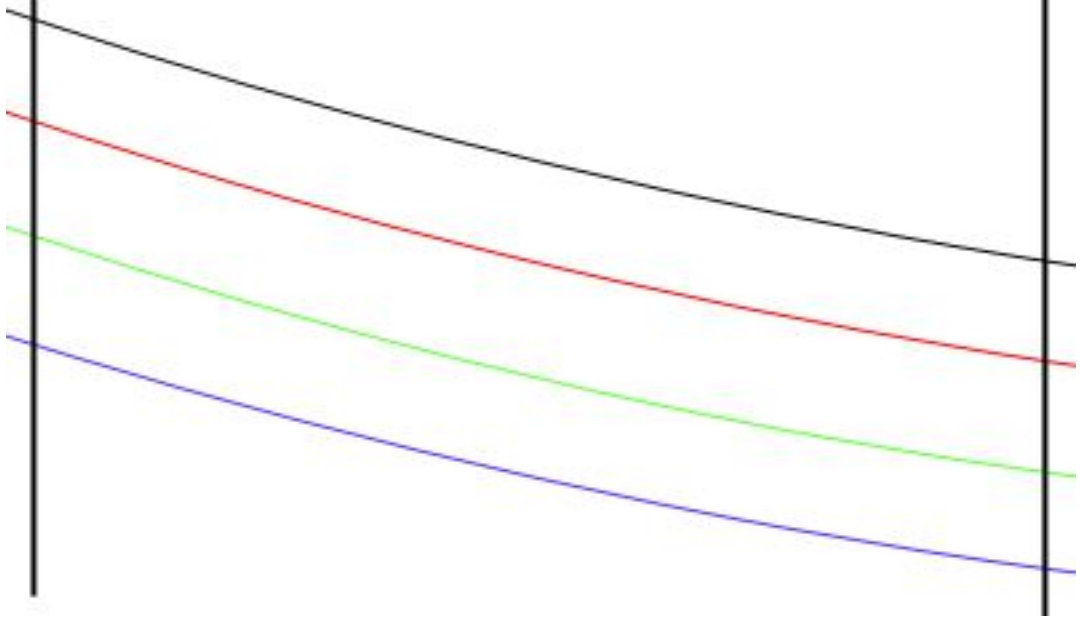




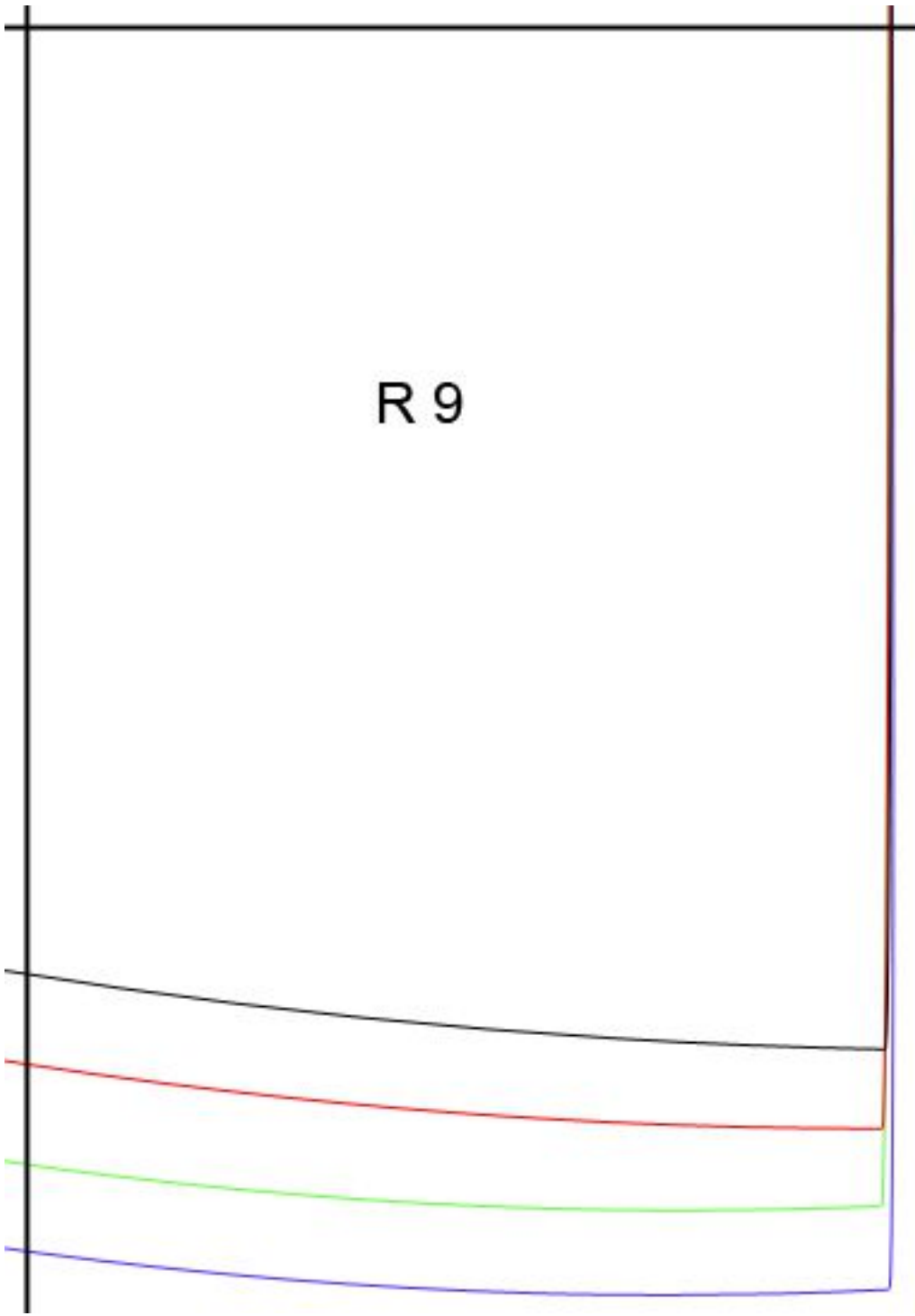
R 6

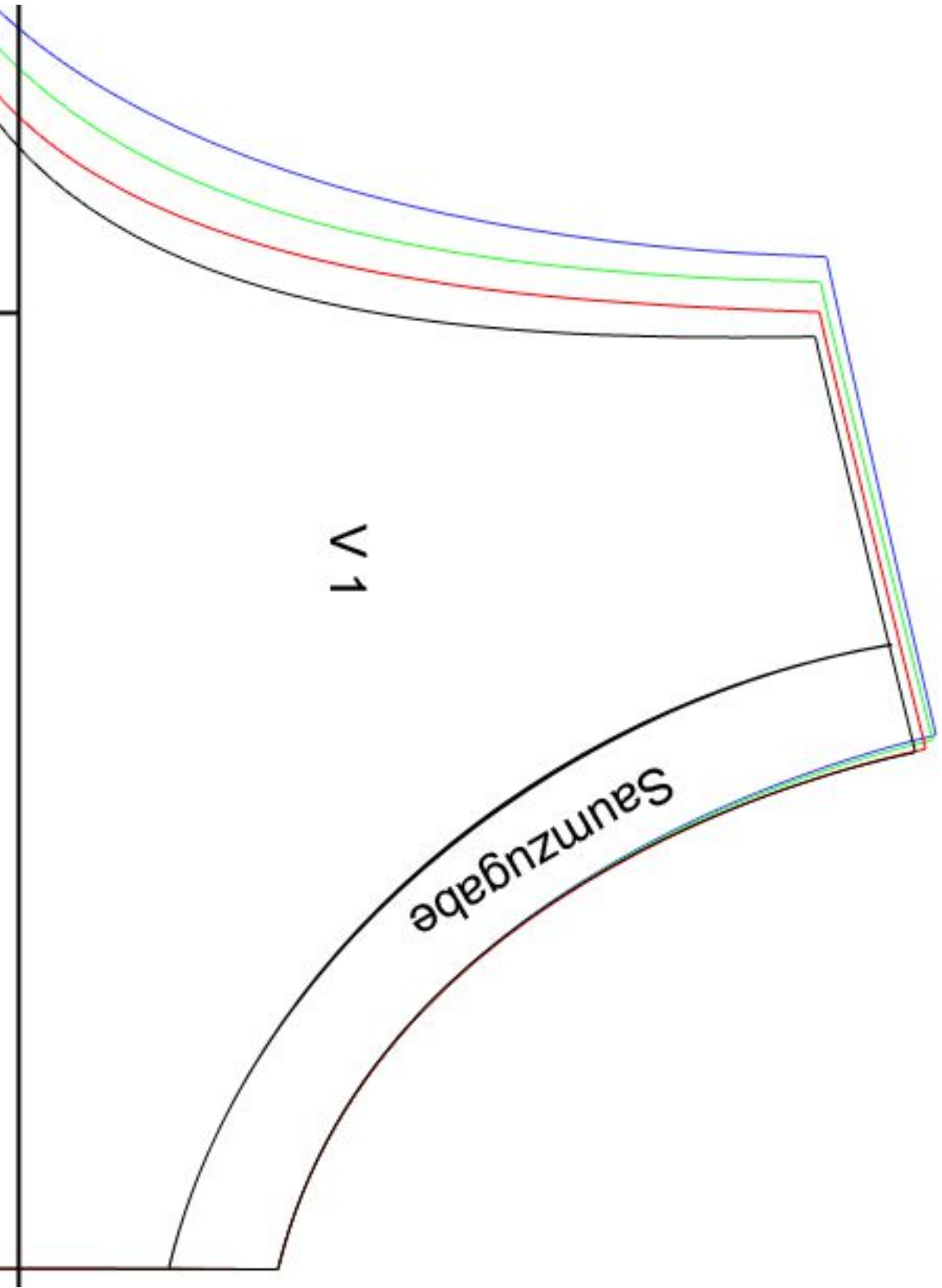


R 8

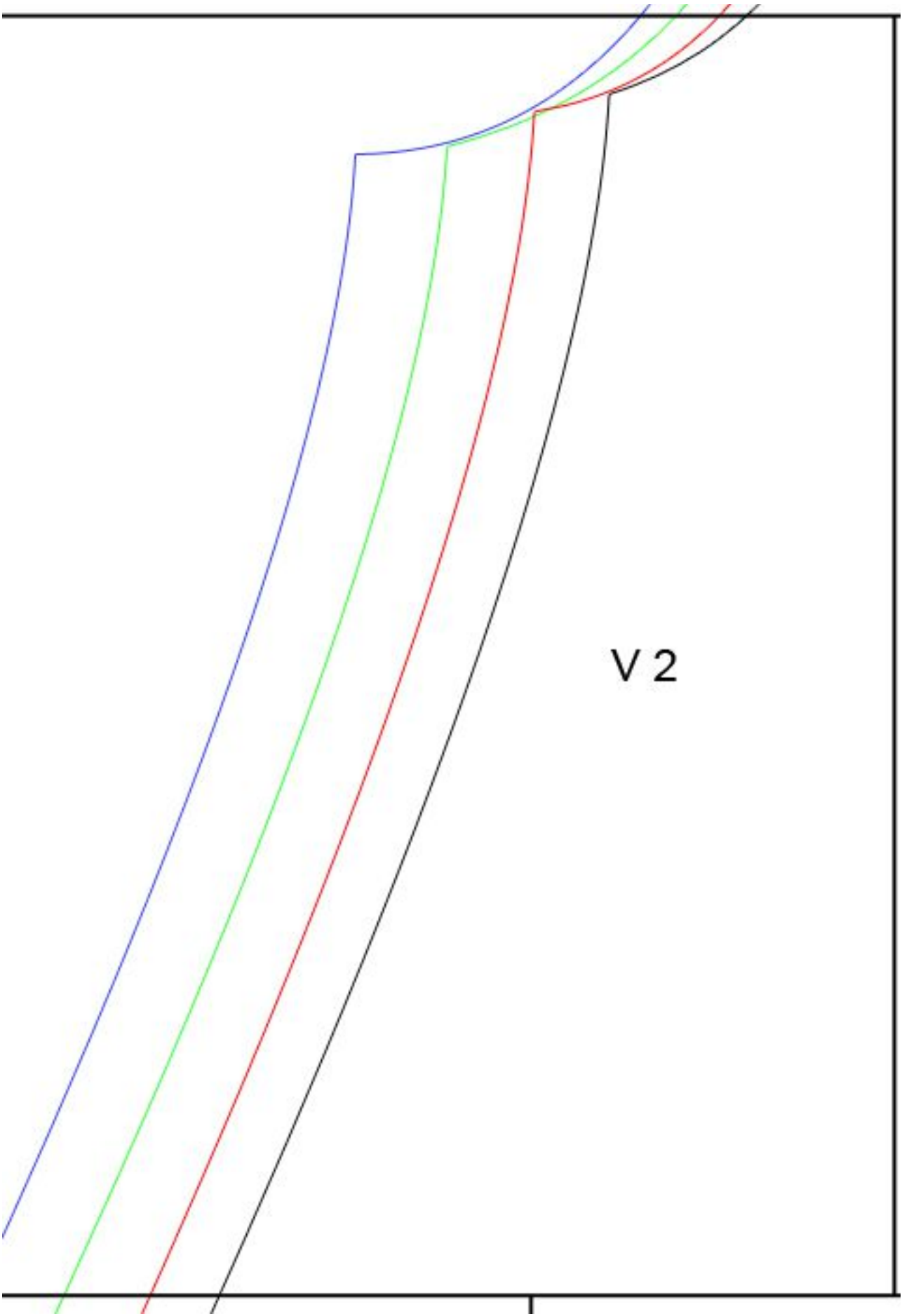


R 9





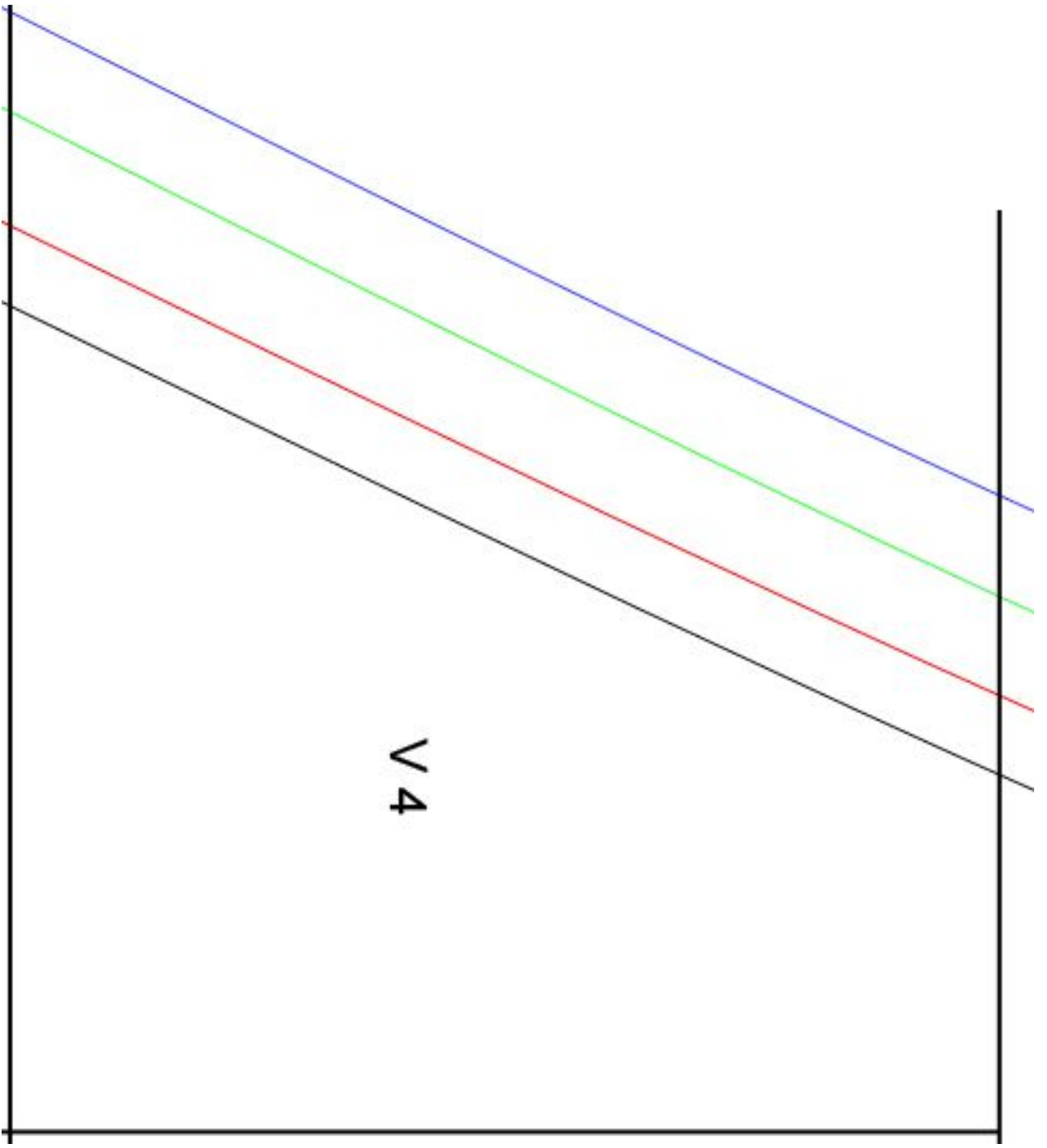




V 2

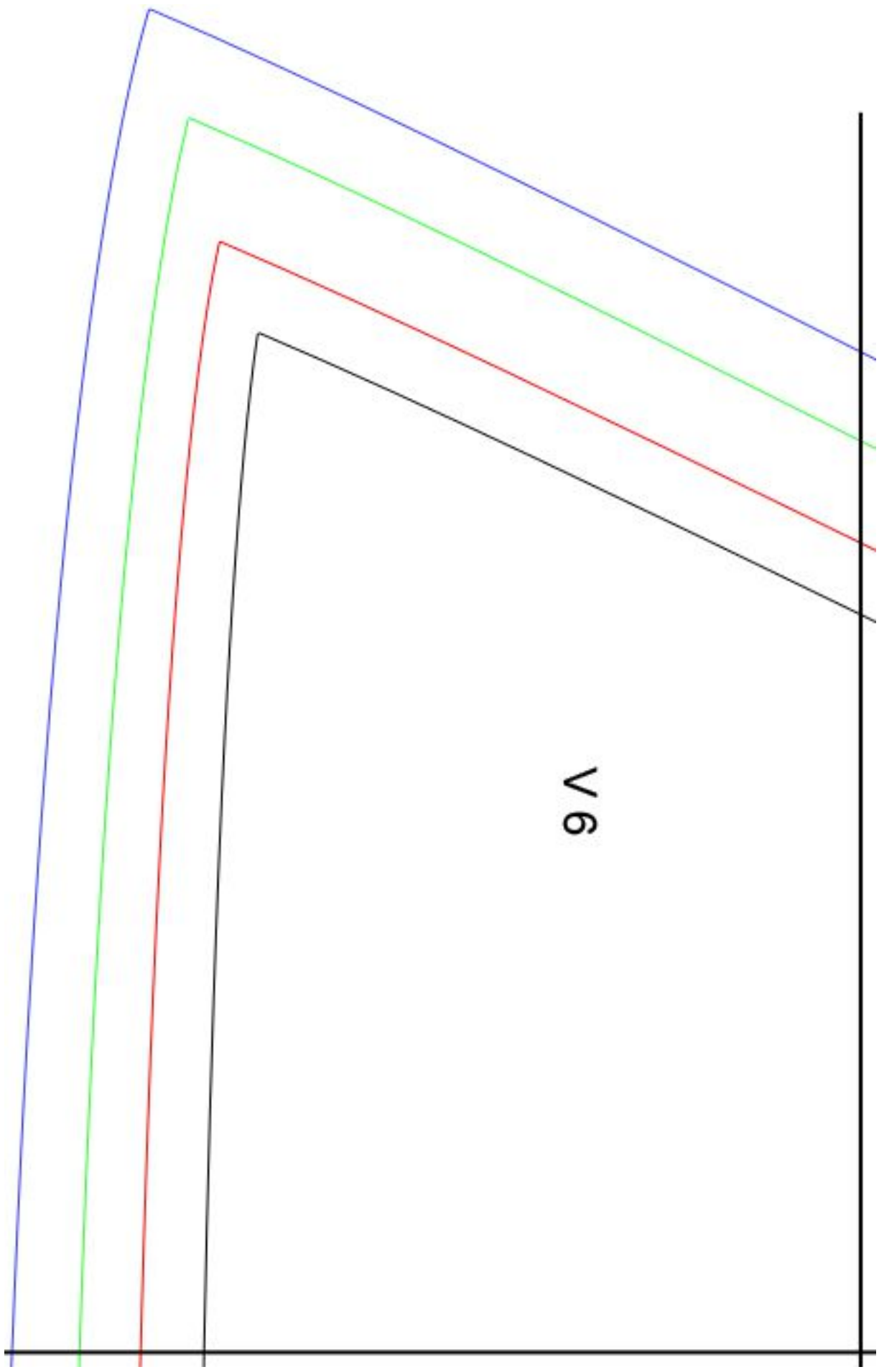
Vorderteil

V 3



V 4

V5



V6

V7

